

# CD11b Monoclonal Antibody (ICRF44), FITC, eBioscience™

## Product Details

Size	100 Tests
Species Reactivity	Baboon, Chimpanzee, Cynomolgus monkey, Human, Rhesus monkey
Published Species	Rat, Mouse, Human
Host/Isotype	Mouse / IgG1, kappa
Recommended Isotype Control	Mouse IgG1 kappa Isotype Control (P3.6.2.8.1), FITC, eBioscience™
Class	Monoclonal
Type	Antibody
Clone	ICRF44
Conjugate	FITC
Excitation/Emission Max	498/517 nm
Form	Liquid
Concentration	5 µL/Test
Purification	Affinity chromatography
Storage buffer	PBS, pH 7.2, with 0.2% BSA
Contains	0.09% sodium azide
Storage conditions	4° C, store in dark, DO NOT FREEZE!
RRID	AB_1582242

Applications	Tested Dilution	Publications
Western Blot (WB)	-	2 Publications
Immunohistochemistry (Paraffin) (IHC (P))	-	1 Publication
Immunocytochemistry (ICC/IF)	-	1 Publication
Flow Cytometry (Flow)	5 µL (0.5 µg)/test	50 Publications

## Product Specific Information

**Description:** The ICRF44 monoclonal antibody reacts with human CD11b, a 165 kDa adhesion molecule. CD11b associated with integrin beta2 (CD18) is expressed on the surface of monocytes, granulocytes, activated lymphocytes and a subset of NK cells. CD11b is a receptor for intercellular adhesion molecule family members CD54, CD102 and CD50 as well as for iC3b. These adhesions are crucial in cell-cell and cell-matrix interactions.

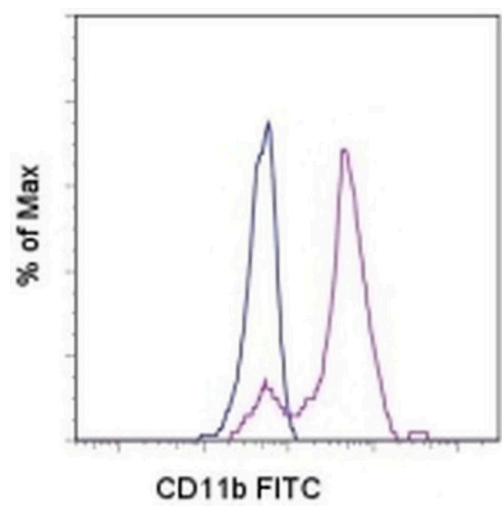
**Applications Reported:** This ICRF44 antibody has been reported for use in flow cytometric analysis.

**Applications Tested:** This ICRF44 antibody has been pre-titrated and tested by flow cytometric analysis of normal human peripheral blood cells. This can be used at 5 µL (0.5 µg) per test. A test is defined as the amount (µg) of antibody that will stain a cell sample in a final volume of 100 µL. Cell number should be determined empirically but can range from 10<sup>5</sup> to 10<sup>8</sup> cells /test.

**Excitation:** 488 nm; **Emission:** 520 nm; **Laser:** Blue Laser.

**Filtration:** 0.2 µm post-manufacturing filtered.

Product Images For CD11b Monoclonal Antibody (ICRF44), FITC, eBioscience™



**CD11b Antibody (11-0118-42) in Flow**  
Staining of normal human peripheral blood cells with Mouse IgG1 K Isotype Control FITC (Product # 11-4714-42) (blue histogram) or Anti-Human CD11b FITC (purple histogram).

View more figures on [thermofisher.cn](https://thermofisher.cn)

54 References

Western Blot (2)

Experimental hematology	Year 2015
<b>Induction of autophagy is a key component of all-trans-retinoic acid-induced differentiation in leukemia cells and a potential target for pharmacologic modulation.</b>	Species Human
"Published figure using CD11b monoclonal antibody (Product # 11-0118-42) in Flow Cytometry"	
Authors: Orfali N,O'Donovan TR,Nyhan MJ,Britschgi A,Tschan MP,Cahill MR,Mongan NP,Gudas LJ,McKenna SL	

Surgery	Year 2012
<b>Heparin-binding epidermal growth factor-like growth factor (HB-EGF) preserves gut barrier function by blocking neutrophil-endothelial cell adhesion after hemorrhagic shock and resuscitation in mice.</b>	
"Published figure using CD11b monoclonal antibody (Product # 11-0118-42) in Flow Cytometry"	
Authors: Zhang HY,James I,Chen CL,Besner GE	

Immunohistochemistry (Paraffin) (1)

Frontiers in cell and developmental biology	Year 2022
<b>Post-amputation reactive oxygen species production is necessary for axolotls limb regeneration.</b>	
"Published figure using CD11b monoclonal antibody (Product # 11-0118-42) in Immunohistochemistry (Paraffin)"	
Authors: Carbonell-M B,Zapata Cardona J,Delgado JP	

Immunocytochemistry (1)

Normal human monocytes exposed to glioma cells acquire myeloid-derived suppressor cell-like properties.

"11-0118 was used in Immunofluorescence to investigate whether glioblastoma exposure causes normal monocytes to assume an myeloid-derived suppressor cell-like phenotype."

Authors: Rodrigues JC,Gonzalez GC,Zhang L,Ibrahim G,Kelly JJ,Gustafson MP,Lin Y,Dietz AB,Forsyth PA,Yong VW, Parney IF

More applications with references on thermofisher.cn

Flow (50)

For Research Use Only. Not for use in diagnostic procedures. Not for resale without express authorization. Products are warranted to operate or perform substantially in conformance with published Product specifications in effect at the time of sale, as set forth in the Production documentation, specifications and/or accompanying package inserts ("Documentation"). No claim of suitability for use in applications regulated by FDA is made. The warranty provided herein is valid only when used by properly trained individuals. Unless otherwise stated in the Documentation, this warranty is limited to one year from date of shipment when the Product is subjected to normal, proper and intended usage. This warranty does not extend to anyone other than the Buyer. Any model or sample furnished to Buyer is merely illustrative of the general type and quality of goods and does not represent that any Product will conform to such model or sample. NO OTHER WARRANTIES, EXPRESS OR IMPLIED, ARE GRANTED INCLUDING WITHOUT LIMITATION, IMPLIED WARRANTIES OF MERCHANTABILITY, FITNESS FOR ANY PARTICULAR PURPOSE, OR NON INFRINGEMENT. BUYER'S EXCLUSIVE REMEDY FOR NON-CONFORMING PRODUCTS DURING THE WARRANTY PERIOD IS LIMITED TO REPAIR, REPLACEMENT OF OR REFUND FOR THE NON-CONFORMING PRODUCT(S) AT SELLER'S SOLE OPTION. THERE IS NO OBLIGATION TO REPAIR, REPLACE OR REFUND FOR PRODUCTS AS THE RESULT OF (I) ACCIDENT, DISASTER OR EVENT OF FORCE MAJEURE, (II) MISUSE, FAULT OR NEGLIGENCE OF OR BY BUYER, (III) USE OF THE PRODUCTS IN A MANNER FOR WHICH THEY WERE NOT DESIGNED, OR (IV) IMPROPER STORAGE AND HANDLING OF THE PRODUCTS. Unless otherwise expressly stated on the Product or in the documentation accompanying the Product, the Product is intended for research only and is not to be used for any other purpose, including without limitation, unauthorized commercial uses, in vitro diagnostic uses, ex vivo or in vivo therapeutic uses, or any type of consumption by or application to human or animals.