

DLL1 (delta-like 1) Monoclonal Antibody (HMD1-5), PE, eBioscience™

Product Details	
Size	25 µg
Species Reactivity	Mouse
Published Species	Human
Host/Isotype	Armenian hamster / IgG
Recommended Isotype Control	Armenian Hamster IgG Isotype Control (eBio299Arm), PE, eBioscience™
Class	Monoclonal
Type	Antibody
Clone	HMD1-5
Conjugate	PE
Excitation/Emission Max	565/576 nm
Form	Liquid
Concentration	0.2 mg/mL
Purification	Affinity chromatography
Storage buffer	PBS, pH 7.2
Contains	0.09% sodium azide
Storage conditions	4° C, store in dark, DO NOT FREEZE!
RRID	AB_1724119

Applications	Tested Dilution	Publications
Flow Cytometry (Flow)	0.25 µg/test	1 Publication

Product Specific Information

Description: The HMD1-5 monoclonal antibody reacts with mouse Delta-like 1, one of five type I transmembrane proteins that serves as a Notch receptor ligand. Upon binding the Notch receptor (e.g. Notch 1-4), Delta-like 1 undergoes proteolytic cleavage, first by ADAM-family metalloproteases and then by gamma-secretase. The second cleavage event releases an intracellular fragment whose biological function remains controversial. Delta-like 1 is expressed by thymic stromal cells, as well as on macrophages, dendritic cells, and stromal cells in the spleen. This protein is also expressed in nonhematopoietic tissues such as the lung and brain. Delta-like 1 has been linked to B cell development and differentiation, especially marginal zone and plasma cells, regulation of splenic dendritic cells, and leukemogenesis.

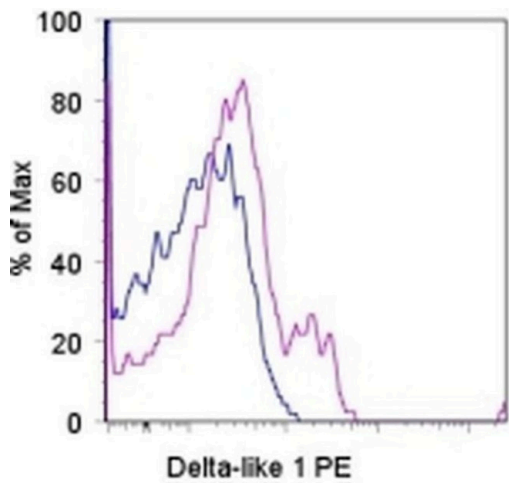
Applications Reported: This HMD1-5 antibody has been reported for use in flow cytometric analysis.

Applications Tested: This HMD1-5 antibody has been tested by flow cytometric analysis of mouse splenocytes and transfected cells. This can be used at less than or equal to 0.25 µg per test. A test is defined as the amount (µg) of antibody that will stain a cell sample in a final volume of 100 µL. Cell number should be determined empirically but can range from 10⁵ to 10⁸ cells /test. It is recommended that the antibody be carefully titrated for optimal performance in the assay of interest.

Excitation: 488-561 nm; **Emission:** 578 nm; **Laser:** Blue Laser, Green Laser, Yellow-Green Laser.

Filtration: 0.2 µm post-manufacturing filtered.

Product Images For DLL1 (delta-like 1) Monoclonal Antibody (HMD1-5), PE, eBioscience™



DLL1 (delta-like 1) Antibody (12-5767-80) in Flow
Staining of CD8+CD11c+ C57BL/6 splenocytes with 0.125 µg of Armenian Hamster IgG Isotype Control PE (Product # 12-4888-81) (blue histogram) or 0.125 µg of Anti-Mouse DLL1 (delta-like 1) PE (purple histogram). Total viable cells were used for analysis.

1 Reference

Flow Cytometry (1)

Haematologica	Year 2021
Whole Exome Sequencing reveals NOTCH1 mutations in anaplastic large cell lymphoma and points to Notch both as a key pathway and a potential therapeutic target.	Species Human
"12-5767-80 was used in Flow Cytometry to identify a variant in the extracellular domain of NOTCH1 that provides a growth advantage to cells and confirm the suitability of the Notch pathway as a second-line druggable target in Anaplastic Lymphoma Kinase and Anaplastic Large Cell Lymphoma, using Whole-Exome Sequencing."	Dilution 0.2 µg
Authors: Larose H, Prokoph N, Matthews JD, Schleiderer M, Högler S, Alsulami AF, Ducray SP, Nuglozeh E, Fazaludeen FMS, Elmouna A, Ceccon M, Mologni L, Gambacorti-Passerini C, Hoeffler G, Lobello C, Pospisilova S, Janikova A, Woessmann W, Damm-Welk C, Zimmermann M, Federova A, Malone A, Smith O, Wasik M, Inghirami G, Lamant L, Blundell TL, Klapper W, Merkel O, Burke AGA, Mian S, Ashankyty I, Kenner L, Turner SD	

For Research Use Only. Not for use in diagnostic procedures. Not for resale without express authorization. Products are warranted to operate or perform substantially in conformance with published Product specifications in effect at the time of sale, as set forth in the Production documentation, specifications and/or accompanying package inserts ("Documentation"). No claim of suitability for use in applications regulated by FDA is made. The warranty provided herein is valid only when used by properly trained individuals. Unless otherwise stated in the Documentation, this warranty is limited to one year from date of shipment when the Product is subjected to normal, proper and intended usage. This warranty does not extend to anyone other than the Buyer. Any model or sample furnished to Buyer is merely illustrative of the general type and quality of goods and does not represent that any Product will conform to such model or sample. NO OTHER WARRANTIES, EXPRESS OR IMPLIED, ARE GRANTED INCLUDING WITHOUT LIMITATION, IMPLIED WARRANTIES OF MERCHANTABILITY, FITNESS FOR ANY PARTICULAR PURPOSE, OR NON INFRINGEMENT. BUYER'S EXCLUSIVE REMEDY FOR NON-CONFORMING PRODUCTS DURING THE WARRANTY PERIOD IS LIMITED TO REPAIR, REPLACEMENT OF OR REFUND FOR THE NON-CONFORMING PRODUCT(S) AT SELLER'S SOLE OPTION. THERE IS NO OBLIGATION TO REPAIR, REPLACE OR REFUND FOR PRODUCTS AS THE RESULT OF (i) ACCIDENT, DISASTER OR EVENT OF FORCE MAJEURE, (ii) MISUSE, FAULT OR NEGLIGENCE OF OR BY BUYER, (iii) USE OF THE PRODUCTS IN A MANNER FOR WHICH THEY WERE NOT DESIGNED, OR (iv) IMPROPER STORAGE AND HANDLING OF THE PRODUCTS. Unless otherwise expressly stated on the Product or in the documentation accompanying the Product, the Product is intended for research only and is not to be used for any other purpose, including without limitation, unauthorized commercial uses, in vitro diagnostic uses, ex vivo or in vivo therapeutic uses, or any type of consumption by or application to human or animals.