

# Rat IgG2a kappa Isotype Control (eBR2a), Biotin, eBioscience™

## Product Details

|                    |                                     |
|--------------------|-------------------------------------|
| Size               | 100 µg                              |
| Host/Isotype       | Rat / IgG2a, kappa                  |
| Class              | Monoclonal                          |
| Type               | Isotype Control                     |
| Clone              | eBR2a                               |
| Conjugate          | Biotin                              |
| Form               | Liquid                              |
| Concentration      | 0.5 mg/mL                           |
| Purification       | Affinity chromatography             |
| Storage buffer     | PBS, pH 7.2                         |
| Contains           | 0.09% sodium azide                  |
| Storage conditions | 4° C, store in dark, DO NOT FREEZE! |
| RRID               | AB_470084                           |

| Applications                              | Tested Dilution | Publications  |
|---|-----------------|---------------|
| Immunohistochemistry (Paraffin) (IHC (P)) | Assay-dependent | -             |
| Immunocytochemistry (ICC/IF)              | 5 µg/mL         | -             |
| Flow Cytometry (Flow)                     | Assay-Dependent | 0 Publication |
| Functional Assay (FN)                     | -               | 0 Publication |
| Control (Ctrl)                            | Assay-Dependent | -             |

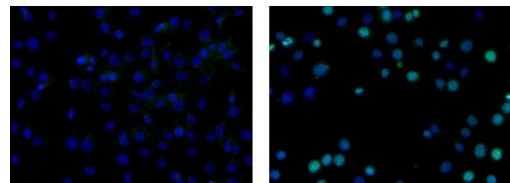
## Product Specific Information

**Description:** The monoclonal rat IgG2a, kappa is useful as an isotype control immunoglobulin.

**Applications Reported:** This rat IgG2a isotype control has been reported for use in immunocytochemistry, immunohistochemistry, flow cytometric analysis, and ELISA.

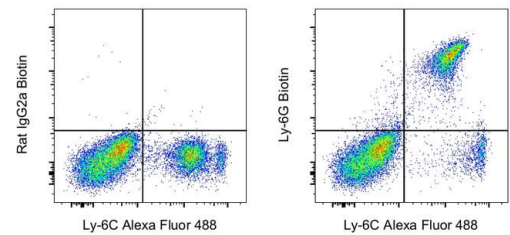
**Applications Tested:** This rat IgG2a isotype control has been used by flow cytometric analysis of mouse splenocyte suspension and should be used at the same concentration as the experimental antibody.

**Filtration:** 0.2 µm post-manufacturing filtered.



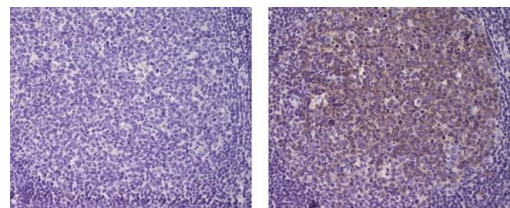
**Rat IgG2a kappa Isotype Control (13-4321-82) in ICC/IF**

Immunocytochemistry of fixed and permeabilized C2C12 cells stained with 5 µg/mL of Rat IgG2a K Isotype Control Biotin (left) or 5 µg/mL of Anti-Mouse/Rat Ki-67 Biotin (right) followed by Streptavidin FITC. Nuclei are stained with DAPI, colocalization of signal with DAPI appears aqua.



**Rat IgG2a kappa Isotype Control (13-4321-82) in Flow**

BALB/c mouse bone marrow cells were stained with Ly-6C Monoclonal Antibody, Alexa Fluor 488 (Product # 53-5932-82), and 0.125 µg of Rat IgG2a kappa Isotype Control, Biotin (Product # 13-4321-85) (left) or 0.125 µg of Ly-6G Monoclonal Antibody, Biotin (right) followed by Streptavidin, PE (Product # 12-4317-87). All cells were used for analysis.



**Rat IgG2a kappa Isotype Control (13-4321-82) in IHC (P)**

Immunohistochemistry of formalin-fixed paraffin embedded human tonsil tissue using low pH antigen retrieval and stained with 20 µg/mL Rat IgG2a K Isotype Control Biotin (left) or 20 µg/mL Anti-Human/Mouse Activation-Induced Cytidine Deaminase (AID) Biotin (right) followed by Avidin HRP and DAB visualization. Nuclei are counterstained with hematoxylin.

[View more figures on thermofisher.cn](https://thermofisher.cn)

16 References

Therapeutic potential of FLT4-targeting peptide in acute myeloid leukemia. Cancer Immunol Immunother (2023)

Therapeutic potential of FLT4-targeting peptide in acute myeloid leukemia Research Square (2022)

New insights into the phosphorylation of the threonine motif of the 1 integrin cytoplasmic domain. Life Sci Alliance (2022)

Peptides Targeting Fms-Related Tyrosine Kinase-4 Activate the Function of Natural Killer Cells in Acute Myeloid Leukemia. Int J Stem Cells (2021)

Cytotoxic T cells swarm by homotypic chemokine signalling. Elife (2020)

For Research Use Only. Not for use in diagnostic procedures. Not for resale without express authorization. Products are warranted to operate or perform substantially in conformance with published Product specifications in effect at the time of sale, as set forth in the Production documentation, specifications and/or accompanying package inserts ("Documentation"). No claim of suitability for use in applications regulated by FDA is made. The warranty provided herein is valid only when used by properly trained individuals. Unless otherwise stated in the Documentation, this warranty is limited to one year from date of shipment when the Product is subjected to normal, proper and intended usage. This warranty does not extend to anyone other than the Buyer. Any model or sample furnished to Buyer is merely illustrative of the general type and quality of goods and does not represent that any Product will conform to such model or sample. NO OTHER WARRANTIES, EXPRESS OR IMPLIED, ARE GRANTED INCLUDING WITHOUT LIMITATION, IMPLIED WARRANTIES OF MERCHANTABILITY, FITNESS FOR ANY PARTICULAR PURPOSE, OR NON INFRINGEMENT. BUYER'S EXCLUSIVE REMEDY FOR NON-CONFORMING PRODUCTS DURING THE WARRANTY PERIOD IS LIMITED TO REPAIR, REPLACEMENT OF OR REFUND FOR THE NON-CONFORMING PRODUCT(S) AT SELLER'S SOLE OPTION. THERE IS NO OBLIGATION TO REPAIR, REPLACE OR REFUND FOR PRODUCTS AS THE RESULT OF (I) ACCIDENT, DISASTER OR EVENT OF FORCE MAJEURE, (II) MISUSE, FAULT OR NEGLIGENCE OF OR BY BUYER, (III) USE OF THE PRODUCTS IN A MANNER FOR WHICH THEY WERE NOT DESIGNED, OR (IV) IMPROPER STORAGE AND HANDLING OF THE PRODUCTS. Unless otherwise expressly stated on the Product or in the documentation accompanying the Product, the Product is intended for research only and is not to be used for any other purpose, including without limitation, unauthorized commercial uses, in vitro diagnostic uses, ex vivo or in vivo therapeutic uses, or any type of consumption by or application to human or animals.