

Bcl-2 Monoclonal Antibody (Bcl-2-100)

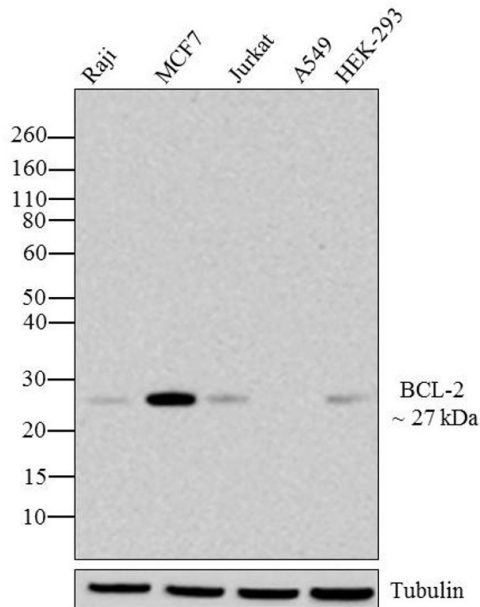
Product Details	
Size	100 µg
Species Reactivity	Human, Mouse
Published Species	Rat, Bacteria, Human, Chicken
Host/Isotype	Mouse / IgG1, kappa
Class	Monoclonal
Type	Antibody
Clone	Bcl-2-100
Conjugate	Unconjugated
Immunogen	Synthetic peptide corresponding to residues 41-54 of the human Bcl-2 protein. This sequence is not shared by the mouse Bcl-2 protein.
Form	Liquid
Concentration	0.5 mg/mL
Purification	Affinity chromatography
Storage buffer	PBS, pH 7.4
Contains	0.1% sodium azide
Storage conditions	-20°C
RRID	AB_2533042

Applications	Tested Dilution	Publications
Western Blot (WB)	0.5-1 µg/mL	29 Publications
Immunohistochemistry (IHC)	Assay-dependent	6 Publications
Immunohistochemistry (Paraffin) (IHC (P))	5 µg/mL	10 Publications
Immunocytochemistry (ICC/IF)	-	3 Publications
Flow Cytometry (Flow)	Assay-dependent	2 Publications
Immunoprecipitation (IP)	Assay-dependent	2 Publications
Miscellaneous PubMed (Misc)	-	9 Publications

Product Images For Bcl-2 Monoclonal Antibody (Bcl-2-100)

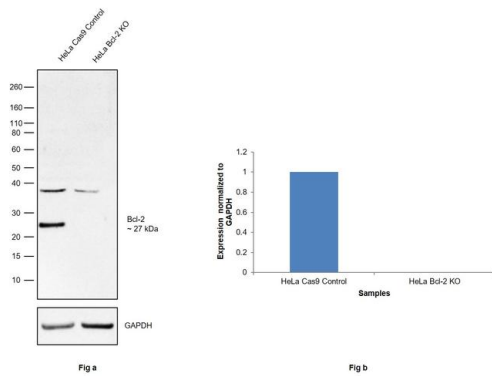
Bcl-2 Antibody (13-8800) in WB

Western blot analysis of BCL-2 was performed by loading 20 µg of Raji (lane1), MCF7 (lane2), Jurkat (lane3), A549 (lane4) and HEK-293 (lane5) cell lysates using Novex® NuPAGE® 4-12 % Bis-Tris gel (Product # NP0321BOX), XCell SureLock Electrophoresis System (Product # EI0002), Novex® Sharp Pre-Stained Protein Standard (Product # LC5800), and iBlot® Dry Blotting System (Product # IB21001). Proteins were transferred to a nitrocellulose membrane and blocked with 5 % skim milk for 1 hour at room temperature. BCL-2 was detected at ~27 kDa using BCL-2 Mouse Monoclonal Antibody (Product # 13-8800) at 1-3 µg/mL dilution in 2.5 % skim milk at 4°C overnight on a rocking platform. Goat anti-Mouse IgG - HRP Secondary Antibody (Product # G-21234) at 1:4000 dilution was used and chemiluminescent detection was performed using Pierce™ ECL Western blotting Substrate (Product # 32106).



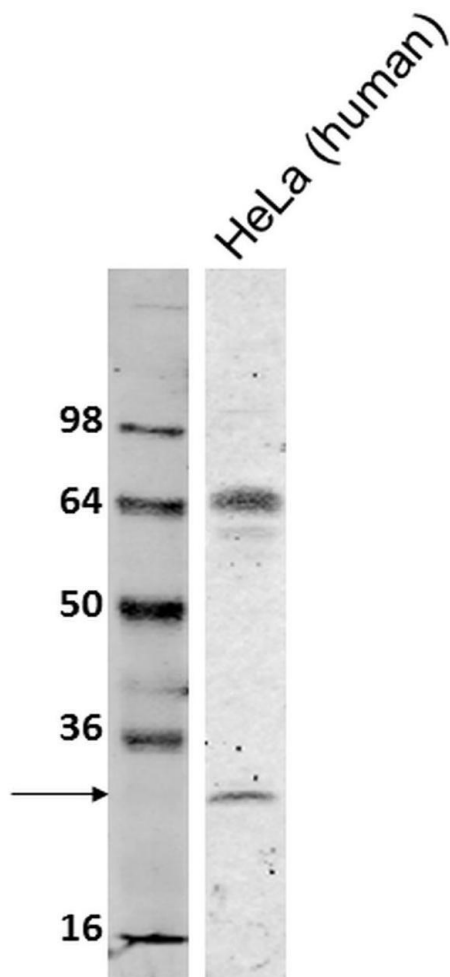
Bcl-2 Antibody (13-8800) in WB

Knockout of Bcl-2 was achieved by CRISPR-Cas9 genome editing using LentiArray™ Lentiviral sgRNA (Product # A32042, Assay ID) and LentiArray Cas9 Lentivirus (Product # A32064). Western blot analysis of Bcl-2 was performed by loading 30 µg of HeLa Cas9 (Lane 1) and HeLa Bcl-2 KO (Lane 2) whole cell extracts. The samples were electrophoresed using NuPAGE™ Novex™ 4-12% Bis-Tris Protein Gel (Product # NP0322BOX). Resolved proteins were then transferred onto a nitrocellulose membrane (Product # IB23001) by iBlot® 2 Dry Blotting System (Product # IB21001). The blot was probed with Anti-Bcl-2 Monoclonal Antibody (Bcl-2-100) (Product # 13-8800, 1:500 dilution) and Goat anti-Mouse IgG (H+L) Superclonal™ Recombinant Secondary Antibody, HRP (Product # A28177, 1:10,000 dilution) using the iBright FL 1000 (Product # A32752). Chemiluminescent detection was performed using Novex® ECL Chemiluminescent Substrate Reagent Kit (Product # WP20005). Loss of signal upon CRISPR mediated knockout (KO) using the LentiArray™ CRISPR product line confirms that antibody is specific to Bcl-2. An uncharacterized band was observed at ~38 kDa in both the samples.



Bcl-2 Antibody (13-8800) in WB

Western blot analysis of Bcl2 was performed by loading 2 μ L SeeBlue® Plus2 Prestained Protein Ladder (Product # LC5925) (lane 1) and 50 μ g HeLa (lane 2, HeLa (human) cell lysate onto a 10% Tris-Glycine polyacrylamide gel. Proteins were transferred to a nitrocellulose membrane and blocked with 1% BSA/TBST for at least 1 hour at room temperature. Bcl2 was detected using a monoclonal antibody (Product # 13-8800) at a concentration of 1 μ g/mL in blocking buffer overnight at 4°C on a rocking platform, followed by a goat anti-mouse IgG Alexa Fluor 680 secondary antibody (Product # A11357) at a dilution of 1:10,000 for at least 1 hour. Fluorescent detection was performed using the Odyssey® CLx imaging system (Li-cor Biosciences). Images generated by Joell Solan in Paul Lampe Lab at Fred Hutchinson Cancer Research Center.



[View more figures on thermofisher.cn](http://thermofisher.cn)

Western Blot (29)

<p>The Korean journal of physiology & pharmacology : official journal of the Korean Physiological Society and the Korean Society of Pharmacology</p> <p>Hsa_circ_0129047 sponges miR-665 to attenuate lung adenocarcinoma progression by upregulating protein tyrosine phosphatase receptor type B.</p> <p>"Published figure using Bcl-2 monoclonal antibody (Product # 13-8800) in Western Blot"</p> <p>Authors: Xia X,Fan J,Fan Z</p>	<p>Year</p> <p>2023</p>
<p>Translational oncology</p> <p>LINC01311 exerts an inhibitory effect in thyroid cancer progression by targeting the miR-146b-5p/IMPA2 axis.</p> <p>"Published figure using Bcl-2 monoclonal antibody (Product # 13-8800) in Western Blot"</p> <p>Authors: Liu M,Zhang L,Hu J,Yan C,Zhang Y,Yan Z</p>	<p>Year</p> <p>2023</p>

View more WB references on thermofisher.cn

Immunohistochemistry (6)

<p>Diagnostic pathology</p> <p>Primary sclerosing epithelioid fibrosarcoma of kidney with variant histomorphologic features: report of 2 cases and review of the literature.</p> <p>"13-8800 was used in immunohistochemistry to present two cases of primary sclerosing epithelioid fibrosarcoma of the kidney"</p> <p>Authors: Ertoy Baydar D,Kosemehmetoglu K,Aydin O,Bridge JA,Buyukeren B,Aki FT</p>	<p>Year</p> <p>2015</p> <p>Species</p> <p>Human</p> <p>Dilution</p> <p>1:80</p>
<p>Biometals : an international journal on the role of metal ions in biology, biochemistry, and medicine</p> <p>Cytoprotective mechanisms in rats lung parenchyma with zinc deprivation.</p> <p>"13-8800 was used in immunohistochemistry to study the effect of zinc deficiency on airway epithelium"</p> <p>Authors: Biaggio VS,Alvarez-Olmedo DG,Perez Chaca MV,Salveti NR,Valdez SR,Fanelli MA,Ortega HH,Gomez NN, Gimenez MS</p>	<p>Year</p> <p>2014</p> <p>Species</p> <p>Rat</p> <p>Dilution</p> <p>1:200</p>

View more IHC references on thermofisher.cn

More applications with references on thermofisher.cn

- IHC (P) (10)
- ICC/IF (3)
- Flow (2)
- IP (2)
- Misc (9)

For Research Use Only. Not for use in diagnostic procedures. Not for resale without express authorization. Products are warranted to operate or perform substantially in conformance with published Product specifications in effect at the time of sale, as set forth in the Production documentation, specifications and/or accompanying package inserts ("Documentation"). No claim of suitability for use in applications regulated by FDA is made. The warranty provided herein is valid only when used by properly trained individuals. Unless otherwise stated in the Documentation, this warranty is limited to one year from date of shipment when the Product is subjected to normal, proper and intended usage. This warranty does not extend to anyone other than the Buyer. Any model or sample furnished to Buyer is merely illustrative of the general type and quality of goods and does not represent that any Product will conform to such model or sample. NO OTHER WARRANTIES, EXPRESS OR IMPLIED, ARE GRANTED INCLUDING WITHOUT LIMITATION, IMPLIED WARRANTIES OF MERCHANTABILITY, FITNESS FOR ANY PARTICULAR PURPOSE, OR NON INFRINGEMENT. BUYER'S EXCLUSIVE REMEDY FOR NON-CONFORMING PRODUCTS DURING THE WARRANTY PERIOD IS LIMITED TO REPAIR, REPLACEMENT OF OR REFUND FOR THE NON-CONFORMING PRODUCT(S) AT SELLER'S SOLE OPTION. THERE IS NO OBLIGATION TO REPAIR, REPLACE OR REFUND FOR PRODUCTS AS THE RESULT OF (I) ACCIDENT, DISASTER OR EVENT OF FORCE MAJEURE, (II) MISUSE, FAULT OR NEGLIGENCE OF OR BY BUYER, (III) USE OF THE PRODUCTS IN A MANNER FOR WHICH THEY WERE NOT DESIGNED, OR (IV) IMPROPER STORAGE AND HANDLING OF THE PRODUCTS. Unless otherwise expressly stated on the Product or in the documentation accompanying the Product, the Product is intended for research only and is not to be used for any other purpose, including without limitation, unauthorized commercial uses, in vitro diagnostic uses, ex vivo or in vivo therapeutic uses, or any type of consumption by or application to human or animals.