

TCR alpha/beta Monoclonal Antibody (IP26), Biotin, eBioscience™

Product Details	
Size	100 µg
Species Reactivity	Human
Host/Isotype	Mouse / IgG1, kappa
Recommended Isotype Control	Mouse IgG1 kappa Isotype Control (P3.6.2.8.1), Biotin, eBioscience™
Class	Monoclonal
Type	Antibody
Clone	IP26
Conjugate	Biotin
Form	Liquid
Concentration	0.5 mg/mL
Purification	Affinity chromatography
Storage buffer	PBS, pH 7.2
Contains	0.09% sodium azide
Storage conditions	4° C, store in dark, DO NOT FREEZE!
RRID	AB_467025

Applications	Tested Dilution	Publications
Flow Cytometry (Flow)	0.5 µg/test	2 Publications

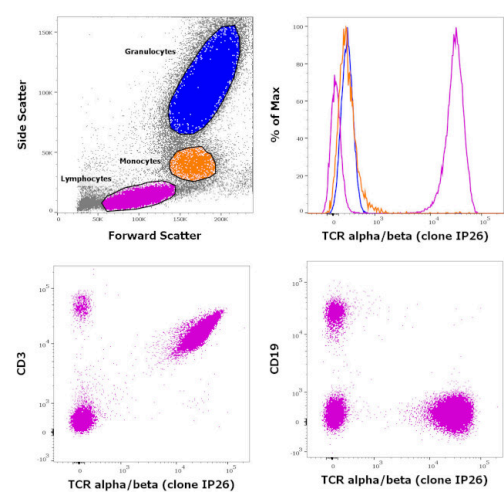
Product Specific Information

Description: The IP26 monoclonal antibody reacts with the alpha beta chain of human TCR. The alpha beta TCR is expressed by the majority of peripheral T cells.

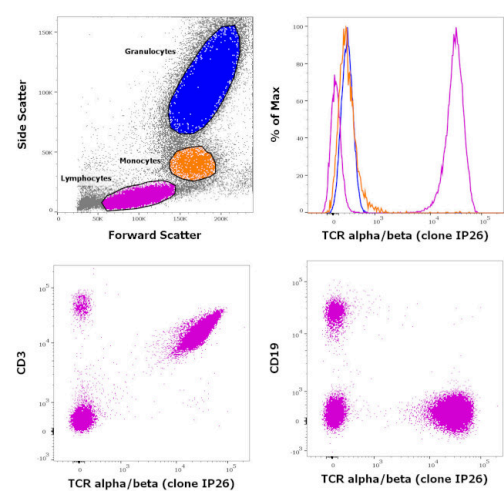
Applications Reported: The IP26 antibody has been reported for use in flow cytometric analysis.

Applications Tested: The IP26 antibody has been tested by flow cytometric analysis of normal human peripheral blood cells. This can be used at less than or equal to 0.5 µg per test. A test is defined as the amount (µg) of antibody that will stain a cell sample in a final volume of 100 µL. Cell number should be determined empirically but can range from 10⁵ to 10⁸ cells/test. It is recommended that the antibody be carefully titrated for optimal performance in the assay of interest.

Filtration: 0.2 µm post-manufacturing filtered.



TCR alpha/beta Antibody (13-9986-82)
Staining of human peripheral blood mononuclear cells with CD45 Pacific Blue, CD3 FITC, CD19 PE and TCR alpha/beta Biotin followed by staining with APC conjugated streptavidin. As expected based on known relative expression patterns, TCR alpha/beta clone IP26 stains a subset of lymphocytes (pink), but not monocytes (orange) and granulocytes (blue). {RE}



TCR alpha/beta Antibody (13-9986-82) in Flow
Staining of human peripheral blood mononuclear cells with CD45 Pacific Blue, CD3 FITC, CD19 PE and TCR alpha/beta Biotin followed by staining with APC conjugated streptavidin. As expected based on known relative expression patterns, TCR alpha/beta clone IP26 stains a subset of lymphocytes (pink), but not monocytes (orange) and granulocytes (blue).

View more figures on thermofisher.cn

Flow Cytometry (2)

Scientific reports	Year 2021
Multi-level remodelling of chromatin underlying activation of human T cells. "Published figure using TCR alpha/beta monoclonal antibody (Product # 13-9986-82) in Flow Cytometry" Authors: Bediaga NG,Coughlan HD,Johanson TM,Garnham AL,Naselli G,Schröder J,Fearnley LG,Bandala-Sanchez E, Allan RS,Smyth GK,Harrison LC	
Nature medicine	Year 2020
Viable bacterial colonization is highly limited in the human intestine in utero. "Published figure using TCR alpha/beta monoclonal antibody (Product # 13-9986-82) in Flow Cytometry" Authors: Rackaityte E,Halkias J,Fukui EM,Mendoza VF,Hayzelden C,Crawford ED,Fujimura KE,Burt TD,Lynch SV	

For Research Use Only. Not for use in diagnostic procedures. Not for resale without express authorization. Products are warranted to operate or perform substantially in conformance with published Product specifications in effect at the time of sale, as set forth in the Production documentation, specifications and/or accompanying package inserts ("Documentation"). No claim of suitability for use in applications regulated by FDA is made. The warranty provided herein is valid only when used by properly trained individuals. Unless otherwise stated in the Documentation, this warranty is limited to one year from date of shipment when the Product is subjected to normal, proper and intended usage. This warranty does not extend to anyone other than the Buyer. Any model or sample furnished to Buyer is merely illustrative of the general type and quality of goods and does not represent that any Product will conform to such model or sample. NO OTHER WARRANTIES, EXPRESS OR IMPLIED, ARE GRANTED INCLUDING WITHOUT LIMITATION, IMPLIED WARRANTIES OF MERCHANTABILITY, FITNESS FOR ANY PARTICULAR PURPOSE, OR NON INFRINGEMENT. BUYER'S EXCLUSIVE REMEDY FOR NON-CONFORMING PRODUCTS DURING THE WARRANTY PERIOD IS LIMITED TO REPAIR, REPLACEMENT OF OR REFUND FOR THE NON-CONFORMING PRODUCT(S) AT SELLER'S SOLE OPTION. THERE IS NO OBLIGATION TO REPAIR, REPLACE OR REFUND FOR PRODUCTS AS THE RESULT OF (i) ACCIDENT, DISASTER OR EVENT OF FORCE MAJEURE, (ii) MISUSE, FAULT OR NEGLIGENCE OF OR BY BUYER, (iii) USE OF THE PRODUCTS IN A MANNER FOR WHICH THEY WERE NOT DESIGNED, OR (iv) IMPROPER STORAGE AND HANDLING OF THE PRODUCTS. Unless otherwise expressly stated on the Product or in the documentation accompanying the Product, the Product is intended for research only and is not to be used for any other purpose, including without limitation, unauthorized commercial uses, in vitro diagnostic uses, ex vivo or in vivo therapeutic uses, or any type of consumption by or application to human or animals.