

CD61 (Integrin beta 3) Monoclonal Antibody (VI-PL2), APC, eBioscience™

Product Details	
Size	100 Tests
Species Reactivity	Baboon, Dog, Cynomolgus monkey, Human, Rhesus monkey
Published Species	Cat, Human
Host/Isotype	Mouse / IgG1, kappa
Recommended Isotype Control	Mouse IgG1 kappa Isotype Control (P3.6.2.8.1), APC, eBioscience™
Class	Monoclonal
Type	Antibody
Clone	VI-PL2
Conjugate	APC
Excitation/Emission Max	651/660 nm
Form	Liquid
Concentration	5 µL/Test
Purification	Affinity chromatography
Storage buffer	PBS, pH 7.2, with 0.2% BSA
Contains	0.09% sodium azide
Storage conditions	4° C, store in dark, DO NOT FREEZE!
RRID	AB_10806969

Applications	Tested Dilution	Publications
Flow Cytometry (Flow)	5 µL (0.25 µg)/test	4 Publications

Product Specific Information

Description: The VI-PL2 monoclonal antibody reacts with human CD61, also known as integrin beta 3 and GPIIIa. CD61 is a 90-110 kDa member of the beta integrin family expressed by a wide variety of cells, including leukocytes, platelets, endothelial and smooth muscle cells. CD61 binds non-covalently with the alpha integrins CD41 and CD51, to form the alpha IIb beta3 (CD41/CD61) and alpha v beta3 (CD51/CD61) complexes. These alpha beta heterodimers are capable of mediating a variety of cellular responses including adhesion, trafficking, proliferation and differentiation. The CD41/CD61 integrin has been shown to be involved in platelet aggregation, and binds to fibrinogen, von Willebrand Factor (vWF) and fibronectin. The CD51/CD61 integrin binds to matrix proteins including vitronectin, fibronectin, vWF and fibrinogen, and has been shown to have a strong role in modulating the migration and survival of angiogenic endothelial cells.

This VI-PL2 antibody has also been shown to crossreact with canine and several non-human primate species, including baboon, rhesus, and cynomolgus monkey.

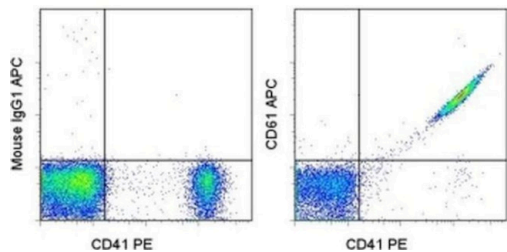
Applications Reported: This VI-PL2 antibody has been reported for use in flow cytometric analysis.

Applications Tested: This VI-PL2 antibody has been pre-titrated and tested by flow cytometric analysis of human platelets. This can be used at 5 µL (0.25 µg) per test. A test is defined as the amount (µg) of antibody that will stain a cell sample in a final volume of 100 µL. Cell number should be determined empirically but can range from 10⁵ to 10⁸ cells/test.

Excitation: 633-647 nm; **Emission:** 660 nm; **Laser:** Red Laser.

Filtration: 0.2 µm post-manufacturing filtered.

Product Images For CD61 (Integrin beta 3) Monoclonal Antibody (VI-PL2), APC, eBioscience™



CD61 (Integrin beta 3) Antibody (17-0619-42) in Flow
Staining of human platelets with Anti-Human CD41 PE (Product # 12-0419-42) and Mouse IgG1 K Isotype Control APC (Product # 17-4714-81) (left) or Anti-Human CD61 (Integrin beta 3) APC (right).

4 References

Flow Cytometry (4)

<p>Nature cell biology</p> <p>RBFOX2 recognizes N⁶-methyladenosine to suppress transcription and block myeloid leukaemia differentiation.</p> <p>"17-0619-42 was used in Flow cytometry/Cell sorting to identify RBFOX2, a well-studied RNA-binding protein, as a chromatin factor that preferentially recognizes m6A on caRNAs."</p> <p>Authors: Dou X,Xiao Y,Shen C,Wang K,Wu T,Liu C,Li Y,Yu X,Liu J,Dai Q,Pajdzik K,Ye C,Ge R,Gao B,Yu J,Sun S, Chen M,Chen J,He C</p>	<p>Year 2023</p> <p>Species Human</p>
<p>Frontiers in cell and developmental biology</p> <p>Neuropilin-1 modulates the 3D invasive properties of glioblastoma stem-like cells.</p> <p>"Published figure using CD61 (Integrin beta 3) monoclonal antibody (Product # 17-0619-42) in Flow Cytometry"</p> <p>Authors: Kerhervé M,Rosiska S,Trillet K,Zeinaty A,Feyeux M,Nedellec S,Gavard J</p>	<p>Year 2022</p> <p>Species Human</p> <p>Dilution 1:20</p>

[View more Flow references on thermofisher.cn](#)

For Research Use Only. Not for use in diagnostic procedures. Not for resale without express authorization. Products are warranted to operate or perform substantially in conformance with published Product specifications in effect at the time of sale, as set forth in the Production documentation, specifications and/or accompanying package inserts ("Documentation"). No claim of suitability for use in applications regulated by FDA is made. The warranty provided herein is valid only when used by properly trained individuals. Unless otherwise stated in the Documentation, this warranty is limited to one year from date of shipment when the Product is subjected to normal, proper and intended usage. This warranty does not extend to anyone other than the Buyer. Any model or sample furnished to Buyer is merely illustrative of the general type and quality of goods and does not represent that any Product will conform to such model or sample. NO OTHER WARRANTIES, EXPRESS OR IMPLIED, ARE GRANTED INCLUDING WITHOUT LIMITATION, IMPLIED WARRANTIES OF MERCHANTABILITY, FITNESS FOR ANY PARTICULAR PURPOSE, OR NON INFRINGEMENT. BUYER'S EXCLUSIVE REMEDY FOR NON-CONFORMING PRODUCTS DURING THE WARRANTY PERIOD IS LIMITED TO REPAIR, REPLACEMENT OF OR REFUND FOR THE NON-CONFORMING PRODUCT(S) AT SELLER'S SOLE OPTION. THERE IS NO OBLIGATION TO REPAIR, REPLACE OR REFUND FOR PRODUCTS AS THE RESULT OF (I) ACCIDENT, DISASTER OR EVENT OF FORCE MAJEURE, (II) MISUSE, FAULT OR NEGLIGENCE OF OR BY BUYER, (III) USE OF THE PRODUCTS IN A MANNER FOR WHICH THEY WERE NOT DESIGNED, OR (IV) IMPROPER STORAGE AND HANDLING OF THE PRODUCTS. Unless otherwise expressly stated on the Product or in the documentation accompanying the Product, the Product is intended for research only and is not to be used for any other purpose, including without limitation, unauthorized commercial uses, in vitro diagnostic uses, ex vivo or in vivo therapeutic uses, or any type of consumption by or application to human or animals.