

GM-CSF Monoclonal Antibody (MP1-22E9), APC, eBioscience™

Product Details	
Size	100 µg
Species Reactivity	Mouse
Published Species	Mouse
Host/Isotype	Rat / IgG2a, kappa
Recommended Isotype Control	Rat IgG2a kappa Isotype Control (eBR2a), APC, eBioscience™
Class	Monoclonal
Type	Antibody
Clone	MP1-22E9
Conjugate	APC
Excitation/Emission Max	651/660 nm
Form	Liquid
Concentration	0.2 mg/mL
Purification	Affinity chromatography
Storage buffer	PBS, pH 7.2
Contains	0.09% sodium azide
Storage conditions	4° C, store in dark, DO NOT FREEZE!
RRID	AB_2762700

Applications	Tested Dilution	Publications
Flow Cytometry (Flow)	0.5 µg/test	7 Publications

Product Specific Information

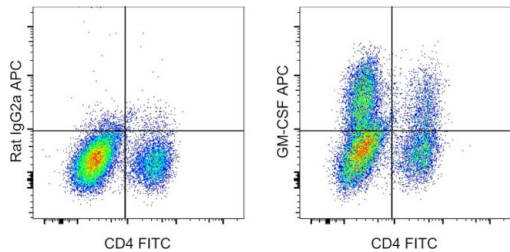
Description: The MP1-22E9 antibody reacts with mouse granulocyte/macrophage - colony stimulating factor (GM-CSF). The MP1-22E9 antibody is a neutralizing antibody. Mouse GM-CSF is a 14 kDa factor produced mainly by activated T cells and macrophages. Other cell types, such as endothelium and fibroblasts, also secrete GM-CSF in response to TNF-alpha, IL-2, IL-1, and IFN-gamma. GM-CSF stimulates growth of macrophages, granulocytes and dendritic cells. GM-CSF is found as a membrane-bound form and also as a complex associated with the extracellular matrix. Non-glycosylated GM-CSF is biologically active.

Applications Reported: This MP1-22E9 antibody has been reported for use in intracellular staining followed by flow cytometric analysis.

Applications Tested: This MP1-22E9 antibody has been tested by intracellular staining followed by flow cytometric analysis of restimulated mouse splenocytes. This may be used at less than or equal to 0.5 µg per test. A test is defined as the amount (µg) of antibody that will stain a cell sample in a final volume of 100 µL. Cell number should be determined empirically but can range from 10⁵ to 10⁸ cells/test. It is recommended that the antibody be carefully titrated for optimal performance in the assay of interest.

Excitation: 633-647 nm; **Emission:** 660 nm; **Laser:** Red Laser

Product Images For GM-CSF Monoclonal Antibody (MP1-22E9), APC, eBioscience™



GM-CSF Antibody (17-7331-82) in Flow
eBioscience™ Mouse Cytokine Positive Control Cells (Product # 00-4500-51) were stained intracellularly, using the Intracellular Fixation & Permeabilization Buffer Set (Product # 88-8824-00) and protocol, with CD4 Monoclonal Antibody, FITC (Product # 11-0042-82) and 0.25 µg of Rat IgG2a kappa Isotype Control, APC (Product # 17-4321-81) (left) or 0.25 µg of GM-CSF Monoclonal Antibody, APC (right). Cells in the lymphocyte gate were used for analysis.

7 References

Flow Cytometry (7)

<p>Therapeutic advances in chronic disease</p> <p>Prevention of EAE by tolerogenic vaccination with PEGylated antigenic peptides.</p> <p>"Published figure using GM-CSF monoclonal antibody (Product # 17-7331-82) in Flow Cytometry"</p> <p>Authors: Pfeil J, Simonetti M, Lauer U, von Thülen B, Durek P, Poulsen C, Pawlowska J, Kröger M, Krähmer R, Leenders F, Hoffmann U, Hamann A</p>	<p>Year 2023</p>
<p>Nature communications</p> <p>PD-L1 positive astrocytes attenuate inflammatory functions of PD-1 positive microglia in models of autoimmune neuroinflammation.</p> <p>"17-7331-82 was used in Flow cytometry/Cell sorting to suggest the glial PD-L1/PD-1 axis as a potential therapeutic target for both acute and progressive MS stages."</p> <p>Authors: Linnerbauer M, Beyer T, Nirschl L, Farrenkopf D, Lößlein L, Vandrey O, Peter A, Tsaktanis T, Kebir H, Laplaud D, Oellinger R, Engleitner T, Alvarez JI, Rad R, Korn T, Hemmer B, Quintana FJ, Rothhammer V</p>	<p>Year 2023</p> <p>Species Mouse</p> <p>Dilution 1:100</p>

[View more Flow references on thermofisher.cn](#)

More applications with references on thermofisher.cn

For Research Use Only. Not for use in diagnostic procedures. Not for resale without express authorization. Products are warranted to operate or perform substantially in conformance with published Product specifications in effect at the time of sale, as set forth in the Production documentation, specifications and/or accompanying package inserts ("Documentation"). No claim of suitability for use in applications regulated by FDA is made. The warranty provided herein is valid only when used by properly trained individuals. Unless otherwise stated in the Documentation, this warranty is limited to one year from date of shipment when the Product is subjected to normal, proper and intended usage. This warranty does not extend to anyone other than the Buyer. Any model or sample furnished to Buyer is merely illustrative of the general type and quality of goods and does not represent that any Product will conform to such model or sample. NO OTHER WARRANTIES, EXPRESS OR IMPLIED, ARE GRANTED INCLUDING WITHOUT LIMITATION, IMPLIED WARRANTIES OF MERCHANTABILITY, FITNESS FOR ANY PARTICULAR PURPOSE, OR NON INFRINGEMENT. BUYER'S EXCLUSIVE REMEDY FOR NON-CONFORMING PRODUCTS DURING THE WARRANTY PERIOD IS LIMITED TO REPAIR, REPLACEMENT OF OR REFUND FOR THE NON-CONFORMING PRODUCT(S) AT SELLER'S SOLE OPTION. THERE IS NO OBLIGATION TO REPAIR, REPLACE OR REFUND FOR PRODUCTS AS THE RESULT OF (i) ACCIDENT, DISASTER OR EVENT OF FORCE MAJEURE, (ii) MISUSE, FAULT OR NEGLIGENCE OF OR BY BUYER, (iii) USE OF THE PRODUCTS IN A MANNER FOR WHICH THEY WERE NOT DESIGNED, OR (iv) IMPROPER STORAGE AND HANDLING OF THE PRODUCTS. Unless otherwise expressly stated on the Product or in the documentation accompanying the Product, the Product is intended for research only and is not to be used for any other purpose, including without limitation, unauthorized commercial uses, in vitro diagnostic uses, ex vivo or in vivo therapeutic uses, or any type of consumption by or application to human or animals.