

CD355 (CRTAM) Monoclonal Antibody (Cr24.1), PE-Cyanine7, eBioscience™

Product Details	
Size	100 Tests
Species Reactivity	Human
Host/Isotype	Mouse / IgG2a, kappa
Recommended Isotype Control	Mouse IgG2a kappa Isotype Control (eBM2a), PE-Cyanine7, eBioscience™
Class	Monoclonal
Type	Antibody
Clone	Cr24.1
Conjugate	PE-Cyanine7
Excitation/Emission Max	569/780 nm
Immunogen	Transfected CRTAM-P815 cells
Form	Liquid
Concentration	5 µL/Test
Purification	Affinity chromatography
Storage buffer	PBS with 0.2% BSA
Contains	0.09% sodium azide
Storage conditions	4° C, store in dark, DO NOT FREEZE!
RRID	AB_2637279

Applications	Tested Dilution	Publications
Flow Cytometry (Flow)	5 µL (1 µg)/test	-

Product Specific Information

This monoclonal antibody Cr24.1 reacts with human CD355, also known as Class-I MHC-restricted T-cell-associated molecule (CRTAM). CD355 usually exists as a homodimer, however, it forms a heterodimer with its ligand Necl-2. CD355 is transiently expressed by activated NK, NKT, gamma delta T, and CD8+ T cells. CD355 is also expressed by Purkinje neurons. Human CD355 is involved in immunosurveillance of cancer cells, gamma delta T cell survival, cell polarity, retention of lymphocytes in lymph nodes, promotion of cytotoxicity in NK cells, and IFN gamma secretion from CD8+ T cells. Cr24.1 has been reported to have antagonist activity.

This Cr24.1 antibody has been pre-titrated and tested by flow cytometric analysis of stimulated normal human peripheral blood cells. This can be used at 5 µL (1 µg) per test. A test is defined as the amount (µg) of antibody that will stain a cell sample in a final volume of 100 µL. Cell number should be determined empirically but can range from 10⁵ to 10⁸ cells/test.

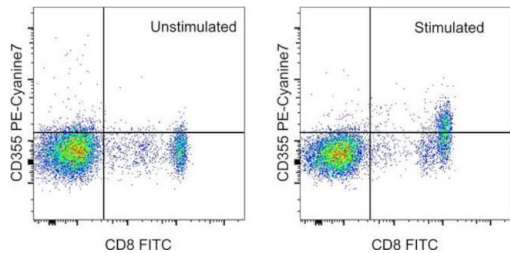
Light sensitivity: This tandem dye is sensitive to photo-induced oxidation. Please protect this vial and stained samples from light.

Fixation: Samples can be stored in IC Fixation Buffer (Product # 00-8222-49) (100 µL of cell sample + 100 µL of IC Fixation Buffer) or 1-step Fix/Lyse Solution (Product # 00-5333-54) for up to 3 days in the dark at 4°C with minimal impact on brightness and FRET efficiency/compensation. Some generalizations regarding fluorophore performance after fixation can be

made, but clone specific performance should be determined empirically.

Filtration: 0.2 µm post-manufacturing filtered.

Product Images For CD355 (CRTAM) Monoclonal Antibody (Cr24.1), PE-Cyanine7, eBioscience™



CD355 (CRTAM) Antibody (25-3559-42) in Flow
Staining of unstimulated (left) or Cell Stimulation Cocktail (Product # 00-4970-03)-stimulated (right) normal human peripheral blood cells with Anti-Human CD8 FITC (Product # 11-0088-42) and Anti-Human CD355 (CRTAM) PE-Cyanine7. Total cells were used for analysis.

For Research Use Only. Not for use in diagnostic procedures. Not for resale without express authorization. Products are warranted to operate or perform substantially in conformance with published Product specifications in effect at the time of sale, as set forth in the Production documentation, specifications and/or accompanying package inserts ("Documentation"). No claim of suitability for use in applications regulated by FDA is made. The warranty provided herein is valid only when used by properly trained individuals. Unless otherwise stated in the Documentation, this warranty is limited to one year from date of shipment when the Product is subjected to normal, proper and intended usage. This warranty does not extend to anyone other than the Buyer. Any model or sample furnished to Buyer is merely illustrative of the general type and quality of goods and does not represent that any Product will conform to such model or sample. NO OTHER WARRANTIES, EXPRESS OR IMPLIED, ARE GRANTED INCLUDING WITHOUT LIMITATION, IMPLIED WARRANTIES OF MERCHANTABILITY, FITNESS FOR ANY PARTICULAR PURPOSE, OR NON-INFRINGEMENT. BUYER'S EXCLUSIVE REMEDY FOR NON-CONFORMING PRODUCTS DURING THE WARRANTY PERIOD IS LIMITED TO REPAIR, REPLACEMENT OF OR REFUND FOR THE NON-CONFORMING PRODUCT(S) AT SELLER'S SOLE OPTION. THERE IS NO OBLIGATION TO REPAIR, REPLACE OR REFUND FOR PRODUCTS AS THE RESULT OF (I) ACCIDENT, DISASTER OR EVENT OF FORCE MAJEURE, (II) MISUSE, FAULT OR NEGLIGENCE OF OR BY BUYER, (III) USE OF THE PRODUCTS IN A MANNER FOR WHICH THEY WERE NOT DESIGNED, OR (IV) IMPROPER STORAGE AND HANDLING OF THE PRODUCTS. Unless otherwise expressly stated on the Product or in the documentation accompanying the Product, the Product is intended for research only and is not to be used for any other purpose, including without limitation, unauthorized commercial uses, in vitro diagnostic uses, ex vivo or in vivo therapeutic uses, or any type of consumption by or application to human or animals.