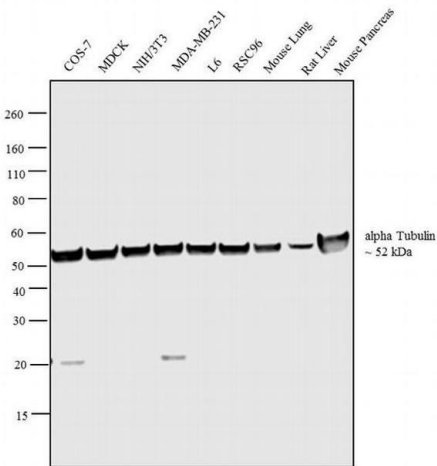


alpha Tubulin Monoclonal Antibody (B-5-1-2)

Product Details	
Size	100 µg
Species Reactivity	Dog, Human, Mouse, Non-human primate, Rat, Sea urchin
Published Species	Dog, Yeast, Rat, Protozoa, Hamster, Bovine, Plant, Human, Mouse, Chicken
Host/Isotype	Mouse / IgG1
Class	Monoclonal
Type	Antibody
Clone	B-5-1-2
Conjugate	Unconjugated
Immunogen	Sarkosyl-resistant filament from sea urchin sperm axonemes.
Form	Liquid
Concentration	0.5 mg/mL
Purification	Protein A
Storage buffer	PBS, pH 7.4
Contains	0.1% sodium azide
Storage conditions	-20°C
RRID	AB_2533071

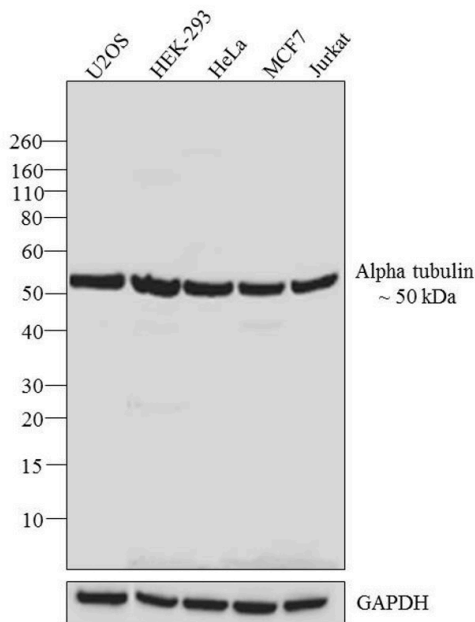
Applications	Tested Dilution	Publications
Western Blot (WB)	0.5-1 µg/mL	65 Publications
Immunohistochemistry (IHC)	-	4 Publications
Immunohistochemistry (Paraffin) (IHC (P))	-	3 Publications
Immunocytochemistry (ICC/IF)	5-10 µg/mL	22 Publications
Miscellaneous PubMed (Misc)	-	5 Publications

Product Images For alpha Tubulin Monoclonal Antibody (B-5-1-2)



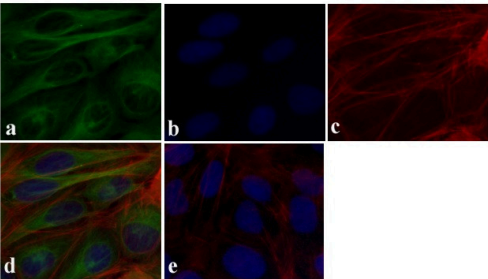
alpha Tubulin Antibody (32-2500) in WB

Western blot analysis was performed on whole cell extracts (30µg lysate) of COS-7 (Lane 1), MDCK (Lane 2), NIH/3T3 (Lane 3), MDA-MB-231 (Lane 4), L6 (Lane 5), RSC96 (Lane 6), tissue extracts of Mouse Lung (Lane 7), Rat Liver (Lane 8) and Mouse Pancreas (Lane 9). The blot was probed with Anti- alpha Tubulin Mouse Monoclonal Antibody (Product # 32-2500, 1µg/mL) and detected by chemiluminescence using Goat anti-Mouse IgG (H+L) Superclonal™ Secondary Antibody, HRP conjugate (Product # A28177, 0.25µg/mL, 1:4000 dilution). A 52 kDa band corresponding to alpha Tubulin was observed across the cell lines and tissues tested. Known quantity of protein samples were electrophoresed using Novex® NuPAGE® 4-12 % Bis-Tris gel (Product # NP0322BOX), XCell SureLock™ Electrophoresis System (Product # EI0002) and Novex® Sharp Pre-Stained Protein Standard (Product # LC5800). Resolved proteins were then transferred onto a nitrocellulose membrane with iBlot® 2 Dry Blotting System (Product # IB21001). The membrane was probed with the relevant primary and secondary Antibody following blocking with 5 % skimmed milk. Chemiluminescent detection was performed using Pierce™ ECL Western Blotting Substrate (Product # 32106).



alpha Tubulin Antibody (32-2500) in WB

Western blot analysis of Alpha-tubulin was performed by loading 20 µg of U2OS (lane1), HEK-293 (lane2), HeLa (lane3), MCF7 (lane4) and Jurkat (lane5) cell lysate using Novex® NuPAGE® 4-12 % Bis-Tris gel (Product # NP0321BOX), XCell SureLock Electrophoresis System (Product # EI0002), Novex® Sharp Pre-Stained Protein Standard (LC5800), and iBlot® Dry Blotting System (IB21001). Proteins were transferred to a nitrocellulose membrane and blocked with 5 % skim milk for 1 hour at room temperature. Alpha-Tubulin was detected at ~55 kDa using Alpha-Tubulin Mouse Monoclonal Antibody (Product # 32-2500) at 0.5-1 µg/mL in 2.5 % skim milk at 4°C overnight on a rocking platform. Goat Anti-Mouse IgG - HRP Secondary Antibody (Product # 62-6520) at 1:4000 dilution was used and chemiluminescent detection was performed using Pierce™ ECL Western Blotting Substrate (Product # 32106).



alpha Tubulin Antibody (32-2500) in ICC/IF

Immunofluorescent analysis of Alpha - Tubulin was done on 70% confluent log phase U-2 OS cells. The cells were fixed with 4% paraformaldehyde for 15 minutes, permeabilized with 0.25% Triton™ X-100 for 10 minutes, and blocked with 5% BSA for 1 hour at room temperature. The cells were labeled with Alpha - Tubulin Mouse Monoclonal Antibody (Product # 32-2500) at 0.5 µg/mL in 1% BSA and incubated for 3 hours at room temperature and then labeled with Alexa Fluor 488 Rabbit Anti-Mouse IgG Secondary Antibody (Product # A-11059) at a dilution of 1:400 for 30 minutes at room temperature (Panel a: green). Nuclei (Panel b: blue) were stained with SlowFade Gold Antifade Mountant with DAPI (Product # S36938). F-actin (Panel c: red) was stained with Alexa Fluor 594 Phalloidin (Product # A12381). Panel d is a merged image showing cytoplasmic localization. Panel e shows no primary antibody control. The images were captured at 20X magnification.

View more figures on thermofisher.cn

Western Blot (65)

International journal of molecular sciences	Year 2022
Understanding In Vitro Pathways to Drug Discovery for TDP-43 Proteinopathies.	Species Human
"32-2500 was used in Western Blotting to highlight the challenges of using cellular models in lead development during drug discovery for ALS and FTD and reinforces the need to perform assessments of novel therapeutics across a variety of cell lines and aetiological models."	Dilution 1:5000
Authors: Cheng HWA,Callis TB,Montgomery AP,Danon JJ,Jorgensen WT,Ke YD,Iltner LM,Werry EL,Kassiou M	
Journal of cell science	Year 2022
Modest increase of KIF11 expression exposes fragilities in the mitotic spindle, causing chromosomal instability.	Species Human
"32-2500 was used in Western Blot, Immunocytochemistry to investigate the molecular and mechanistic basis of Chromosomal instability initiation."	Dilution 1:500
Authors: Dale KL,Armond JW,Hynds RE,Vladimirou E	

[View more WB references on thermofisher.cn](#)

Immunohistochemistry (4)

Microorganisms	Year 2021
Expansion Microscopy Reveals <i>Plasmodium falciparum</i> Blood-Stage Parasites Undergo Anaphase with A Chromatin Bridge in the Absence of Mini-Chromosome Maintenance Complex Binding Protein.	Species Protozoa
"32-2500 was used in Immunohistochemistry to investigate the role of microtubules following mini-chromosome maintenance complex binding-protein depletion and study the nuclear envelope in Plasmodium falciparum."	Dilution 1:1000
Authors: Liffner B,Absalon S	
Tissue barriers	Year 2014
PLEKHA7 modulates epithelial tight junction barrier function.	Species Human Dog
"32-2500 was used in immunocytochemistry and western blot to test whether PLEKHA7 protein modulates epithelial tight junction barrier function"	Dilution 1:150
Authors: Paschoud S,Jond L,Guerrera D,Citi S	

[View more IHC references on thermofisher.cn](#)

More applications with references on thermofisher.cn

- IHC (P) (3)
- ICC/IF (22)
- Misc (5)

For Research Use Only. Not for use in diagnostic procedures. Not for resale without express authorization. Products are warranted to operate or perform substantially in conformance with published Product specifications in effect at the time of sale, as set forth in the Production documentation, specifications and/or accompanying package inserts ("Documentation"). No claim of suitability for use in applications regulated by FDA is made. The warranty provided herein is valid only when used by properly trained individuals. Unless otherwise stated in the Documentation, this warranty is limited to one year from date of shipment when the Product is subjected to normal, proper and intended usage. This warranty does not extend to anyone other than the Buyer. Any model or sample furnished to Buyer is merely illustrative of the general type and quality of goods and does not represent that any Product will conform to such model or sample. NO OTHER WARRANTIES, EXPRESS OR IMPLIED, ARE GRANTED INCLUDING WITHOUT LIMITATION, IMPLIED WARRANTIES OF MERCHANTABILITY, FITNESS FOR ANY PARTICULAR PURPOSE, OR NON-INFRINGEMENT. BUYER'S EXCLUSIVE REMEDY FOR NON-CONFORMING PRODUCTS DURING THE WARRANTY PERIOD IS LIMITED TO REPAIR, REPLACEMENT OF OR REFUND FOR THE NON-CONFORMING PRODUCT(S) AT SELLER'S SOLE OPTION. THERE IS NO OBLIGATION TO REPAIR, REPLACE OR REFUND FOR PRODUCTS AS THE RESULT OF (i) ACCIDENT, DISASTER OR EVENT OF FORCE MAJEURE, (ii) MISUSE, FAULT OR NEGLIGENCE OF OR BY BUYER, (iii) USE OF THE PRODUCTS IN A MANNER FOR WHICH THEY WERE NOT DESIGNED, OR (iv) IMPROPER STORAGE AND HANDLING OF THE PRODUCTS. Unless otherwise expressly stated on the Product or in the documentation accompanying the Product, the Product is intended for research only and is not to be used for any other purpose, including without limitation, unauthorized commercial uses, in vitro diagnostic uses, ex vivo or in vivo therapeutic uses, or any type of consumption by or application to human or animals.