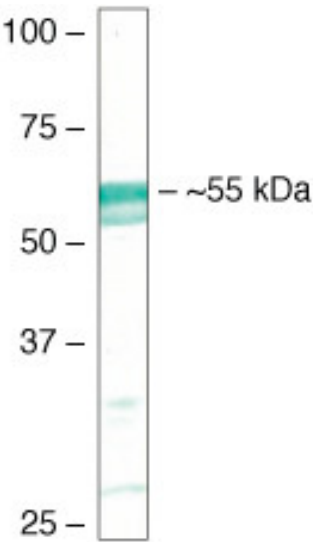


# FBXO5 Monoclonal Antibody (3D2D6)

Product Details	
Size	100 µg
Species Reactivity	Human
Published Species	Mouse, Human
Host/Isotype	Mouse / IgG2a, kappa
Class	Monoclonal
Type	Antibody
Clone	3D2D6
Conjugate	Unconjugated
Immunogen	Synthetic peptide derived from the C-terminal region of human Emi1 (early mitotic inhibitor 1, Fbx5) protein
Form	Liquid
Concentration	0.5 mg/mL
Purification	Protein A
Storage buffer	PBS
Contains	0.1% sodium azide
Storage conditions	-20°C
RRID	AB_2533333

Applications	Tested Dilution	Publications
Western Blot (WB)	Assay-dependent	17 Publications
Immunohistochemistry (IHC)	-	1 Publication
Immunocytochemistry (ICC/IF)	-	1 Publication
Flow Cytometry (Flow)	-	1 Publication
ELISA (ELISA)	Assay-dependent	-
Miscellaneous PubMed (Misc)	-	1 Publication

Product Images For FBXO5 Monoclonal Antibody (3D2D6)



**FBXO5 Antibody (37-6600) in WB**  
Western blot analysis of HEK293 cell lysates using Ms anti-Emi1 (Product # 37-6600).

Western blot analysis of HEK293 cell lysates using Ms anti-Emi1 (Cat. no. 37-6600).

[View more figures on thermofisher.cn](http://thermofisher.cn)

## Western Blot (17)

### Cell reports

#### Excessive E2F Transcription in Single Cancer Cells Precludes Transient Cell-Cycle Exit after DNA Damage.

"37-6600 was used in Western Blotting to study neoplastic cell expression of E2F-dependent transcription within human cancer biopsy specimens."

Authors: Segeren HA, van Rijnberk LM, Moreno E, Riemers FM, van Liere EA, Yuan R, Wubbolts R, de Bruin A, Westendorp B

Year  
2020

Species  
Human

Dilution  
1:1000

### Nature communications

#### Altered G1 signaling order and commitment point in cells proliferating without CDK4/6 activity.

"37-6600 was used in Western Blotting to delineate sequential molecular events in the CDK2-initiated path that are distinct from the CDK4/6-initiated path."

Authors: Liu C, Konagaya Y, Chung M, Daigh LH, Fan Y, Yang HW, Terai K, Matsuda M, Meyer T

Year  
2020

Species  
Human

Dilution  
1:500

[View more WB references on thermofisher.cn](#)

## Immunohistochemistry (1)

### The Journal of biological chemistry

#### Selective enhancing effect of early mitotic inhibitor 1 (Emi1) depletion on the sensitivity of doxorubicin or X-ray treatment in human cancer cells.

Authors: Shimizu N, Nakajima NI, Tsunematsu T, Ogawa I, Kawai H, Hirayama R, Fujimori A, Yamada A, Okayasu R, Ishimaru N, Takata T, Kudo Y

Year  
2013

Species  
Human

## Immunocytochemistry (1)

### Nature

#### EMI1 switches from being a substrate to an inhibitor of APC/C<sup>CDH1</sup> to start the cell cycle.

"37-6600 was used in Immunocytochemistry-immunofluorescence to elucidate the role of early mitotic inhibitor 1 (EMI1) as both a substrate and an inhibitor of anaphase-promoting complex (APC/CCDH1) in cell-cycle commitment."

Authors: Cappell SD, Mark KG, Garbett D, Pack LR, Rape M, Meyer T

Year  
2018

Species  
Human

## More applications with references on thermofisher.cn

[Flow \(1\)](#)

[Misc \(1\)](#)

For Research Use Only. Not for use in diagnostic procedures. Not for resale without express authorization. Products are warranted to operate or perform substantially in conformance with published Product specifications in effect at the time of sale, as set forth in the Production documentation, specifications and/or accompanying package inserts ("Documentation"). No claim of suitability for use in applications regulated by FDA is made. The warranty provided herein is valid only when used by properly trained individuals. Unless otherwise stated in the Documentation, this warranty is limited to one year from date of shipment when the Product is subjected to normal, proper and intended usage. This warranty does not extend to anyone other than the Buyer. Any model or sample furnished to Buyer is merely illustrative of the general type and quality of goods and does not represent that any Product will conform to such model or sample. NO OTHER WARRANTIES, EXPRESS OR IMPLIED, ARE GRANTED INCLUDING WITHOUT LIMITATION, IMPLIED WARRANTIES OF MERCHANTABILITY, FITNESS FOR ANY PARTICULAR PURPOSE, OR NON-INFRINGEMENT. BUYER'S EXCLUSIVE REMEDY FOR NON-CONFORMING PRODUCTS DURING THE WARRANTY PERIOD IS LIMITED TO REPAIR, REPLACEMENT OF OR REFUND FOR THE NON-CONFORMING PRODUCT(S) AT SELLER'S SOLE OPTION. THERE IS NO OBLIGATION TO REPAIR, REPLACE OR REFUND FOR PRODUCTS AS THE RESULT OF (I) ACCIDENT, DISASTER OR EVENT OF FORCE MAJEURE, (II) MISUSE, FAULT OR NEGLIGENCE OF OR BY BUYER, (III) USE OF THE PRODUCTS IN A MANNER FOR WHICH THEY WERE NOT DESIGNED, OR (IV) IMPROPER STORAGE AND HANDLING OF THE PRODUCTS. Unless otherwise expressly stated on the Product or in the documentation accompanying the Product, the Product is intended for research only and is not to be used for any other purpose, including without limitation, unauthorized commercial uses, in vitro diagnostic uses, ex vivo or in vivo therapeutic uses, or any type of consumption by or application to human or animals.