

Connexin 37 Polyclonal Antibody

Product Details

Size	100 µg
Species Reactivity	Mouse, Human
Published Species	Human, Mouse
Host/Isotype	Rabbit / IgG
Class	Polyclonal
Type	Antibody
Conjugate	Unconjugated
Immunogen	Synthetic peptide derived from the C-terminal region of the mouse, rat, golden and Chinese hamster, and predicted dog connexin 37 proteins, which differ from human and chimpanzee by two conservative amino acid changes
Form	Liquid
Concentration	0.25 mg/mL
Purification	Antigen affinity chromatography
Storage buffer	PBS, pH 7.4
Contains	0.1% sodium azide
Storage conditions	-20°C
RRID	AB_2533524

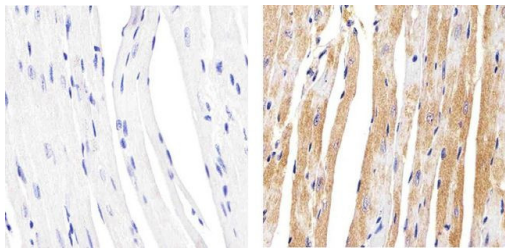
Applications	Tested Dilution	Publications
Western Blot (WB)	2 µg/mL	2 Publications
Immunohistochemistry (IHC)	-	1 Publication
Immunohistochemistry (Paraffin) (IHC (P))	1:10-1:50	-
Immunohistochemistry (Frozen) (IHC (F))	1:10-1:50	-
Immunocytochemistry (ICC/IF)	-	1 Publication
Miscellaneous PubMed (Misc)	-	1 Publication

Product Specific Information

42-4400 was used in the western blot analysis to successfully detect Connexin 37 in mouse lung homogenate.

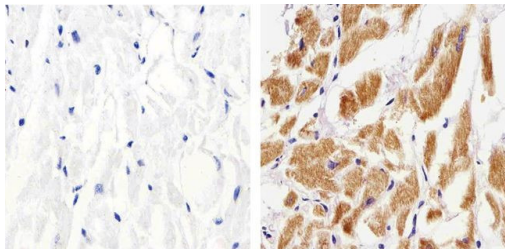
Connexin 37 Antibody (42-4400) in IHC (P)

Immunohistochemistry analysis of Connexin 37 showing staining in the cytoplasm and membrane of paraffin-embedded mouse heart tissue (right) compared to a negative control without primary antibody (left). To expose target proteins, antigen retrieval was performed using 10mM sodium citrate (pH 6.0), microwaved for 8-15 min. Following antigen retrieval, tissues were blocked in 3% H2O2-methanol for 15 min at room temperature, washed with ddH2O and PBS, and then probed with a Connexin 37 polyclonal antibody (Product # 42-4400) diluted in 3% BSA-PBS at a dilution of 1:20 overnight at 4°C in a humidified chamber. Tissues were washed extensively in PBST and detection was performed using an HRP-conjugated secondary antibody followed by colorimetric detection using a DAB kit. Tissues were counterstained with hematoxylin and dehydrated with ethanol and xylene to prep for mounting.



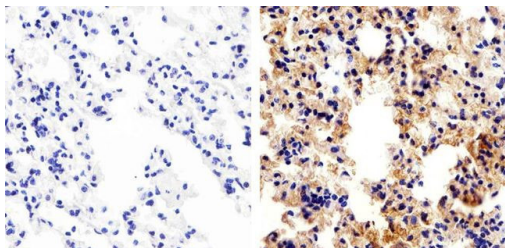
Connexin 37 Antibody (42-4400) in IHC (P)

Immunohistochemistry analysis of Connexin 37 showing staining in the cytoplasm and membrane of paraffin-embedded human heart tissue (right) compared to a negative control without primary antibody (left). To expose target proteins, antigen retrieval was performed using 10mM sodium citrate (pH 6.0), microwaved for 8-15 min. Following antigen retrieval, tissues were blocked in 3% H2O2-methanol for 15 min at room temperature, washed with ddH2O and PBS, and then probed with a Connexin 37 polyclonal antibody (Product # 42-4400) diluted in 3% BSA-PBS at a dilution of 1:20 overnight at 4°C in a humidified chamber. Tissues were washed extensively in PBST and detection was performed using an HRP-conjugated secondary antibody followed by colorimetric detection using a DAB kit. Tissues were counterstained with hematoxylin and dehydrated with ethanol and xylene to prep for mounting.



Connexin 37 Antibody (42-4400) in IHC (P)

Immunohistochemistry analysis of Connexin 37 showing staining in the cytoplasm and membrane of paraffin-embedded mouse lung tissue (right) compared to a negative control without primary antibody (left). To expose target proteins, antigen retrieval was performed using 10mM sodium citrate (pH 6.0), microwaved for 8-15 min. Following antigen retrieval, tissues were blocked in 3% H2O2-methanol for 15 min at room temperature, washed with ddH2O and PBS, and then probed with a Connexin 37 polyclonal antibody (Product # 42-4400) diluted in 3% BSA-PBS at a dilution of 1:20 overnight at 4°C in a humidified chamber. Tissues were washed extensively in PBST and detection was performed using an HRP-conjugated secondary antibody followed by colorimetric detection using a DAB kit. Tissues were counterstained with hematoxylin and dehydrated with ethanol and xylene to prep for mounting.



[View more figures on thermofisher.cn](https://thermofisher.cn)

Western Blot (2)

<p>American journal of physiology. Cell physiology</p> <p>Mitochondrial connexin40 regulates mitochondrial calcium uptake in coronary endothelial cells.</p> <p>"424400 was used in western blot to determine the role of mitochondrial Cx40 in endothelial cells"</p> <p>Authors: Guo R,Si R,Scott BT,Makino A</p>	<p>Year 2017</p> <p>Species Mouse</p> <p>Dilution 1:1000</p>
<p>Archives of physiology and biochemistry</p> <p>TIMP-2 mutant decreases MMP-2 activity and augments pressure overload induced LV dysfunction and heart failure.</p> <p>Authors: Givvimani S,Kundu S,Narayanan N,Armaghan F,Qipshidze N,Pushpakumar S,Vacek TP,Tyagi SC</p>	<p>Year 2013</p> <p>Species Mouse</p>

Immunohistochemistry (1)

<p>Experimental mechanics</p> <p>Probing Endothelial Cell Mechanics Through Connexin 43 Disruption.</p> <p>"42-4400 was used in Immunohistochemistry to investigated the role Cx43 plays in endothelial cell intercellular stress generation and traction generation to bring clarity to the relationship between Cx43 and endothelial cell mechanics."</p> <p>Authors: Islam MM,Steward RL</p>	<p>Year 2019</p> <p>Species Human</p>
--	---

Immunocytochemistry (1)

<p>Cell communication & adhesion</p> <p>Cx37 and Cx43 localize to zona pellucida in mouse ovarian follicles.</p> <p>Authors: Simon AM,Chen H,Jackson CL</p>	<p>Year 2006</p> <p>Species Mouse</p>
--	---

More applications with references on thermofisher.cn

Misc (1)

For Research Use Only. Not for use in diagnostic procedures. Not for resale without express authorization. Products are warranted to operate or perform substantially in conformance with published Product specifications in effect at the time of sale, as set forth in the Production documentation, specifications and/or accompanying package inserts ("Documentation"). No claim of suitability for use in applications regulated by FDA is made. The warranty provided herein is valid only when used by properly trained individuals. Unless otherwise stated in the Documentation, this warranty is limited to one year from date of shipment when the Product is subjected to normal, proper and intended usage. This warranty does not extend to anyone other than the Buyer. Any model or sample furnished to Buyer is merely illustrative of the general type and quality of goods and does not represent that any Product will conform to such model or sample. NO OTHER WARRANTIES, EXPRESS OR IMPLIED, ARE GRANTED INCLUDING WITHOUT LIMITATION, IMPLIED WARRANTIES OF MERCHANTABILITY, FITNESS FOR ANY PARTICULAR PURPOSE, OR NON INFRINGEMENT. BUYER'S EXCLUSIVE REMEDY FOR NON-CONFORMING PRODUCTS DURING THE WARRANTY PERIOD IS LIMITED TO REPAIR, REPLACEMENT OF OR REFUND FOR THE NON-CONFORMING PRODUCT(S) AT SELLER'S SOLE OPTION. THERE IS NO OBLIGATION TO REPAIR, REPLACE OR REFUND FOR PRODUCTS AS THE RESULT OF (I) ACCIDENT, DISASTER OR EVENT OF FORCE MAJEURE, (II) MISUSE, FAULT OR NEGLIGENCE OF OR BY BUYER, (III) USE OF THE PRODUCTS IN A MANNER FOR WHICH THEY WERE NOT DESIGNED, OR (IV) IMPROPER STORAGE AND HANDLING OF THE PRODUCTS. Unless otherwise expressly stated on the Product or in the documentation accompanying the Product, the Product is intended for research only and is not to be used for any other purpose, including without limitation, unauthorized commercial uses, in vitro diagnostic uses, ex vivo or in vivo therapeutic uses, or any type of consumption by or application to human or animals.