

# CD15 Monoclonal Antibody (MMA), eFluor™ 450, eBioscience™

## Product Details

Size	100 Tests
Species Reactivity	Human
Published Species	Human
Host/Isotype	Mouse / IgM
Recommended Isotype Control	Mouse IgM Isotype Control (11E10), eFluor™ 450, eBioscience™
Class	Monoclonal
Type	Antibody
Clone	MMA
Conjugate	eFluor™ 450
Excitation/Emission Max	405/445 nm
Form	Liquid
Concentration	5 µL/Test
Purification	Affinity chromatography
Storage buffer	PBS, pH 7.2, with 0.2% BSA
Contains	0.09% sodium azide
Storage conditions	4° C, store in dark, DO NOT FREEZE!
RRID	AB_1907348

Applications	Tested Dilution	Publications
Immunocytochemistry (ICC/IF)	-	1 Publication
Flow Cytometry (Flow)	5 µL (0.125 µg)/test	7 Publications

## Product Specific Information

**Description:** The MMA monoclonal antibody reacts with human CD15, Lewis X. This 3-fucosyl-N-acetylactosamine carbohydrate moiety is expressed by granulocytes. Monocytes express this structure at varying degree while lymphocytes are negative.

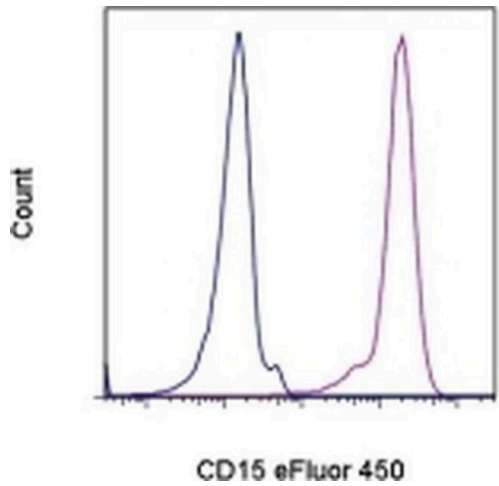
**Applications Reported:** This MMA antibody has been reported for use in flow cytometric analysis.

**Applications Tested:** This MMA antibody has been pre-titrated and tested by flow cytometric analysis of normal human peripheral blood cells. This can be used at 5 µL (0.125 µg) per test. A test is defined as the amount (µg) of antibody that will stain a cell sample in a final volume of 100 µL. Cell number should be determined empirically but can range from 10<sup>5</sup> to 10<sup>8</sup> cells/test.

eFluor® 450 is an alternative to Pacific Blue®. eFluor® 450 emits at 445 nm and is excited with the Violet laser (405 nm). Please make sure that your instrument is capable of detecting this fluorochrome.

**Excitation:** 405 nm; **Emission:** 445 nm; **Laser:** Violet Laser.

**Filtration:** 0.2 µm post-manufacturing filtered.



**CD15 Antibody (48-0158-42) in Flow**  
Staining of normal human peripheral blood cells with Mouse IgM Isotype Control eFluor® 450 (blue histogram) or Anti-Human CD15 eFluor® 450 (purple histogram). Cells in the granulocyte gate were used for analysis.

[View more figures on thermofisher.cn](#)

8 References

Immunocytochemistry (1)

Oncoimmunology	Year 2022
<b>Neutrophil extracellular traps induce tumor metastasis through dual effects on cancer and endothelial cells.</b>	
"Published figure using CD15 monoclonal antibody (Product # 48-0158-42) in Flow Cytometry"	
Authors: Jiang ZZ,Peng ZP,Liu XC,Guo HF,Zhou MM,Jiang D,Ning WR,Huang YF,Zheng L,Wu Y	

Flow Cytometry (7)

Journal for immunotherapy of cancer	Year 2023
<b>LAL deficiency induced myeloid-derived suppressor cells as targets and biomarkers for lung cancer.</b>	
"Published figure using CD15 monoclonal antibody (Product # 48-0158-42) in Flow Cytometry"	
Authors: Zhao T,Liu S,Hanna NH,Jalal S,Ding X,Wan J,Yan C,Du H	

Oncoimmunology	Year 2022
<b>Neutrophil extracellular traps induce tumor metastasis through dual effects on cancer and endothelial cells.</b>	
"Published figure using CD15 monoclonal antibody (Product # 48-0158-42) in Flow Cytometry"	
Authors: Jiang ZZ,Peng ZP,Liu XC,Guo HF,Zhou MM,Jiang D,Ning WR,Huang YF,Zheng L,Wu Y	

[View more Flow references on thermofisher.cn](#)

More applications with references on thermofisher.cn

For Research Use Only. Not for use in diagnostic procedures. Not for resale without express authorization. Products are warranted to operate or perform substantially in conformance with published Product specifications in effect at the time of sale, as set forth in the Production documentation, specifications and/or accompanying package inserts ("Documentation"). No claim of suitability for use in applications regulated by FDA is made. The warranty provided herein is valid only when used by properly trained individuals. Unless otherwise stated in the Documentation, this warranty is limited to one year from date of shipment when the Product is subjected to normal, proper and intended usage. This warranty does not extend to anyone other than the Buyer. Any model or sample furnished to Buyer is merely illustrative of the general type and quality of goods and does not represent that any Product will conform to such model or sample. NO OTHER WARRANTIES, EXPRESS OR IMPLIED, ARE GRANTED INCLUDING WITHOUT LIMITATION, IMPLIED WARRANTIES OF MERCHANTABILITY, FITNESS FOR ANY PARTICULAR PURPOSE, OR NON INFRINGEMENT. BUYER'S EXCLUSIVE REMEDY FOR NON-CONFORMING PRODUCTS DURING THE WARRANTY PERIOD IS LIMITED TO REPAIR, REPLACEMENT OF OR REFUND FOR THE NON-CONFORMING PRODUCT(S) AT SELLER'S SOLE OPTION. THERE IS NO OBLIGATION TO REPAIR, REPLACE OR REFUND FOR PRODUCTS AS THE RESULT OF (I) ACCIDENT, DISASTER OR EVENT OF FORCE MAJEURE, (II) MISUSE, FAULT OR NEGLIGENCE OF OR BY BUYER, (III) USE OF THE PRODUCTS IN A MANNER FOR WHICH THEY WERE NOT DESIGNED, OR (IV) IMPROPER STORAGE AND HANDLING OF THE PRODUCTS. Unless otherwise expressly stated on the Product or in the documentation accompanying the Product, the Product is intended for research only and is not to be used for any other purpose, including without limitation, unauthorized commercial uses, in vitro diagnostic uses, ex vivo or in vivo therapeutic uses, or any type of consumption by or application to human or animals.