

# IL-1 alpha Polyclonal Antibody, PeproTech®

## Product Details

Size	1 mg
Species Reactivity	Rat
Published Species	Rat
Host/Isotype	Goat
Class	Polyclonal
Type	Antibody
Conjugate	Unconjugated
Immunogen	E.coli-derived Recombinant Rat IL-1alpha
Form	Lyophilized
Concentration	0.1-1.0 mg/mL
Purification	Antigen affinity chromatography
Storage buffer	PBS
Contains	no preservative
Storage conditions	-20°C

Applications	Tested Dilution	Publications
Western Blot (WB)	0.1-0.2 µg/mL	-
ELISA (ELISA)	0.5-2.0 µg/mL	-
Miscellaneous PubMed (Misc)	-	1 Publication

## Product Specific Information

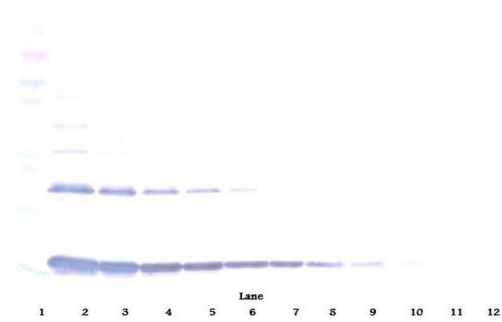
AA Sequence of recombinant protein: MAPHSFQNNL RYKLIRIVKQ EFIMNDSLNLQ NIYVDMMDRIH LKAASLNDLQ LEVKFDMYAY SSGGDSKYPV TLKVSNTQLF VSAQGEDKPV LLKEIPETPK LITGSETDLI FFWEKINSKN YFTSAAFPEL LIATKEQSQV HLARGLPMSI DFQIS.

Preparation: Produced from sera of goats immunized with highly pure Recombinant Rat IL-1alpha. Anti-Rat IL-1alpha-specific antibody was purified by affinity chromatography employing an immobilized Rat IL-1alpha matrix.

Sandwich ELISA: To detect Rat IL-1alpha by sandwich ELISA (using 100 µL/well antibody solution) a concentration of 0.5-2.0 µg/mL of this antibody is required. This antigen affinity purified antibody, in conjunction with PeproTech Biotinylated Anti-Rat IL-1alpha (500-P180GBt) as a detection antibody, allows the detection of at least 0.2-0.4 ng/well of Recombinant Rat IL-1alpha.

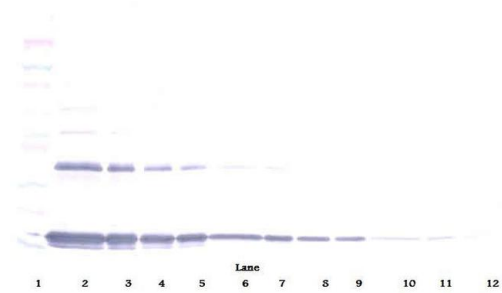
Western Blot: To detect Rat IL-1alpha by Western Blot analysis this antibody can be used at a concentration of 0.1- 0.2 µg/mL. Used in conjunction with compatible secondary reagents the detection limit for Recombinant Rat IL-1alpha is 1.5-3.0 ng/lane, under either reducing or non-reducing conditions.

Product Images For IL-1 alpha Polyclonal Antibody, PeproTech®



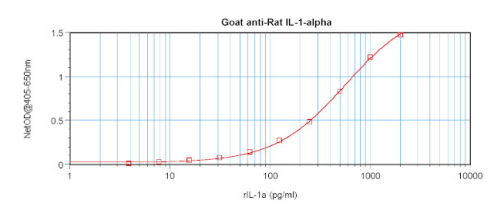
IL-1 alpha Antibody (500-P180G-1MG) in WB

Western Blot: To detect Rat IL-1alpha by Western Blot analysis IL-1 alpha Polyclonal Antibody (Product # 500-P180G-1MG) can be used at a concentration of 0.1- 0.2 µg/mL. Used in conjunction with compatible secondary reagents the detection limit for Recombinant Rat IL-1alpha is 1.5-3.0 ng/lane, under either reducing or non-reducing conditions.



IL-1 alpha Antibody (500-P180G-1MG) in WB

Western Blot: To detect Rat IL-1alpha by Western Blot analysis IL-1 alpha Polyclonal Antibody (Product # 500-P180G-1MG) can be used at a concentration of 0.1- 0.2 µg/mL. Used in conjunction with compatible secondary reagents the detection limit for Recombinant Rat IL-1alpha is 1.5-3.0 ng/lane, under either reducing or non-reducing conditions.



IL-1 alpha Antibody (500-P180G-1MG) in ELISA

Sandwich ELISA: To detect Rat IL-1alpha by sandwich ELISA (using 100 µL/well antibody solution) a concentration of 0.5-2.0 µg/mL of IL-1 alpha Polyclonal Antibody (Product # 500-P180G-1MG) is required. This antigen affinity purified antibody, in conjunction with PeproTech IL-1 alpha Polyclonal Antibody, Biotin (Product # 500-P180GBT-1MG) as a detection antibody, allows the detection of at least 0.2-0.4 ng/well of Recombinant Rat IL-1alpha.

1 Reference

Miscellaneous PubMed (1)

Cell death & disease	Year
Epothilone B impairs functional recovery after spinal cord injury by increasing secretion of macrophage colony-stimulating factor.	2017
Authors: Mao L,Gao W,Chen S,Song Y,Song C,Zhou Z,Zhao H,Zhou K,Wang W,Zhu K,Liu C,Mei X	Species
	Rat

For Research Use Only. Not for use in diagnostic procedures. Not for resale without express authorization. Products are warranted to operate or perform substantially in conformance with published Product specifications in effect at the time of sale, as set forth in the Production documentation, specifications and/or accompanying package inserts ("Documentation"). No claim of suitability for use in applications regulated by FDA is made. The warranty provided herein is valid only when used by properly trained individuals. Unless otherwise stated in the Documentation, this warranty is limited to one year from date of shipment when the Product is subjected to normal, proper and intended usage. This warranty does not extend to anyone other than the Buyer. Any model or sample furnished to Buyer is merely illustrative of the general type and quality of goods and does not represent that any Product will conform to such model or sample. NO OTHER WARRANTIES, EXPRESS OR IMPLIED, ARE GRANTED INCLUDING WITHOUT LIMITATION, IMPLIED WARRANTIES OF MERCHANTABILITY, FITNESS FOR ANY PARTICULAR PURPOSE, OR NON INFRINGEMENT. BUYER'S EXCLUSIVE REMEDY FOR NON-CONFORMING PRODUCTS DURING THE WARRANTY PERIOD IS LIMITED TO REPAIR, REPLACEMENT OF OR REFUND FOR THE NON-CONFORMING PRODUCT(S) AT SELLER'S SOLE OPTION. THERE IS NO OBLIGATION TO REPAIR, REPLACE OR REFUND FOR PRODUCTS AS THE RESULT OF (I) ACCIDENT, DISASTER OR EVENT OF FORCE MAJEURE, (II) MISUSE, FAULT OR NEGLIGENCE OF OR BY BUYER, (III) USE OF THE PRODUCTS IN A MANNER FOR WHICH THEY WERE NOT DESIGNED, OR (IV) IMPROPER STORAGE AND HANDLING OF THE PRODUCTS. Unless otherwise expressly stated on the Product or in the documentation accompanying the Product, the Product is intended for research only and is not to be used for any other purpose, including without limitation, unauthorized commercial uses, in vitro diagnostic uses, ex vivo or in vivo therapeutic uses, or any type of consumption by or application to human or animals.