

CD321 (F11R) Monoclonal Antibody (CSTEM27), Alexa Fluor™ 488, eBioscience™

Product Details	
Size	100 Tests
Species Reactivity	Human
Host/Isotype	Mouse / IgG2a, kappa
Recommended Isotype Control	Mouse IgG2a kappa Isotype Control (eBM2a), Alexa Fluor™ 488, eBioscience™
Class	Monoclonal
Type	Antibody
Clone	CSTEM27
Conjugate	Alexa Fluor™ 488
Excitation/Emission Max	499/520 nm
Form	Liquid
Concentration	5 µL/Test
Purification	Affinity chromatography
Storage buffer	PBS, pH 7.2, with 0.2% BSA
Contains	0.09% sodium azide
Storage conditions	4° C, store in dark, DO NOT FREEZE!
RRID	AB_2688308

Applications	Tested Dilution	Publications
Western Blot (WB)	-	2 Publications
Immunocytochemistry (ICC/IF)	5 µg/mL	-
Flow Cytometry (Flow)	5 µL (0.25 µg)/test	-

Product Specific Information

This monoclonal antibody CSTEM27 reacts with human CD321 (F11R, JAM-1, JAM-A).

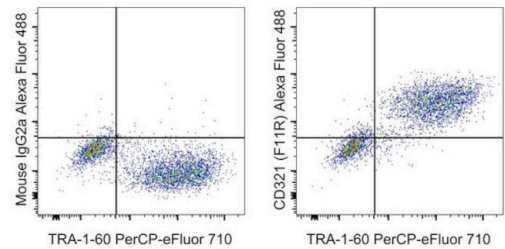
Applications Reported: This CSTEM27 antibody has been reported for use in immunocytochemical staining and flow cytometric analysis.

This CSTEM27 antibody has been tested by immunocytochemistry of adherent cells. This can be used at less than or equal to 5 µg/mL. This CSTEM27 antibody has also been tested by flow cytometric analysis of human iPSCs. This may be used at 0.25 µg/test. A test is defined as the amount (µg) of antibody that will stain a cell sample in a final volume of 100 µL. Cell number should be determined empirically but can range from 10⁵ to 10⁸ cells/test. It is recommended that the antibody be carefully titrated for optimal performance in the assay of interest.

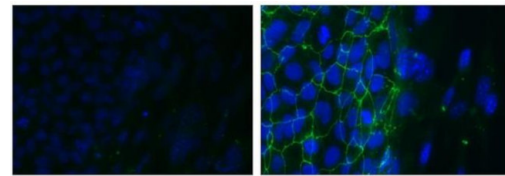
Excitation: 488 nm; Emission: 519 nm; Laser: Blue Laser.

Filtration: 0.2 µm post-manufacturing filtered.

Product Images For CD321 (F11R) Monoclonal Antibody (CSTEM27), Alexa Fluor™ 488, eBioscience™



CD321 (F11R) Antibody (53-3219-42) in Flow
Staining of a mixture of human iPSC and the C2C12 murine cell line with Anti-Human TRA-1-60 PerCp-eFluor 710 (Product # 46-8863-82) and Mouse IgG2a K Isotype Control Alexa Fluor® 488 (Product # 53-4724-80) (left) or Anti-Human CD321 (F11R) Alexa Fluor® 488 (right).



CD321 (F11R) Antibody (53-3219-42) in ICC/IF
Immunocytochemistry of fixed and permeabilized human iPSCs plated on murine derived feeder cells using 5 µg/mL Mouse IgG2a K Isotype Control Alexa Fluor® 488 (Product # 53-4724-80) (left) or 5 µg/mL Anti-CD321 (F11R) Alexa Fluor® 488 (right). Nuclei are stained with DAPI. An iPSC colony (positive staining) and murine derived feeder cells (negative staining) are in both fields of view above.

[View more figures on thermofisher.cn](#)

2 References

Western Blot (2)

<p>Frontiers in cellular and infection microbiology</p> <p>Control of <i>CDH1/E</i>-Cadherin Gene Expression and Release of a Soluble Form of E-Cadherin in SARS-CoV-2 Infected Caco-2 Intestinal Cells: Physiopathological Consequences for the Intestinal Forms of COVID-19.</p> <p>"Published figure using CD321 (F11R) monoclonal antibody (Product # 53-3219-42) in Western Blot"</p> <p>Authors: Osman IO,Garrec C,de Souza GAP,Zarubica A,Belhaouari DB,Baudoin JP,Lepidi H,Mege JL,Malissen B, Scola B,Devaux CA</p>	<p>Year 2022</p>
<p>Frontiers in cardiovascular medicine</p> <p>SARS-CoV-2 Spike Protein Induces Degradation of Junctional Proteins That Maintain Endothelial Barrier Integrity.</p> <p>"Published figure using CD321 (F11R) monoclonal antibody (Product # 53-3219-42) in Western Blot"</p> <p>Authors: Raghavan S,Kenchappa DB,Leo MD</p>	<p>Year 2021</p>

For Research Use Only. Not for use in diagnostic procedures. Not for resale without express authorization. Products are warranted to operate or perform substantially in conformance with published Product specifications in effect at the time of sale, as set forth in the Production documentation, specifications and/or accompanying package inserts ("Documentation"). No claim of suitability for use in applications regulated by FDA is made. The warranty provided herein is valid only when used by properly trained individuals. Unless otherwise stated in the Documentation, this warranty is limited to one year from date of shipment when the Product is subjected to normal, proper and intended usage. This warranty does not extend to anyone other than the Buyer. Any model or sample furnished to Buyer is merely illustrative of the general type and quality of goods and does not represent that any Product will conform to such model or sample. NO OTHER WARRANTIES, EXPRESS OR IMPLIED, ARE GRANTED INCLUDING WITHOUT LIMITATION, IMPLIED WARRANTIES OF MERCHANTABILITY, FITNESS FOR ANY PARTICULAR PURPOSE, OR NON INFRINGEMENT. BUYER'S EXCLUSIVE REMEDY FOR NON-CONFORMING PRODUCTS DURING THE WARRANTY PERIOD IS LIMITED TO REPAIR, REPLACEMENT OF OR REFUND FOR THE NON-CONFORMING PRODUCT(S) AT SELLER'S SOLE OPTION. THERE IS NO OBLIGATION TO REPAIR, REPLACE OR REFUND FOR PRODUCTS AS THE RESULT OF (i) ACCIDENT, DISASTER OR EVENT OF FORCE MAJEURE, (ii) MISUSE, FAULT OR NEGLIGENCE OF OR BY BUYER, (iii) USE OF THE PRODUCTS IN A MANNER FOR WHICH THEY WERE NOT DESIGNED, OR (iv) IMPROPER STORAGE AND HANDLING OF THE PRODUCTS. Unless otherwise expressly stated on the Product or in the documentation accompanying the Product, the Product is intended for research only and is not to be used for any other purpose, including without limitation, unauthorized commercial uses, in vitro diagnostic uses, ex vivo or in vivo therapeutic uses, or any type of consumption by or application to human or animals.