

# CD123 Monoclonal Antibody (6H6), Alexa Fluor™ 700, eBioscience™

Product Details	
Size	100 Tests
Species Reactivity	Human
Host/Isotype	Mouse / IgG1, kappa
Recommended Isotype Control	Mouse IgG1 kappa Isotype Control (P3.6.2.8.1), Alexa Fluor™ 700, eBioscience™
Class	Monoclonal
Type	Antibody
Clone	6H6
Conjugate	Alexa Fluor™ 700
Excitation/Emission Max	696/719 nm
Form	Liquid
Concentration	5 µL/Test
Purification	Affinity chromatography
Storage buffer	PBS, pH 7.2, with 0.2% BSA
Contains	0.09% sodium azide
Storage conditions	4° C, store in dark, DO NOT FREEZE!
RRID	AB_2815248

Applications	Tested Dilution	Publications
Flow Cytometry (Flow)	5 µL (0.06 µg)/test	4 Publications

## Product Specific Information

**Description:** The 6H6 monoclonal antibody reacts with human CD123, the alpha chain of the IL-3 receptor. This 60-70 kDa transmembrane protein binds to IL-3 with low affinity by itself, and when associated with CD131 (common beta chain) binds IL-3 with high affinity. CD123 is expressed by myeloid precursors, macrophages, dendritic cells, mast cells, basophils, and megakaryocytes.

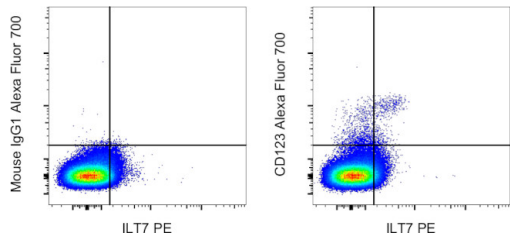
**Applications Reported:** This 6H6 antibody has been reported for use in flow cytometric analysis.

**Applications Tested:** This 6H6 antibody has been pre-diluted and tested by flow cytometric analysis of normal human peripheral blood cells. This may be used at 5 µL (0.06 µg) per test. A test is defined as the amount (µg) of antibody that will stain a cell sample in a final volume of 100 µL. Cell number should be determined empirically but can range from 10<sup>5</sup> to 10<sup>8</sup> cells/test.

Alexa Fluor 700 emits at 723 nm and can be excited with the red laser (633-647 nm). Most instruments will require a 685 LP mirror and 710/20 band pass filter. Please make sure that your instrument is capable of detecting this fluorochrome.

Excitation: 633-647 nm; Emission: 723 nm; Laser: Red Laser

Product Images For CD123 Monoclonal Antibody (6H6), Alexa Fluor™ 700, eBioscience™



**CD123 Antibody (56-1239-42) in Flow**  
Normal human peripheral blood cells were stained with ILT7 Monoclonal Antibody, PE (Product # 12-5179-42) and Mouse IgG1 kappa Isotype Control, Alexa Fluor 700 (Product # 56-4714-80) (left) or CD123 Monoclonal Antibody, Alexa Fluor 700 (right). Cells in the lymphocyte gate were used for analysis.

4 References

Flow Cytometry (4)

Frontiers in immunology	Year 2021
<b>Unsupervised Analysis of Flow Cytometry Data in a Clinical Setting Captures Cell Diversity and Allows Population Discovery.</b> "Published figure using CD123 monoclonal antibody (Product # 56-1239-42) in Flow Cytometry" Authors: Baumgaertner P,Sankar M,Herrera F,Benedetti F,Barras D,Thierry AC,Dangaj D,Kandalaf LE,Coukos G,Xenarios I,Gueux N,Harari A	
Frontiers in immunology	Year 2021
<b>Systems Biology Methods Applied to Blood and Tissue for a Comprehensive Analysis of Immune Response to Hepatitis B Vaccine in Adults.</b> "Published figure using CD123 monoclonal antibody (Product # 56-1239-42) in Flow Cytometry" Authors: Ben-Othman R,Cai B,Liu AC,Varankovich N,He D,Blimkie TM,Lee AH,Gill EE,Novotny M,Aevermann B,Drissler S,Shannon CP,McCann S,Marty K,Bjornson G,Edgar RD,Lin DTS,Gladish N,MacIsaac J,Amenyogbe N,Chan Q,Llibre A,Collin J,Landais E,Le K,Reiss SM,Koff WC,Havenar-Daughton C,Heran M,Sangha B,Walt D,Krajden M,Crotty S,Sok D,Briney B,Burton DR,Duffy D,Foster LJ,Mohn WW,Kobor MS,Tebbutt SJ,Brinkman RR,Scheuermann RH,Hancock REW,Kollmann TR,Sadarangani M	

[View more Flow references on thermofisher.cn](#)

For Research Use Only. Not for use in diagnostic procedures. Not for resale without express authorization. Products are warranted to operate or perform substantially in conformance with published Product specifications in effect at the time of sale, as set forth in the Production documentation, specifications and/or accompanying package inserts ("Documentation"). No claim of suitability for use in applications regulated by FDA is made. The warranty provided herein is valid only when used by properly trained individuals. Unless otherwise stated in the Documentation, this warranty is limited to one year from date of shipment when the Product is subjected to normal, proper and intended usage. This warranty does not extend to anyone other than the Buyer. Any model or sample furnished to Buyer is merely illustrative of the general type and quality of goods and does not represent that any Product will conform to such model or sample. NO OTHER WARRANTIES, EXPRESS OR IMPLIED, ARE GRANTED INCLUDING WITHOUT LIMITATION, IMPLIED WARRANTIES OF MERCHANTABILITY, FITNESS FOR ANY PARTICULAR PURPOSE, OR NON INFRINGEMENT. BUYER'S EXCLUSIVE REMEDY FOR NON-CONFORMING PRODUCTS DURING THE WARRANTY PERIOD IS LIMITED TO REPAIR, REPLACEMENT OF OR REFUND FOR THE NON-CONFORMING PRODUCT(S) AT SELLER'S SOLE OPTION. THERE IS NO OBLIGATION TO REPAIR, REPLACE OR REFUND FOR PRODUCTS AS THE RESULT OF (I) ACCIDENT, DISASTER OR EVENT OF FORCE MAJEURE, (II) MISUSE, FAULT OR NEGLIGENCE OF OR BY BUYER, (III) USE OF THE PRODUCTS IN A MANNER FOR WHICH THEY WERE NOT DESIGNED, OR (IV) IMPROPER STORAGE AND HANDLING OF THE PRODUCTS. Unless otherwise expressly stated on the Product or in the documentation accompanying the Product, the Product is intended for research only and is not to be used for any other purpose, including without limitation, unauthorized commercial uses, in vitro diagnostic uses, ex vivo or in vivo therapeutic uses, or any type of consumption by or application to human or animals.