

OTX2 Recombinant Rabbit Monoclonal Antibody (14H14L5)

Product Details	
Size	100 µg
Species Reactivity	Human, Mouse, Rat
Published Species	Human
Host/Isotype	Rabbit / IgG
Expression system	Expi293
Class	Recombinant Monoclonal
Type	Antibody
Clone	14H14L5
Conjugate	Unconjugated
Immunogen	Peptides corresponding to Human OTX2 (aa 20-39, 276-289)
Form	Liquid
Concentration	0.5 mg/mL
Purification	Protein A
Storage buffer	PBS, pH 7.2
Contains	0.09% sodium azide
Storage conditions	Store at 4°C short term. For long term storage, store at -20°C, avoiding freeze/thaw cycles.
RRID	AB_2608961

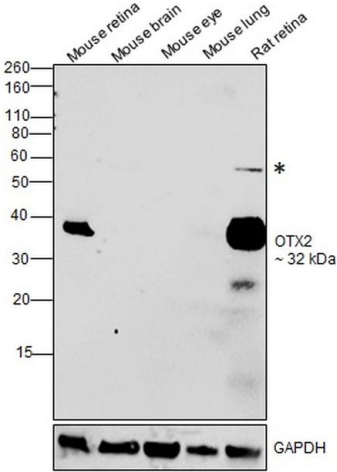
Applications	Tested Dilution	Publications
Western Blot (WB)	0.5 -1 µg/mL	-
Immunohistochemistry (IHC)	-	1 Publication
Immunocytochemistry (ICC/IF)	2 µg/mL	2 Publications

Product Specific Information

This antibody is predicted to react with Rat, Mouse, Pig and Sheep.

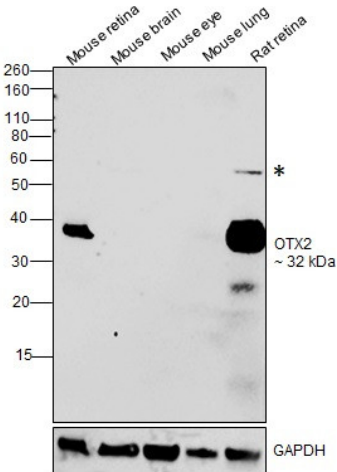
Recombinant rabbit monoclonal antibodies are produced using in vitro expression systems. The expression systems are developed by cloning in the specific antibody DNA sequences from immunoreactive rabbits. Then, individual clones are screened to select the best candidates for production. The advantages of using recombinant rabbit monoclonal antibodies include: better specificity and sensitivity, lot-to-lot consistency, animal origin-free formulations, and broader immunoreactivity to diverse targets due to larger rabbit immune repertoire.

Product Images For OTX2 Recombinant Rabbit Monoclonal Antibody (14H14L5)



OTX2 Antibody (701948) in WB

Western blot was performed using Anti-OTX2 Recombinant Rabbit Monoclonal Antibody (14H14L5) (Product # 701948) and a 32 kDa band corresponding to OTX2, along with an uncharacterized band (*) was observed in mouse retina and rat retina as compared to other tissues. Tissue extracts (30 µg lysate) of Mouse retina (Lane 1), Mouse brain (Lane 2), Mouse eye (Lane 3), Mouse lung (Lane 4) and Rat retina (Lane 5) were electrophoresed using Novex® NuPAGE® 12 % Bis-Tris gel (Product # NP0342BOX). Resolved proteins were then transferred onto a nitrocellulose membrane (Product # IB23001) by iBlot® 2 Dry Blotting System (Product # IB21001). The blot was probed with the primary antibody (1:1000 dilution) and detected by chemiluminescence with Goat anti-Rabbit IgG (Heavy Chain), Superclonal™ Recombinant Secondary Antibody, HRP (Product # A27036, 1:4000 dilution) using the iBright FL 1000 (Product # A32752). Chemiluminescent detection was performed using Novex® ECL Chemiluminescent Substrate Reagent Kit (Product # WP20005).

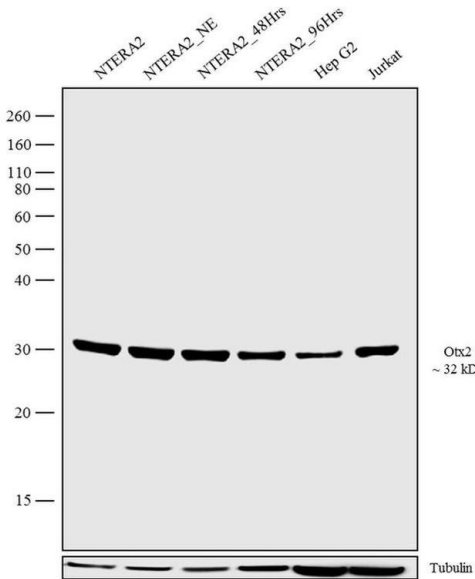


OTX2 Antibody (701948)

Antibody specificity was demonstrated by detection of differential basal expression of the target across tissue tested owing to their inherent genetic constitution. Relative expression of OTX2 was observed in Mouse retina in comparison to Mouse Brain, Mouse Eye and Mouse Lung using Anti-OTX2 Recombinant Rabbit Monoclonal Antibody (14H14L5) (Product # 701948) in Western Blot. {RE}

OTX2 Antibody (701948) in WB

Western blot analysis was performed on cell extracts (30 µg lysate) of NTERA-2 - Whole cell extract (Lane1), Nuclear extract of NTERA-2 (Lane 2), Nuclear extract of NTERA-2 differentiated with 20% FBS for 48 hours (Lane 3), Nuclear extract of NTERA-2 differentiated with 20% FBS for 96 hours (Lane 4), HepG2 (Lane 5) and Jurkat (Lane 6). The blots were probed with Anti-OTX 2 Recombinant Rabbit Monoclonal Antibody (Product # 701948, 0.5-1 µg/mL) and detected by chemiluminescence using Goat anti-Rabbit IgG (Heavy Chain) Superclonal™ Secondary Antibody, HRP conjugate (Product # A27036, 0.4 µg/mL, 1:2500 dilution). A 32 kDa band corresponding to OTX 2 was observed across cell lines tested. Known quantity of protein samples were electrophoresed using Novex® NuPAGE® 4-12% Bis-Tris gel (Product # NP0321BOX), XCell SureLock™ Electrophoresis System (Product # EI0002) and Novex® Sharp Pre-Stained Protein Standard (Product # LC5800). Resolved proteins were then transferred onto a nitrocellulose membrane with iBlot® Dry Blotting System (Product # IB21001). The membrane was probed with the relevant primary and secondary Antibody following blocking with 5% skimmed milk. Chemiluminescent detection was performed using Pierce™ ECL Western blotting Substrate (Product # 32106).



View more figures on thermofisher.cn

Immunohistochemistry (1)

Scientific reports	Year 2019
mRNA and miRNA expression profiles in an ectoderm-biased substate of human pluripotent stem cells.	
"Published figure using OTX2 recombinant monoclonal antibody (Product # 701948) in Immunofluorescence"	
Authors: Mawaribuchi S,Aiki Y,Ikeda N,Ito Y	

Immunocytochemistry (2)

iScience	Year 2022
Controlling neural territory patterning from pluripotency using a systems developmental biology approach.	Species Human
"701948 was used in Immunocytochemistry to demonstrate the importance of combinatorial control during neural induction and challenge the use of generic neural induction strategies such as dual-SMAD inhibition, when seeking to specify particular lineages from pluripotency."	
Authors: Sears KE,Gullapalli K,Trivedi D,Mihas A,Bukys MA,Jensen J	

Scientific reports	Year 2019
mRNA and miRNA expression profiles in an ectoderm-biased substate of human pluripotent stem cells.	
"Published figure using OTX2 recombinant monoclonal antibody (Product # 701948) in Immunofluorescence"	
Authors: Mawaribuchi S,Aiki Y,Ikeda N,Ito Y	

For Research Use Only. Not for use in diagnostic procedures. Not for resale without express authorization. Products are warranted to operate or perform substantially in conformance with published Product specifications in effect at the time of sale, as set forth in the Production documentation, specifications and/or accompanying package inserts ("Documentation"). No claim of suitability for use in applications regulated by FDA is made. The warranty provided herein is valid only when used by properly trained individuals. Unless otherwise stated in the Documentation, this warranty is limited to one year from date of shipment when the Product is subjected to normal, proper and intended usage. This warranty does not extend to anyone other than the Buyer. Any model or sample furnished to Buyer is merely illustrative of the general type and quality of goods and does not represent that any Product will conform to such model or sample. NO OTHER WARRANTIES, EXPRESS OR IMPLIED, ARE GRANTED INCLUDING WITHOUT LIMITATION, IMPLIED WARRANTIES OF MERCHANTABILITY, FITNESS FOR ANY PARTICULAR PURPOSE, OR NON INFRINGEMENT. BUYER'S EXCLUSIVE REMEDY FOR NON-CONFORMING PRODUCTS DURING THE WARRANTY PERIOD IS LIMITED TO REPAIR, REPLACEMENT OF OR REFUND FOR THE NON-CONFORMING PRODUCT(S) AT SELLER'S SOLE OPTION. THERE IS NO OBLIGATION TO REPAIR, REPLACE OR REFUND FOR PRODUCTS AS THE RESULT OF (I) ACCIDENT, DISASTER OR EVENT OF FORCE MAJEURE, (II) MISUSE, FAULT OR NEGLIGENCE OF OR BY BUYER, (III) USE OF THE PRODUCTS IN A MANNER FOR WHICH THEY WERE NOT DESIGNED, OR (IV) IMPROPER STORAGE AND HANDLING OF THE PRODUCTS. Unless otherwise expressly stated on the Product or in the documentation accompanying the Product, the Product is intended for research only and is not to be used for any other purpose, including without limitation, unauthorized commercial uses, in vitro diagnostic uses, ex vivo or in vivo therapeutic uses, or any type of consumption by or application to human or animals.