

ELP3 Recombinant Rabbit Monoclonal Antibody (16H4L3)

Product Details	
Size	100 µg
Species Reactivity	Human
Host/Isotype	Rabbit / IgG
Expression system	Expi293
Class	Recombinant Monoclonal
Type	Antibody
Clone	16H4L3
Conjugate	Unconjugated
Immunogen	Peptides corresponding to human ELP3 [1) aa120-aa139 2) aa28-aa45]
Form	Liquid
Concentration	0.5 mg/mL
Purification	Protein A
Storage buffer	PBS, pH 7.4
Contains	0.09% sodium azide
Storage conditions	Store at 4°C short term. For long term storage, store at -20°C, avoiding freeze/thaw cycles.
RRID	AB_2734807

Applications	Tested Dilution	Publications
Immunocytochemistry (ICC/IF)	1:100	-

Product Specific Information

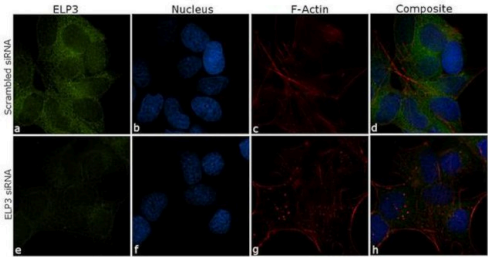
This antibody is predicted to react with Monkey, Pig,Horse, Bovine.

Recombinant rabbit monoclonal antibodies are produced using in vitro expression systems. The expression systems are developed by cloning in the specific antibody DNA sequences from immunoreactive rabbits. Then, individual clones are screened to select the best candidates for production. The advantages of using recombinant rabbit monoclonal antibodies include: better specificity and sensitivity, lot-to-lot consistency, animal origin-free formulations, and broader immunoreactivity to diverse targets due to larger rabbit immune repertoire.

Product Images For ELP3 Recombinant Rabbit Monoclonal Antibody (16H4L3)

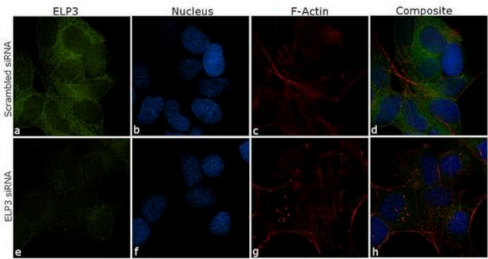
ELP3 Antibody (703222) in ICC/IF

Knockdown of ELP3 was achieved by transfecting SH-SY5Y cells with ELP3 specific siRNA (Silencer® select product # s30262, s30264). Immunofluorescence analysis was performed on SH-SY5Y cells transfected with ELP3 specific siRNA (panel e-h) or non-specific scrambled siRNA (panel a-d). Cells were fixed, permeabilized and labelled with Anti-ELP3 Recombinant Rabbit Monoclonal Antibody (Product # 703222, 1:100), followed by Goat anti-Rabbit IgG (Heavy Chain) Superclonal™ Secondary Antibody, Alexa Fluor® 488 conjugate (Product # A27034, 1:2000). Nuclei (blue) were stained using SlowFade® Gold Antifade Mountant with DAPI (Product # S36938), and Rhodamine Phalloidin (Product # R415, 1:300) was used for cytoskeletal F-actin (red) staining. Loss of signal was observed upon siRNA-mediated knockdown (panel e-h) confirming specificity of the antibody to ELP3 (green). The images were captured at 60X magnification.



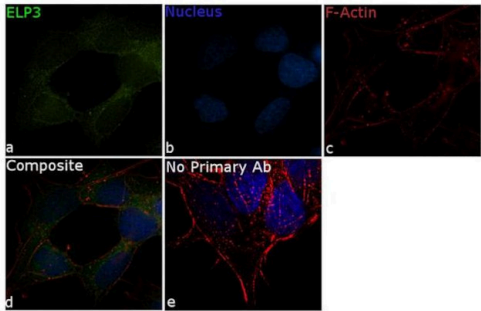
ELP3 Antibody (703222)

Antibody specificity was demonstrated by siRNA-mediated knockdown of target protein. SH-SY5Y cells were transfected with ELP3 siRNA and decrease in signal intensity was observed in immunofluorescence application using Anti-ELP3 Recombinant Rabbit Monoclonal Antibody (Product # 703222). {KD}



ELP3 Antibody (703222) in ICC/IF

For immunofluorescence analysis, SH-SY5Y cells were fixed and permeabilized for detection of endogenous ELP3 using Anti-ELP3 Recombinant Rabbit Monoclonal Antibody (Product # 703222, 1:100) and labeled with Goat anti-Rabbit IgG (Heavy Chain) Superclonal™ Secondary Antibody, Alexa Fluor® 488 conjugate (Product # A27034, 1:2000). Panel a) shows representative cells that were stained for detection and localization of ELP3 protein (green), panel b) is stained for nuclei (blue) using SlowFade® Gold Antifade Mountant with DAPI (Product # S36938). Panel c) represents cytoskeletal F-actin staining using Rhodamine Phalloidin (Product # R415, 1:300). Panel d) is a composite image of panels a, b and c clearly demonstrating cytoplasmic localization of ELP3. Panel e) represents control cells without primary antibody to assess background. The images were captured at 60X magnification.



For Research Use Only. Not for use in diagnostic procedures. Not for resale without express authorization. Products are warranted to operate or perform substantially in conformance with published Product specifications in effect at the time of sale, as set forth in the Production documentation, specifications and/or accompanying package inserts ("Documentation"). No claim of suitability for use in applications regulated by FDA is made. The warranty provided herein is valid only when used by properly trained individuals. Unless otherwise stated in the Documentation, this warranty is limited to one year from date of shipment when the Product is subjected to normal, proper and intended usage. This warranty does not extend to anyone other than the Buyer. Any model or sample furnished to Buyer is merely illustrative of the general type and quality of goods and does not represent that any Product will conform to such model or sample. NO OTHER WARRANTIES, EXPRESS OR IMPLIED, ARE GRANTED INCLUDING WITHOUT LIMITATION, IMPLIED WARRANTIES OF MERCHANTABILITY, FITNESS FOR ANY PARTICULAR PURPOSE, OR NON INFRINGEMENT. BUYER'S EXCLUSIVE REMEDY FOR NON-CONFORMING PRODUCTS DURING THE WARRANTY PERIOD IS LIMITED TO REPAIR, REPLACEMENT OF OR REFUND FOR THE NON-CONFORMING PRODUCT(S) AT SELLER'S SOLE OPTION. THERE IS NO OBLIGATION TO REPAIR, REPLACE OR REFUND FOR PRODUCTS AS THE RESULT OF (I) ACCIDENT, DISASTER OR EVENT OF FORCE MAJEURE, (II) MISUSE, FAULT OR NEGLIGENCE OF OR BY BUYER, (III) USE OF THE PRODUCTS IN A MANNER FOR WHICH THEY WERE NOT DESIGNED, OR (IV) IMPROPER STORAGE AND HANDLING OF THE PRODUCTS. Unless otherwise expressly stated on the Product or in the documentation accompanying the Product, the Product is intended for research only and is not to be used for any other purpose, including without limitation, unauthorized commercial uses, in vitro diagnostic uses, ex vivo or in vivo therapeutic uses, or any type of consumption by or application to human or animals.