

Phospho-STAT5 alpha (Tyr694) Recombinant Polyclonal Antibody (6HCLC)

Product Details	
Size	100 µg
Species Reactivity	Human
Host/Isotype	Rabbit / IgG
Expression system	Expi293
Class	Recombinant Polyclonal
Type	Antibody
Clone	6HCLC
Conjugate	Unconjugated
Immunogen	Peptide corresponding to amino acids 688-698 of human STAT5 alpha
Form	Liquid
Concentration	0.5 mg/mL
Purification	Protein A
Storage buffer	PBS
Contains	0.09% sodium azide
Storage conditions	Store at 4°C short term. For long term storage, store at -20°C, avoiding freeze/thaw cycles.
RRID	AB_2532558

Applications	Tested Dilution	Publications
Western Blot (WB)	2-5 µg/mL	-
Immunohistochemistry (Paraffin) (IHC (P))	1:10-1:100	-
ChIP assay (ChIP)	1-5 µg	-

Product Specific Information

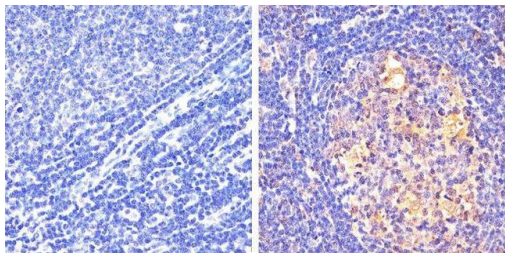
This antibody is predicted to react with mouse, rat and non-human primate based on sequence homology.

Recombinant rabbit polyclonal antibodies are unique offerings from Thermo Fisher Scientific. They are comprised of a selection of multiple different recombinant monoclonal antibodies, providing the best of both worlds - the sensitivity of polyclonal antibodies with the specificity of monoclonal antibodies - all delivered with the consistency only found in a recombinant antibody. While functionally the same as a polyclonal antibody - recognizing multiple epitope sites on the target and producing higher detection sensitivity for low abundance targets - a recombinant rabbit polyclonal antibody has a known mixture of light and heavy chains. The exact population can be produced in every lot, circumventing the biological variability typically associated with polyclonal antibody production.

Product Images For Phospho-STAT5 alpha (Tyr694) Recombinant Polyclonal Antibody (6HCLC)

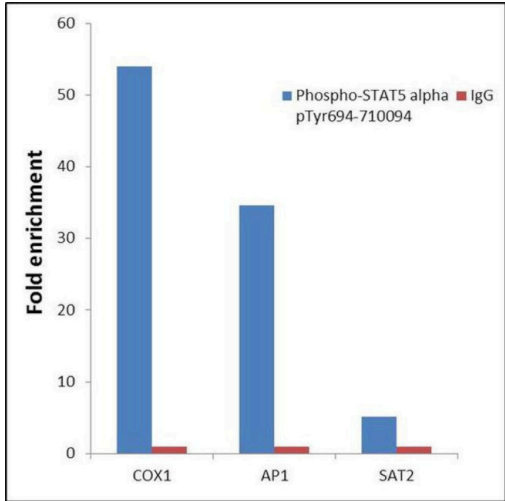
Phospho-STAT5 alpha (Tyr694) Antibody (710094) in IHC (P)

Immunohistochemistry analysis of STAT5 Alpha (pY694) showing staining in the cytoplasm and nucleus of paraffin-embedded human diffuse large B cell lymphoma (right) compared to a negative control without primary antibody (left). To expose target proteins, antigen retrieval was performed using 10mM sodium citrate (pH 6.0), microwaved for 8-15 min. Following antigen retrieval, tissues were blocked in 3% H2O2-methanol for 15 min at room temperature, washed with ddH2O and PBS, and then probed with a STAT5 Alpha (pY694) Recombinant Rabbit Polyclonal Antibody, (clone 6HCLC) (Product # 710094) diluted in 3% BSA-PBS at a dilution of 1:20 overnight at 4°C in a humidified chamber. Tissues were washed extensively in PBST and detection was performed using an HRP-conjugated secondary antibody followed by colorimetric detection using a DAB kit. Tissues were counterstained with hematoxylin and dehydrated with ethanol and xylene to prep for mounting.



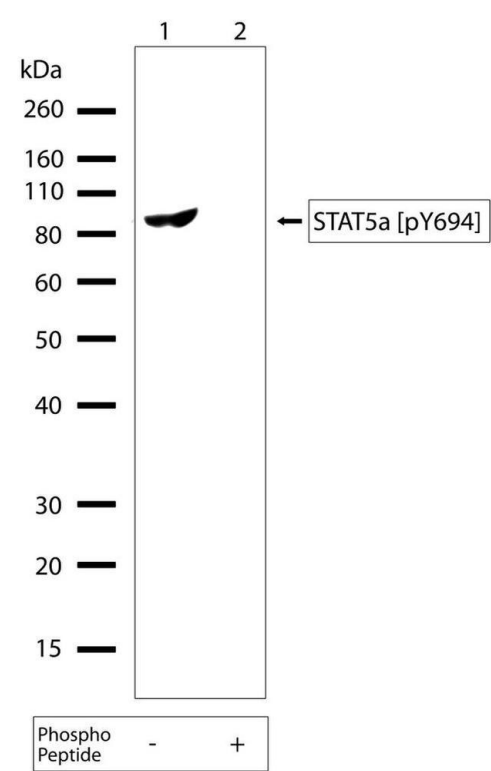
Phospho-STAT5 alpha (Tyr694) Antibody (710094)

Antibody specificity was demonstrated through detection of enrichment of the target protein at specific gene loci. Chromatin Immunoprecipitation (ChIP) was performed using STAT5A [pY694] Recombinant Rabbit Polyclonal Antibody (Product # 710094) with relevant positive and negative target genes/ binding sites. {RE}



Phospho-STAT5 alpha (Tyr694) Antibody (710094) in WB

Western blot analysis of Phospho-STAT5 alpha pTyr694 in Jurkat whole cell extracts using a Phospho-STAT5 alpha pTyr694 Recombinant Rabbit Polyclonal Antibody (Product # 710094) at a dilution of 2.5 µg/mL. To confirm specificity, competition was performed by preincubation with the phosphopeptide to inhibit antibody binding (lane 2). Results show a band at ~90kDa.



View more figures on thermofisher.cn

For Research Use Only. Not for use in diagnostic procedures. Not for resale without express authorization. Products are warranted to operate or perform substantially in conformance with published Product specifications in effect at the time of sale, as set forth in the Production documentation, specifications and/or accompanying package inserts ("Documentation"). No claim of suitability for use in applications regulated by FDA is made. The warranty provided herein is valid only when used by properly trained individuals. Unless otherwise stated in the Documentation, this warranty is limited to one year from date of shipment when the Product is subjected to normal, proper and intended usage. This warranty does not extend to anyone other than the Buyer. Any model or sample furnished to Buyer is merely illustrative of the general type and quality of goods and does not represent that any Product will conform to such model or sample. NO OTHER WARRANTIES, EXPRESS OR IMPLIED, ARE GRANTED INCLUDING WITHOUT LIMITATION, IMPLIED WARRANTIES OF MERCHANTABILITY, FITNESS FOR ANY PARTICULAR PURPOSE, OR NON INFRINGEMENT. BUYER'S EXCLUSIVE REMEDY FOR NON-CONFORMING PRODUCTS DURING THE WARRANTY PERIOD IS LIMITED TO REPAIR, REPLACEMENT OF OR REFUND FOR THE NON-CONFORMING PRODUCT(S) AT SELLER'S SOLE OPTION. THERE IS NO OBLIGATION TO REPAIR, REPLACE OR REFUND FOR PRODUCTS AS THE RESULT OF (I) ACCIDENT, DISASTER OR EVENT OF FORCE MAJEURE, (II) MISUSE, FAULT OR NEGLIGENCE OF OR BY BUYER, (III) USE OF THE PRODUCTS IN A MANNER FOR WHICH THEY WERE NOT DESIGNED, OR (IV) IMPROPER STORAGE AND HANDLING OF THE PRODUCTS. Unless otherwise expressly stated on the Product or in the documentation accompanying the Product, the Product is intended for research only and is not to be used for any other purpose, including without limitation, unauthorized commercial uses, in vitro diagnostic uses, ex vivo or in vivo therapeutic uses, or any type of consumption by or application to human or animals.