

MCHR1 Polyclonal Antibody

Product Details	
Size	100 µg
Species Reactivity	Human
Host/Isotype	Rabbit / IgG
Class	Polyclonal
Type	Antibody
Conjugate	Unconjugated
Immunogen	Peptide corresponding to Human MCHR1 (aa 401-422)
Form	Liquid
Concentration	0.5 mg/mL
Purification	Affinity chromatography
Storage buffer	PBS, pH 7.2, with 0.1% BSA, 30% glycerol
Contains	0.09% sodium azide
Storage conditions	Store at 4°C short term. For long term storage, store at -20°C, avoiding freeze/thaw cycles.
RRID	AB_2633245

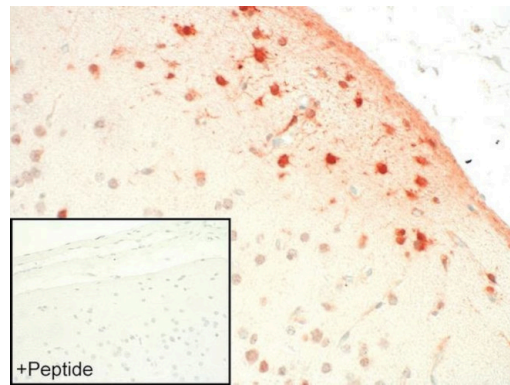
Applications	Tested Dilution	Publications
Western Blot (WB)	1-2 µg/mL	-
Immunohistochemistry (IHC)	2 µg/mL	-
Immunocytochemistry (ICC/IF)	1-2 µg/mL	-

Product Specific Information

These Polyclonal antibodies are of rabbit origin developed by immunizing animals with proteins or peptides. The polyclonal antibody is purified by affinity purification from the rabbit sera generated after immunizing the rabbits with a specific type of protein or peptide. The purified antibody is tested for its functionality in various relevant research applications. The antibody is developed for Research Use Only and is non-hazardous or non-infectious in nature.

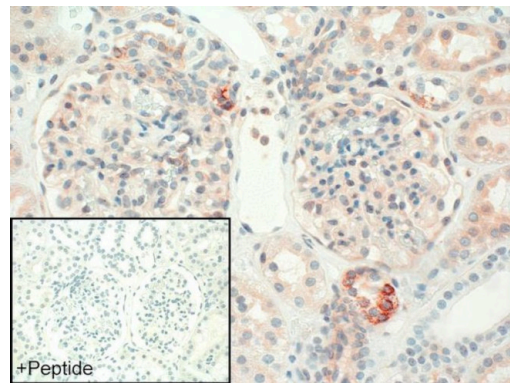
This antibody is predicted to react with Monkey, Mouse and Rabbit.

Product Images For MCHR1 Polyclonal Antibody



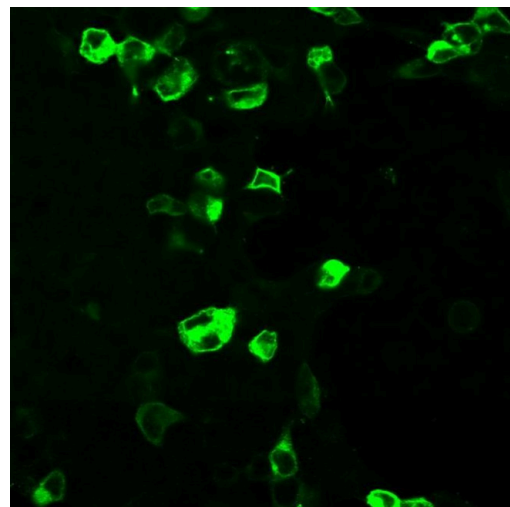
MCHR1 Antibody (720294) in IHC

Sections of human cerebral cortex were dewaxed, microwaved in citric acid and incubated with Anti-Melanin concentrating hormone receptor 1/MCHR1 Rabbit Polyclonal Antibody (Product # 720294 at a concentration of 2 µg/mL). Sections were then sequentially treated with biotinylated anti-rabbit IgG and AB solution. Sections were then developed in AEC and lightly counterstained with hematoxylin. Inset, for adsorption controls the antibody was incubated with 10 µg /mL of the peptide used for immunizations (+ Peptide). Note, staining is completely neutralized by preincubation of the antibody with its immunizing peptide.



MCHR1 Antibody (720294) in IHC

Sections of human kidney were dewaxed, microwaved in citric acid and incubated with Anti-Melanin concentrating hormone receptor 1 / MCHR1 RABBIT Polyclonal Antibody (Product # 720294 at a concentration of 2 µg/mL). Sections were then sequentially treated with biotinylated anti-rabbit IgG and AB solution. Sections were then developed in AEC and lightly counterstained with hematoxylin. Inset, for adsorption controls the antibody was incubated with 10 µg /mL of the peptide used for immunizations (+ Peptide). Note, staining is completely neutralized by preincubation of the antibody with its immunizing peptide.



MCHR1 Antibody (720294) in ICC/IF

HEK 293 cells were grown on poly-L-lysine-coated coverslips overnight. Cells were then transiently transfected with Melanin concentrating hormone receptor 1 /MCHR1. After 24 h, cells were fixed with 4% paraformaldehyde and 0.2% picric acid in phosphate buffer (pH 6.9) for 30 min at room temperature and washed several times with phosphate buffer. Specimens were permeabilized with ice-cold methanol and then incubated with Anti-Melanin concentrating hormone receptor 1 /MCHR1 RABBIT Polyclonal Antibody (Product # 720294 at a concentration of 2 µg /mL). Cells were then incubated with Alexa488-conjugated secondary antibody for 2 h at room temperature, mounted and examined using a laser scanning confocal microscope. Note, strong staining of transfected cells and no staining of adjacent non-transfected cells.

View more figures on thermofisher.cn

For Research Use Only. Not for use in diagnostic procedures. Not for resale without express authorization. Products are warranted to operate or perform substantially in conformance with published Product specifications in effect at the time of sale, as set forth in the Production documentation, specifications and/or accompanying package inserts ("Documentation"). No claim of suitability for use in applications regulated by FDA is made. The warranty provided herein is valid only when used by properly trained individuals. Unless otherwise stated in the Documentation, this warranty is limited to one year from date of shipment when the Product is subjected to normal, proper and intended usage. This warranty does not extend to anyone other than the Buyer. Any model or sample furnished to Buyer is merely illustrative of the general type and quality of goods and does not represent that any Product will conform to such model or sample. NO OTHER WARRANTIES, EXPRESS OR IMPLIED, ARE GRANTED INCLUDING WITHOUT LIMITATION, IMPLIED WARRANTIES OF MERCHANTABILITY, FITNESS FOR ANY PARTICULAR PURPOSE, OR NON-INFRINGEMENT. BUYER'S EXCLUSIVE REMEDY FOR NON-CONFORMING PRODUCTS DURING THE WARRANTY PERIOD IS LIMITED TO REPAIR, REPLACEMENT OF OR REFUND FOR THE NON-CONFORMING PRODUCT(S) AT SELLER'S SOLE OPTION. THERE IS NO OBLIGATION TO REPAIR, REPLACE OR REFUND FOR PRODUCTS AS THE RESULT OF (I) ACCIDENT, DISASTER OR EVENT OF FORCE MAJEURE, (II) MISUSE, FAULT OR NEGLIGENCE OF OR BY BUYER, (III) USE OF THE PRODUCTS IN A MANNER FOR WHICH THEY WERE NOT DESIGNED, OR (IV) IMPROPER STORAGE AND HANDLING OF THE PRODUCTS. Unless otherwise expressly stated on the Product or in the documentation accompanying the Product, the Product is intended for research only and is not to be used for any other purpose, including without limitation, unauthorized commercial uses, in vitro diagnostic uses, ex vivo or in vivo therapeutic uses, or any type of consumption by or application to human or animals.