

# beta-2 Microglobulin Monoclonal Antibody (B2M-02)

## Product Details

Size	100 µg
Species Reactivity	Human, Pig
Host/Isotype	Mouse / IgG1
Class	Monoclonal
Type	Antibody
Clone	B2M-02
Conjugate	Unconjugated
Immunogen	Purified isolated human beta- 2 microglobulin.
Form	Liquid
Concentration	1 mg/mL
Purification	Protein A
Storage buffer	PBS, pH 7.4
Contains	15mM sodium azide
Storage conditions	4° C, do not freeze
RRID	AB_1070703

Applications	Tested Dilution	Publications
Western Blot (WB)	2-4 µg/mL	-
Immunohistochemistry (Paraffin) (IHC (P))	5 µg/mL	-
Immunocytochemistry (ICC/IF)	Assay-dependent	-
Flow Cytometry (Flow)	1 µg/mL	-
ELISA (ELISA)	Assay-dependent	-

## Product Specific Information

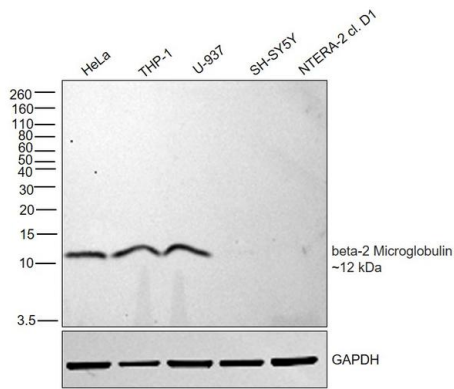
This antibody reacts with beta2-microglobulin associated with cell-surface MHC Class I molecules and other membrane antigens as well as with soluble beta2-microglobulin.

Western Blot: Both reducing and non-reducing conditions. Non-reducing conditions preferred.

Product Images For beta-2 Microglobulin Monoclonal Antibody (B2M-02)

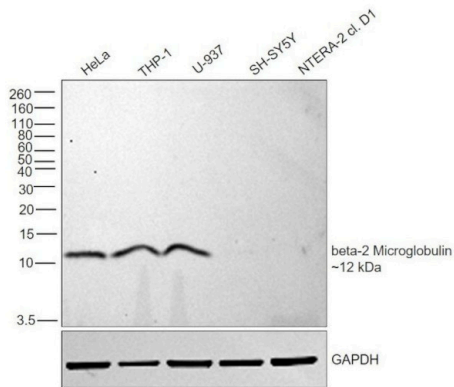
beta-2 Microglobulin Antibody (MA1-19413) in WB

Western blot was performed using Anti-beta-2 Microglobulin Monoclonal Antibody (B2M-02) (Product # MA1-19413) and a 12kDa band corresponding to beta-2 Microglobulin was observed across all cell lines tested except for SH-SY5Y and NTERA2 cl.D1, which are reported to express low levels of beta-2 Microglobulin. Whole cell extracts (30 µg lysate) of HeLa (Lane 1), THP-1 (Lane 2), U-937 (Lane 3), SH-SY5Y (Lane 4) and NTERA-2 cl.D1 (Lane 5) were electrophoresed using Novex™ 16% Tricine Protein Gel (Product # EC6695BOX). Resolved proteins were then transferred onto a Nitrocellulose membrane (Product # IB23001) by iBlot® 2 Dry Blotting System (Product # IB21001). The blot was probed with the primary antibody (3 µg/mL) and detected by chemiluminescence with Goat anti-Mouse IgG (H+L) Superclonal™ Recombinant Secondary Antibody, HRP (Product # A28177, 1:4000 dilution) using the iBright FL 1000 (Product # A32752). Chemiluminescent detection was performed using SuperSignal™ West Dura Extended Duration Substrate (Product # 34076).



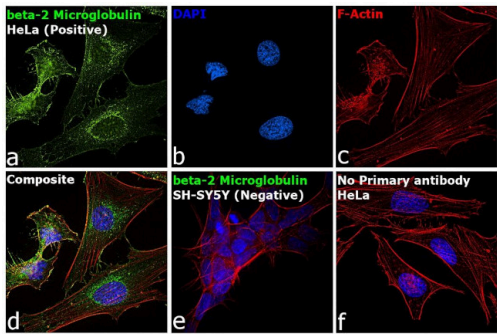
beta-2 Microglobulin Antibody (MA1-19413)

Antibody specificity was demonstrated by detection of differential basal expression of the target across cell lines tested owing to their inherent genetic constitution. Relative expression of beta-2 Microglobulin was observed in HeLa, THP-1 and U-937 cell lines but not in SH-SY5Y and NTERA2 cl.D1 using Anti-beta-2 Microglobulin Monoclonal Antibody (B2M-02) (Product # MA1-19413) in Western Blot. {RE}



beta-2 Microglobulin Antibody (MA1-19413) in ICC/IF

Immunofluorescence analysis of beta-2 Microglobulin was performed using 70% confluent log phase HeLa cells. The cells were fixed with 4% paraformaldehyde for 10 minutes, permeabilized with 0.1% Triton™ X-100 for 15 minutes, and blocked with 2% BSA for 45 minutes at room temperature. The cells were labeled with beta-2 Microglobulin Monoclonal Antibody (B2M-02) (Product # MA1-19413) at 1:100 dilution in 0.1% BSA, incubated at 4 degree celsius overnight and then labeled with Goat anti-Mouse IgG (H+L) Superclonal™ Recombinant Secondary Antibody, Alexa Fluor® 488 conjugate (Product # A28175), (1:2000 dilution), for 45 minutes at room temperature (Panel a: Green). Nuclei (Panel b: Blue) were stained with ProLong™ Diamond Antifade Mountant with DAPI (Product # P36962). F-actin (Panel c: Red) was stained with Rhodamine Phalloidin (Product # R415, 1:300). Panel d represents the merged image showing cytosolic localization. Panel e represents SH-SY5Y cells showing low/no expression of beta-2 Microglobulin. Panel f represents control cells with no primary antibody to assess background. The images were captured at 60X magnification.



View more figures on [thermofisher.cn](http://thermofisher.cn)

For Research Use Only. Not for use in diagnostic procedures. Not for resale without express authorization. Products are warranted to operate or perform substantially in conformance with published Product specifications in effect at the time of sale, as set forth in the Production documentation, specifications and/or accompanying package inserts ("Documentation"). No claim of suitability for use in applications regulated by FDA is made. The warranty provided herein is valid only when used by properly trained individuals. Unless otherwise stated in the Documentation, this warranty is limited to one year from date of shipment when the Product is subjected to normal, proper and intended usage. This warranty does not extend to anyone other than the Buyer. Any model or sample furnished to Buyer is merely illustrative of the general type and quality of goods and does not represent that any Product will conform to such model or sample. NO OTHER WARRANTIES, EXPRESS OR IMPLIED, ARE GRANTED INCLUDING WITHOUT LIMITATION, IMPLIED WARRANTIES OF MERCHANTABILITY, FITNESS FOR ANY PARTICULAR PURPOSE, OR NON INFRINGEMENT. BUYER'S EXCLUSIVE REMEDY FOR NON-CONFORMING PRODUCTS DURING THE WARRANTY PERIOD IS LIMITED TO REPAIR, REPLACEMENT OF OR REFUND FOR THE NON-CONFORMING PRODUCT(S) AT SELLER'S SOLE OPTION. THERE IS NO OBLIGATION TO REPAIR, REPLACE OR REFUND FOR PRODUCTS AS THE RESULT OF (i) ACCIDENT, DISASTER OR EVENT OF FORCE MAJEURE, (ii) MISUSE, FAULT OR NEGLIGENCE OF OR BY BUYER, (iii) USE OF THE PRODUCTS IN A MANNER FOR WHICH THEY WERE NOT DESIGNED, OR (iv) IMPROPER STORAGE AND HANDLING OF THE PRODUCTS. Unless otherwise expressly stated on the Product or in the documentation accompanying the Product, the Product is intended for research only and is not to be used for any other purpose, including without limitation, unauthorized commercial uses, in vitro diagnostic uses, ex vivo or in vivo therapeutic uses, or any type of consumption by or application to human or animals.