

beta Actin Loading Control Monoclonal Antibody (BA3R), DyLight™ 680

Product Details	
Size	50 µL
Species Reactivity	Dog, Chicken, Human, Mouse, Non-human primate, Rabbit, Rat
Published Species	Rat, Human
Host/Isotype	Mouse / IgG2b
Class	Monoclonal
Type	Antibody
Clone	BA3R
Conjugate	DyLight™ 680
Excitation/Emission Max	676/705 nm
Immunogen	Beta-actin N-terminal peptide.
Form	Liquid
Concentration	1 mg/mL
Purification	Protein A
Storage buffer	sodium bicarbonate with proprietary stabilizer
Contains	0.02% sodium azide
Storage conditions	4° C, do not freeze
RRID	AB_2537665

Applications	Tested Dilution	Publications
Western Blot (WB)	1 µg/mL	6 Publications

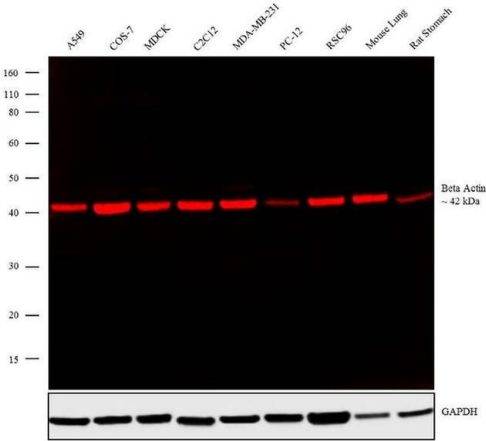
Product Specific Information

MA5-15739-D680 has been successfully used for Western blot. DyLight 680 has an excitation/emission of 692/712 nm.

Product Images For beta Actin Loading Control Monoclonal Antibody (BA3R), DyLight™ 680

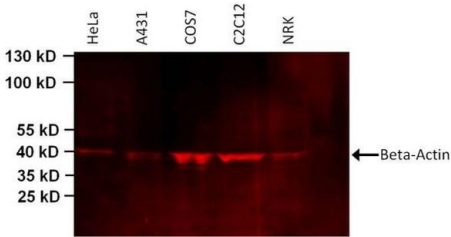
beta Actin Loading Control Antibody (MA5-15739-D680) in WB

Western blot analysis was performed on whole cell extracts (30 µg lysate) of A549 (Lane 1), COS-7 (Lane 2), MDCK (Lane 3), C2C12 (Lane 4), MDA-MB-231 (Lane 5), PC-12 (Lane 6), RSC96 (Lane 7), tissue extracts of Mouse Lung (Lane 8) and Rat stomach (Lane 9). The blot was probed with beta Actin Loading Control Monoclonal Antibody (BA3R), DyLight 680 (Product # MA5-15739-D680, 1 µg/mL). A 42 kDa band corresponding to beta Actin was observed across the cell lines and tissues tested. Known quantity of protein samples were electrophoresed using Novex® NuPAGE® 10% Bis-Tris gel (Product # NP0322BOX), XCell SureLock™ Electrophoresis System (Product # EI0002) and Novex® Sharp Pre-Stained Protein Standard (Product # LC5800). Resolved proteins were then transferred onto a nitrocellulose membrane with iBlot® 2 Dry Blotting System (Product # IB21001). The membrane was probed with the relevant primary antibody following blocking with 5 % skimmed milk. Fluorescent detection was performed using the Odyssey® Fc imaging system (Li-cor Biosciences).



beta Actin Loading Control Antibody (MA5-15739-D680) in WB

Western blot analysis of Beta-Actin was performed by loading 50 µg of various cell lysates per well onto a 4-20% Tris-HCl polyacrylamide gel. Proteins were transferred to a PVDF membrane and blocked with 5% BSA/TBST for at least 1 hour. The membrane was probed with a DyLight 680-conjugated Beta-Actin monoclonal antibody (Product # MA5-15739-D680) at a dilution of 1:1000 for 1 hour at room temperature on a rocking platform and washed in TBS-0.1% Tween-20. Detection was performed using the LI-COR Odyssey.



[View more figures on thermofisher.cn](#)

6 References

Western Blot (6)

<p>Journal of neuroinflammation</p> <p>CLEC14A deficiency exacerbates neuronal loss by increasing blood-brain barrier permeability and inflammation.</p> <p>"Published figure using beta Actin Loading Control monoclonal antibody (Product # MA5-15739-D680) in Western Blot"</p> <p>Authors: Kim Y, Lee S, Zhang H, Lee S, Kim H, Kim Y, Won MH, Kim YM, Kwon YG</p>	<p>Year</p> <p>2020</p>
<p>Cell death & disease</p> <p>Estradiol signaling mediates gender difference in visceral adiposity via autophagy.</p> <p>"Published figure using beta Actin Loading Control monoclonal antibody (Product # MA5-15739-D680) in Western Blot"</p> <p>Authors: Tao Z, Zheng LD, Smith C, Luo J, Robinson A, Almeida FA, Wang Z, Olumi AF, Liu D, Cheng Z</p>	<p>Year</p> <p>2018</p>

[View more WB references on thermofisher.cn](#)

More applications with references on thermofisher.cn

For Research Use Only. Not for use in diagnostic procedures. Not for resale without express authorization. Products are warranted to operate or perform substantially in conformance with published Product specifications in effect at the time of sale, as set forth in the Production documentation, specifications and/or accompanying package inserts ("Documentation"). No claim of suitability for use in applications regulated by FDA is made. The warranty provided herein is valid only when used by properly trained individuals. Unless otherwise stated in the Documentation, this warranty is limited to one year from date of shipment when the Product is subjected to normal, proper and intended usage. This warranty does not extend to anyone other than the Buyer. Any model or sample furnished to Buyer is merely illustrative of the general type and quality of goods and does not represent that any Product will conform to such model or sample. NO OTHER WARRANTIES, EXPRESS OR IMPLIED, ARE GRANTED INCLUDING WITHOUT LIMITATION, IMPLIED WARRANTIES OF MERCHANTABILITY, FITNESS FOR ANY PARTICULAR PURPOSE, OR NON-INFRINGEMENT. BUYER'S EXCLUSIVE REMEDY FOR NON-CONFORMING PRODUCTS DURING THE WARRANTY PERIOD IS LIMITED TO REPAIR, REPLACEMENT OF OR REFUND FOR THE NON-CONFORMING PRODUCT(S) AT SELLER'S SOLE OPTION. THERE IS NO OBLIGATION TO REPAIR, REPLACE OR REFUND FOR PRODUCTS AS THE RESULT OF (i) ACCIDENT, DISASTER OR EVENT OF FORCE MAJEURE, (ii) MISUSE, FAULT OR NEGLIGENCE OF OR BY BUYER, (iii) USE OF THE PRODUCTS IN A MANNER FOR WHICH THEY WERE NOT DESIGNED, OR (iv) IMPROPER STORAGE AND HANDLING OF THE PRODUCTS. Unless otherwise expressly stated on the Product or in the documentation accompanying the Product, the Product is intended for research only and is not to be used for any other purpose, including without limitation, unauthorized commercial uses, in vitro diagnostic uses, ex vivo or in vivo therapeutic uses, or any type of consumption by or application to human or animals.