

SLC22A2 Monoclonal Antibody (CL0631)

Product Details	
Size	100 µL
Species Reactivity	Human
Host/Isotype	Mouse / IgG2b
Class	Monoclonal
Type	Antibody
Clone	CL0631
Conjugate	Unconjugated
Immunogen	Recombinant protein corresponding to Human SLC22A2
Form	Liquid
Concentration	0.5 mg/mL
Purification	Protein A
Storage buffer	PBS, pH 7.2, with 40% glycerol
Contains	0.02% sodium azide
Storage conditions	Store at 4°C short term. For long term storage, store at -20°C, avoiding freeze/thaw cycles.
RRID	AB_2637231

Applications	Tested Dilution	Publications
Immunohistochemistry (IHC)	1:500-1:1,000	-

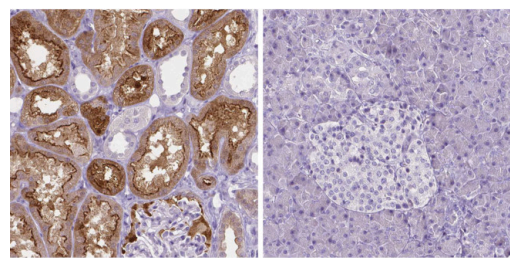
Product Specific Information

Immunogen sequence: ESPRWLISQN KNAEAMRIIK HIAKKNGKSL PASLQRLRLE EETGKKLNPS FLDLVRTPQI R

Highest antigen sequence identity to the following orthologs: Mouse - 84%, Rat - 77%.

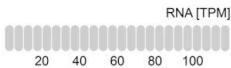
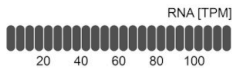
Binds to an epitope located within the peptide sequence KNAEAMRIIKHIAKK as determined by overlapping synthetic peptides.

Product Images For SLC22A2 Monoclonal Antibody (CL0631)



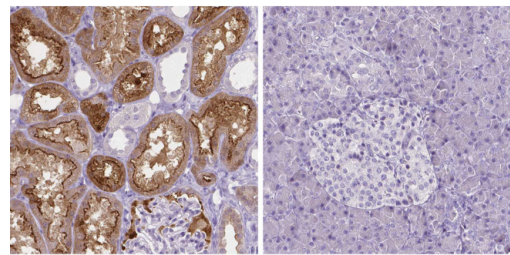
SLC22A2 in Kidney

SLC22A2 in Pancreas



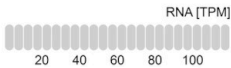
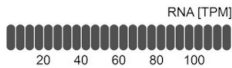
SLC22A2 Antibody (MA5-24612) in IHC

Immunohistochemical staining of SLC22A2 in human kidney and pancreas tissues using SLC22A2 Monoclonal Antibody (CL0631) (Product # MA5-24612). Corresponding SLC22A2 RNA-seq data are presented for the same tissues.



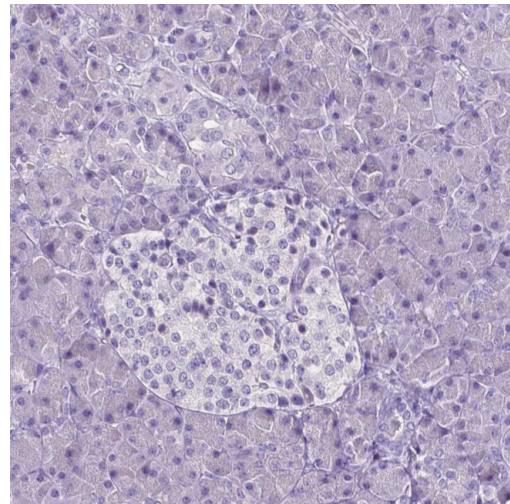
SLC22A2 in Kidney

SLC22A2 in Pancreas



SLC22A2 Antibody (MA5-24612)

Relative expression in different tissues in IHC: Detection of differential expression levels of SLC22A2 demonstrates antibody specificity. Immunohistochemical analysis of SLC22A2 using anti-SLC22A2 Monoclonal Antibody (Product # MA5-24612), shows significant staining of SLC22A2 in human kidney and shows minimal or weak staining in human pancreas tissues. The relative expression levels of SLC22A2 within each tissue is shown using RNA-Seq. {RE}



SLC22A2 Antibody (MA5-24612) in IHC

Immunohistochemical staining of SLC22A2 in human pancreas using SLC22A2 Monoclonal Antibody (CL0631) (Product # MA5-24612) shows no positivity in either exocrine or endocrine glandular cells as expected.

View more figures on thermofisher.cn

For Research Use Only. Not for use in diagnostic procedures. Not for resale without express authorization. Products are warranted to operate or perform substantially in conformance with published Product specifications in effect at the time of sale, as set forth in the Production documentation, specifications and/or accompanying package inserts ("Documentation"). No claim of suitability for use in applications regulated by FDA is made. The warranty provided herein is valid only when used by properly trained individuals. Unless otherwise stated in the Documentation, this warranty is limited to one year from date of shipment when the Product is subjected to normal, proper and intended usage. This warranty does not extend to anyone other than the Buyer. Any model or sample furnished to Buyer is merely illustrative of the general type and quality of goods and does not represent that any Product will conform to such model or sample. NO OTHER WARRANTIES, EXPRESS OR IMPLIED, ARE GRANTED INCLUDING WITHOUT LIMITATION, IMPLIED WARRANTIES OF MERCHANTABILITY, FITNESS FOR ANY PARTICULAR PURPOSE, OR NON INFRINGEMENT. BUYER'S EXCLUSIVE REMEDY FOR NON-CONFORMING PRODUCTS DURING THE WARRANTY PERIOD IS LIMITED TO REPAIR, REPLACEMENT OF OR REFUND FOR THE NON-CONFORMING PRODUCT(S) AT SELLER'S SOLE OPTION. THERE IS NO OBLIGATION TO REPAIR, REPLACE OR REFUND FOR PRODUCTS AS THE RESULT OF (I) ACCIDENT, DISASTER OR EVENT OF FORCE MAJEURE, (II) MISUSE, FAULT OR NEGLIGENCE OF OR BY BUYER, (III) USE OF THE PRODUCTS IN A MANNER FOR WHICH THEY WERE NOT DESIGNED, OR (IV) IMPROPER STORAGE AND HANDLING OF THE PRODUCTS. Unless otherwise expressly stated on the Product or in the documentation accompanying the Product, the Product is intended for research only and is not to be used for any other purpose, including without limitation, unauthorized commercial uses, in vitro diagnostic uses, ex vivo or in vivo therapeutic uses, or any type of consumption by or application to human or animals.