

# CD10 Recombinant Rabbit Monoclonal Antibody (RM337)

## Product Details

Size	100 µL
Species Reactivity	Human, Mouse, Rat
Host/Isotype	Rabbit / IgG
Expression system	HEK293 cells
Class	Recombinant Monoclonal
Type	Antibody
Clone	RM337
Conjugate	Unconjugated
Immunogen	A peptide corresponding to the N-terminus of human CD10
Form	Liquid
Concentration	0.1 mg/mL
Purification	Protein A
Storage buffer	PBS with 1% BSA, 50% glycerol
Contains	0.09% sodium azide
Storage conditions	-20°C
RRID	AB_2744947

Applications	Tested Dilution	Publications
Western Blot (WB)	1:1,000-1:2,000	-
Immunohistochemistry (Paraffin) (IHC (P))	1:200-1:500	-
Immunocytochemistry (ICC/IF)	1:100	-

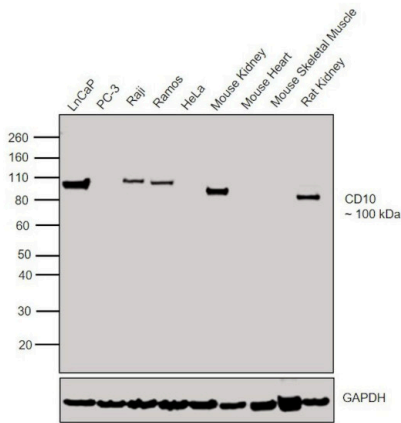
## Product Specific Information

Recombinant rabbit monoclonal antibodies are produced using in vitro expression systems. The expression systems are developed by cloning in the specific antibody DNA sequences from immunoreactive rabbits. Then, individual clones are screened to select the best candidates for production. The advantages of using recombinant rabbit monoclonal antibodies include: better specificity and sensitivity, lot-to-lot consistency, animal origin-free formulations, and broader immunoreactivity to diverse targets due to larger rabbit immune repertoire.

Product Images For CD10 Recombinant Rabbit Monoclonal Antibody (RM337)

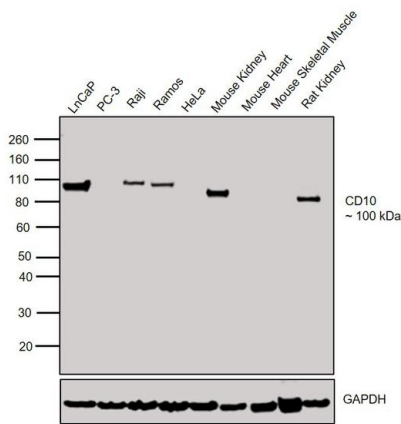
CD10 Antibody (MA5-27893)

Antibody specificity was demonstrated by detection of differential basal expression of the target across cell lines and tissues tested owing to their inherent genetic constitution. Relative expression of CD10 was observed in LNCaP (Lane 1), Raji (Lane 3), Ramos (Lane 4) cell lines that express CD10, in comparison to PC-3 (Lane 2) and HeLa (Lane 5) cell lines that are null for CD10 expression. Relative expression was also observed in Mouse Kidney (Lane 6) that expresses high levels of CD10 protein, in comparison to Mouse Heart and Mouse Skeletal Muscle (Lanes 7, 8) that express extremely low levels, using Anti-CD10 Rabbit Monoclonal Antibody (Product # MA5-27893) in Western Blot. {RE}



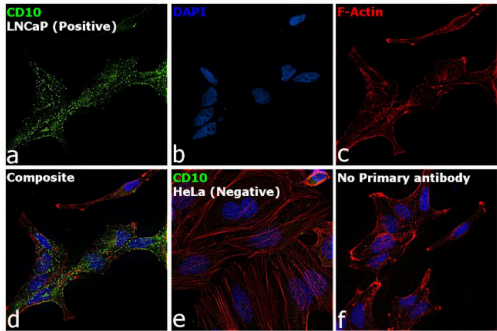
CD10 Antibody (MA5-27893) in WB

Western blot was performed using Anti-CD10 Rabbit Monoclonal Antibody (Product # MA5-27893) and a 100 kDa band corresponding to CD10 was observed in cell lines and tissues tested except for PC-3, HeLa Mouse Heart and Mouse Skeletal Muscle which are reported to be negative. Membrane enriched extracts (30 µg lysate) of LNCaP (Lane 1), PC-3 (Lane 2), Raji (Lane 3), Ramos (Lane 4), HeLa (Lane 5), Mouse Kidney (Lane 6), Mouse Heart (Lane 7), Mouse Skeletal Muscle (Lane 8) and Rat Kidney (Lane 9) were electrophoresed using Novex® NuPAGE® 4-12% Bis-Tris Protein Gel (Product # NP0322BOX). Resolved proteins were then transferred onto a nitrocellulose membrane (Product # IB23001) by iBlot® 2 Dry Blotting System (Product # IB21001). The blot was probed with the primary antibody (1:1000 dilution) and detected by chemiluminescence with Goat anti-Rabbit IgG (Heavy Chain) Superclonal™ Recombinant Secondary Antibody, HRP (Product # A27036, 1:4000 dilution) using the iBright FL 1000 (Product # A32752). Chemiluminescent detection was performed using Novex® ECL Chemiluminescent Substrate Reagent Kit (Product # WP20005).



CD10 Antibody (MA5-27893)

Antibody specificity was demonstrated by detection of differential basal expression of the target across cell lines tested owing to their inherent genetic constitution. Relative expression of CD10 was observed in LNCaP cells in plasma membrane, which is a positive model for CD10 expression, in comparison to HeLa (null for CD10 expression) using Anti-CD10 Rabbit Monoclonal Antibody (Product # MA5-27893) in immunofluorescence. {RE}



View more figures on [thermofisher.cn](https://thermofisher.cn)

For Research Use Only. Not for use in diagnostic procedures. Not for resale without express authorization. Products are warranted to operate or perform substantially in conformance with published Product specifications in effect at the time of sale, as set forth in the Production documentation, specifications and/or accompanying package inserts ("Documentation"). No claim of suitability for use in applications regulated by FDA is made. The warranty provided herein is valid only when used by properly trained individuals. Unless otherwise stated in the Documentation, this warranty is limited to one year from date of shipment when the Product is subjected to normal, proper and intended usage. This warranty does not extend to anyone other than the Buyer. Any model or sample furnished to Buyer is merely illustrative of the general type and quality of goods and does not represent that any Product will conform to such model or sample. NO OTHER WARRANTIES, EXPRESS OR IMPLIED, ARE GRANTED INCLUDING WITHOUT LIMITATION, IMPLIED WARRANTIES OF MERCHANTABILITY, FITNESS FOR ANY PARTICULAR PURPOSE, OR NON INFRINGEMENT. BUYER'S EXCLUSIVE REMEDY FOR NON-CONFORMING PRODUCTS DURING THE WARRANTY PERIOD IS LIMITED TO REPAIR, REPLACEMENT OF OR REFUND FOR THE NON-CONFORMING PRODUCT(S) AT SELLER'S SOLE OPTION. THERE IS NO OBLIGATION TO REPAIR, REPLACE OR REFUND FOR PRODUCTS AS THE RESULT OF (I) ACCIDENT, DISASTER OR EVENT OF FORCE MAJEURE, (II) MISUSE, FAULT OR NEGLIGENCE OF OR BY BUYER, (III) USE OF THE PRODUCTS IN A MANNER FOR WHICH THEY WERE NOT DESIGNED, OR (IV) IMPROPER STORAGE AND HANDLING OF THE PRODUCTS. Unless otherwise expressly stated on the Product or in the documentation accompanying the Product, the Product is intended for research only and is not to be used for any other purpose, including without limitation, unauthorized commercial uses, in vitro diagnostic uses, ex vivo or in vivo therapeutic uses, or any type of consumption by or application to human or animals.