

Syntenin 1 Monoclonal Antibody (GT1523)

Product Details	
Size	100 µL
Species Reactivity	Human, Rat
Host/Isotype	Mouse / IgG2a
Class	Monoclonal
Type	Antibody
Clone	GT1523
Conjugate	Unconjugated
Immunogen	Carrier-protein conjugated synthetic peptide encompassing a sequence within the N-terminus region of human Syntenin 1.
Form	Liquid
Concentration	1 mg/mL
Purification	Protein A
Storage buffer	PBS
Contains	no preservative
Storage conditions	Store at 4°C short term. For long term storage, store at -20°C, avoiding freeze/thaw cycles.
RRID	AB_2787199

Applications	Tested Dilution	Publications
Western Blot (WB)	1:500-1:10,000	-
Immunocytochemistry (ICC/IF)	1:100-1:1,000	-

Product Specific Information

Keep as concentrated solution.

Predicted reactivity: Mouse (100%), Rat (100%), Xenopus laevis (100%), Pig (100%), Chicken (100%), Rhesus Monkey (100%), Chimpanzee (100%), Bovine (100%).

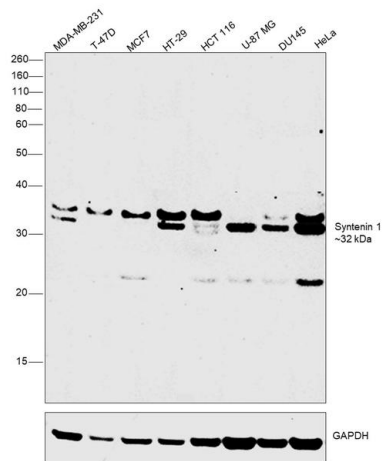
Positive Control: U87-MG, rat hippocampus.

Store product as a concentrated solution. Centrifuge briefly prior to opening the vial.

Product Images For Syntenin 1 Monoclonal Antibody (GT1523)

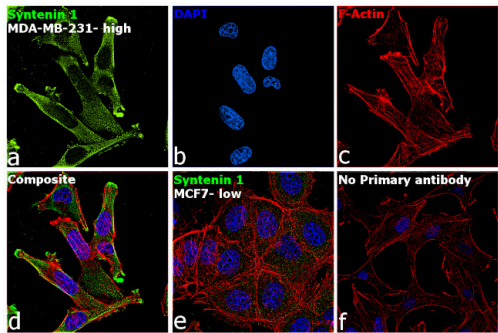
Syntenin 1 Antibody (MA5-31572) in WB

Western blot was performed using Anti-Syntenin 1 Monoclonal Antibody (GT1523) (Product # MA5-31572) and a 32kDa band corresponding to Syntenin-1 was observed across cell lines tested. Whole cell extracts (30 µg lysate) of MDA-MB-231 (Lane 1), T-47D (Lane 2), MCF7 (Lane 3), HT-29 (Lane 4), HCT 116 (Lane 5), U-87 MG (Lane 6), DU 145 (Lane 7), HeLa (Lane 8) were electrophoresed using NuPAGE™ 10% Bis-Tris Protein Gel (Product # NP0301BOX). Resolved proteins were then transferred onto a Nitrocellulose membrane (Product # IB23001) by iBlot® 2 Dry Blotting System (Product # IB21001). The blot was probed with the primary antibody (1:4000 dilution) and detected by chemiluminescence with Goat anti-Mouse IgG (H+L) Superclonal™ Recombinant Secondary Antibody, HRP (Product # A28177, 1:6000 dilution) using the iBright FL 1000 (Product # A32752). Chemiluminescent detection was performed using SuperSignal™ West Dura Extended Duration Substrate (Product # 34076). Syntenin 1 is overexpressed and promotes cell migration in metastatic human breast cancer cell lines (doi: 10.1038/sj.onc.1205514). Hence, the expression was observed to be high in MDA-MB-231 when compared to MCF7 and T-47D. In addition to this, the expression level was found to be high in HT-29 when compared to HCT 116. An uncharacterized band was observed at ~35kDa.



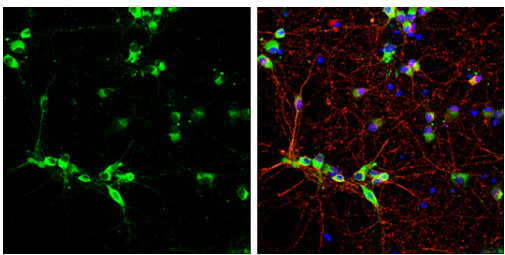
Syntenin 1 Antibody (MA5-31572) in ICC/IF

Immunofluorescence analysis of Syntenin-1 was performed using 70% confluent log phase MDA-MB-231 and MCF7 cells. The cells were fixed with 4% paraformaldehyde for 10 minutes, permeabilized with 0.1% Triton™ X-100 for 15 minutes, and blocked with 2% BSA for 45 minutes at room temperature. The cells were labeled with Syntenin 1 Monoclonal Antibody (GT1523) (Product # MA5-31572) at 1:500 dilution in 0.1% BSA, incubated at 4 degree celsius overnight and then labeled with Donkey anti-Mouse IgG (H+L) Highly Cross-Adsorbed Secondary Antibody, Alexa Fluor Plus 488 (Product # A32766), (1: 2000 dilution), for 45 minutes at room temperature (Panel a: Green). Nuclei (Panel b:Blue) were stained with ProLong™ Diamond Antifade Mountant with DAPI (Product # P36962). F-actin (Panel c: Red) was stained with Rhodamine Phalloidin (Product # R415, 1:300). Panel d represents the merged image showing cytoplasmic and focal adhesion kinase like localization. Panel e represents MCF7 cells with lower expression level of Syntenin 1 when compared to MDA-MB-231. Panel f represents control cells with no primary antibody to assess background. The images were captured at 60X magnification.



Syntenin 1 Antibody (MA5-31572) in ICC/IF

Syntenin 1 Monoclonal Antibody (GT1523) detects Syntenin 1 protein by immunofluorescent analysis. Sample: DIV10 rat E18 primary cortical neurons were fixed in 4% paraformaldehyde at RT for 15 min. Green: Syntenin 1 protein stained by Syntenin 1 Monoclonal Antibody (GT1523) (Product # MA5-31572) diluted at 1:500. Red: beta Tubulin 3/ Tuj1, stained by beta-3 Tubulin Polyclonal Antibody (Product # PA5-85639) diluted at 1:500. Blue: Fluoroshield with DAPI .



View more figures on thermofisher.cn

For Research Use Only. Not for use in diagnostic procedures. Not for resale without express authorization. Products are warranted to operate or perform substantially in conformance with published Product specifications in effect at the time of sale, as set forth in the Production documentation, specifications and/or accompanying package inserts ("Documentation"). No claim of suitability for use in applications regulated by FDA is made. The warranty provided herein is valid only when used by properly trained individuals. Unless otherwise stated in the Documentation, this warranty is limited to one year from date of shipment when the Product is subjected to normal, proper and intended usage. This warranty does not extend to anyone other than the Buyer. Any model or sample furnished to Buyer is merely illustrative of the general type and quality of goods and does not represent that any Product will conform to such model or sample. NO OTHER WARRANTIES, EXPRESS OR IMPLIED, ARE GRANTED INCLUDING WITHOUT LIMITATION, IMPLIED WARRANTIES OF MERCHANTABILITY, FITNESS FOR ANY PARTICULAR PURPOSE, OR NON INFRINGEMENT. BUYER'S EXCLUSIVE REMEDY FOR NON-CONFORMING PRODUCTS DURING THE WARRANTY PERIOD IS LIMITED TO REPAIR, REPLACEMENT OF OR REFUND FOR THE NON-CONFORMING PRODUCT(S) AT SELLER'S SOLE OPTION. THERE IS NO OBLIGATION TO REPAIR, REPLACE OR REFUND FOR PRODUCTS AS THE RESULT OF (I) ACCIDENT, DISASTER OR EVENT OF FORCE MAJEURE, (II) MISUSE, FAULT OR NEGLIGENCE OF OR BY BUYER, (III) USE OF THE PRODUCTS IN A MANNER FOR WHICH THEY WERE NOT DESIGNED, OR (IV) IMPROPER STORAGE AND HANDLING OF THE PRODUCTS. Unless otherwise expressly stated on the Product or in the documentation accompanying the Product, the Product is intended for research only and is not to be used for any other purpose, including without limitation, unauthorized commercial uses, in vitro diagnostic uses, ex vivo or in vivo therapeutic uses, or any type of consumption by or application to human or animals.