

LRP1 Recombinant Rabbit Monoclonal Antibody (ARC0275)

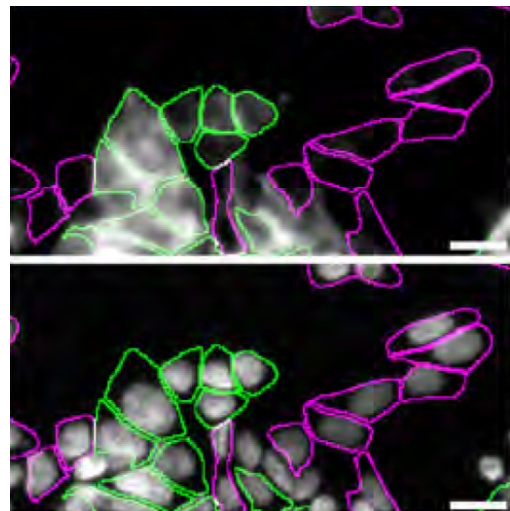
Product Details	
Size	100 µL
Species Reactivity	Human, Mouse, Rat
Host/Isotype	Rabbit / IgG
Expression system	HEK293 cells
Class	Recombinant Monoclonal
Type	Antibody
Clone	ARC0275
Conjugate	Unconjugated
Immunogen	A synthetic peptide corresponding to a sequence within amino acids 4400-4500 of human LRP1 (Q07954)
Form	Liquid
Concentration	0.3 mg/mL
Purification	Affinity Chromatography
Storage buffer	PBS, pH 7.3, with 50% glycerol, 0.05% BSA
Contains	0.02% sodium azide
Storage conditions	-20° C, Avoid Freeze/Thaw Cycles
RRID	AB_2848958

Applications	Tested Dilution	Publications
Western Blot (WB)	1:500-1:2,000	-
Immunocytochemistry (ICC/IF)	1:200	-
Immunoprecipitation (IP)	Assay-dependent	-

Product Specific Information

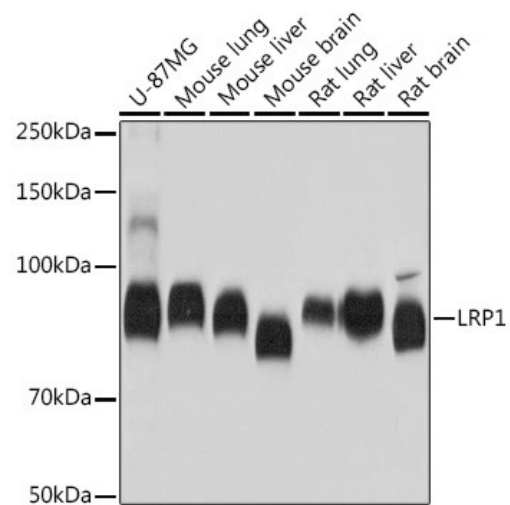
Immunogen sequence: PPHMTGPRCE EHVFSQQQPG HIASILIPLL LLLLLVLVAG VVFWYKRRVQ GAKGFQHQRM
TNGAMNVEIG NPTYKMYEGG EPDDVGGLLD ADFALDPDKP T

Product Images For LRP1 Recombinant Rabbit Monoclonal Antibody (ARC0275)



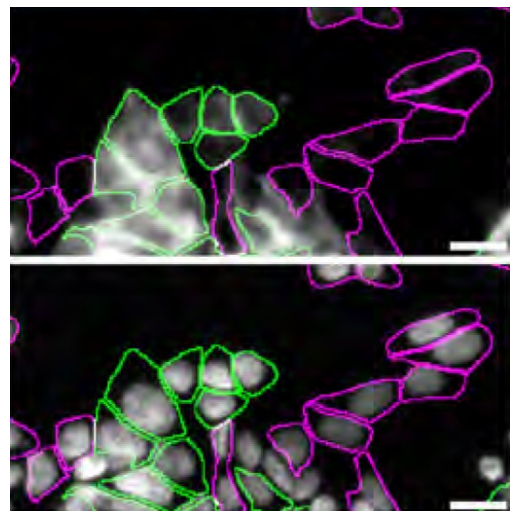
LRP1 Antibody (MA5-35053)

Antibody specificity was demonstrated by CRISPR-Cas mediated knockout (KO) of target protein. Loss of signal in immunofluorescence was observed for target protein in LRP1 KO cell line using LRP1 Recombinant Rabbit Monoclonal Antibody (ARC0275) (Product # MA5-35053). Parental cells were labeled with CellTracker™ Green CMFDA Dye (Product # C2925) and LRP1 KO with CellTracker™ Deep Red Dye (Product # C34565). Data courtesy of YCharOS Inc., an open science company with the mission of characterizing commercially available antibodies using knockout validation. {KO}



LRP1 Antibody (MA5-35053) in WB

Western blot analysis of LRP1 in extracts of various cell lines. Samples were incubated with LRP1 Monoclonal antibody (Product # MA5-35053) using a dilution of 1:5,000, followed by HRP Goat Anti-Rabbit IgG (H+L) at a dilution of 1:10,000. Lysates/proteins: 25 µg per lane. Blocking buffer: 3% nonfat dry milk in TBST. Detection: ECL Basic Kit. Exposure time: 5s.



LRP1 Antibody (MA5-35053) in ICC/IF

Immunofluorescence of LRP1 was performed using HAP1 WT and HAP1 LRP1 KO cells that were labeled with a green or a far-red fluorescent dye, respectively. WT and KO cells were mixed and plated to a 1:1 ratio on glass coverslips as a mosaic and incubated for 24 hrs. Cells were fixed in 4% PFA (in PBS) for 15 min at RT; cells were permeabilized with 0.1% Triton X-100 for 10 min at RT and blocked with PBS containing 5% BSA, 5% goat serum, and 0.01% Triton X-100 for 30 min. Cells were stained with LRP1 Recombinant Rabbit Monoclonal Antibody (ARC0275) (Product # MA5-35053) at a 1:200 dilution overnight at 4 degree celcius. Secondary antibody incubation was performed using 1 µg/mL of Goat anti-Rabbit IgG (H+L) Highly Cross-Adsorbed Secondary Antibody, Alexa Fluor™ 555 (Product # A-21429) together with DAPI for 1 hr at RT. Imaging was performed with a 20X water immersion objective. Representative images where WT and KO cells are outlined with a green (WT) or magenta (KO) line, respectively, are shown. The top and bottom panels show antibody and DAPI stainings, respectively. Scale bar = 10 µm. Data courtesy of YCharOS Inc., an open science company with the mission of characterizing commercially available antibodies using knockout validation.

View more figures on thermofisher.cn

For Research Use Only. Not for use in diagnostic procedures. Not for resale without express authorization. Products are warranted to operate or perform substantially in conformance with published Product specifications in effect at the time of sale, as set forth in the Production documentation, specifications and/or accompanying package inserts ("Documentation"). No claim of suitability for use in applications regulated by FDA is made. The warranty provided herein is valid only when used by properly trained individuals. Unless otherwise stated in the Documentation, this warranty is limited to one year from date of shipment when the Product is subjected to normal, proper and intended usage. This warranty does not extend to anyone other than the Buyer. Any model or sample furnished to Buyer is merely illustrative of the general type and quality of goods and does not represent that any Product will conform to such model or sample. NO OTHER WARRANTIES, EXPRESS OR IMPLIED, ARE GRANTED INCLUDING WITHOUT LIMITATION, IMPLIED WARRANTIES OF MERCHANTABILITY, FITNESS FOR ANY PARTICULAR PURPOSE, OR NON INFRINGEMENT. BUYER'S EXCLUSIVE REMEDY FOR NON-CONFORMING PRODUCTS DURING THE WARRANTY PERIOD IS LIMITED TO REPAIR, REPLACEMENT OF OR REFUND FOR THE NON-CONFORMING PRODUCT(S) AT SELLER'S SOLE OPTION. THERE IS NO OBLIGATION TO REPAIR, REPLACE OR REFUND FOR PRODUCTS AS THE RESULT OF (I) ACCIDENT, DISASTER OR EVENT OF FORCE MAJEURE, (II) MISUSE, FAULT OR NEGLIGENCE OF OR BY BUYER, (III) USE OF THE PRODUCTS IN A MANNER FOR WHICH THEY WERE NOT DESIGNED, OR (IV) IMPROPER STORAGE AND HANDLING OF THE PRODUCTS. Unless otherwise expressly stated on the Product or in the documentation accompanying the Product, the Product is intended for research only and is not to be used for any other purpose, including without limitation, unauthorized commercial uses, in vitro diagnostic uses, ex vivo or in vivo therapeutic uses, or any type of consumption by or application to human or animals.