

# gamma Adaptin Recombinant Rabbit Monoclonal Antibody (ARC2440)

Product Details	
Size	100 µL
Species Reactivity	Human, Mouse, Rat
Host/Isotype	Rabbit / IgG
Expression system	HEK293 cells
Class	Recombinant Monoclonal
Type	Antibody
Clone	ARC2440
Conjugate	Unconjugated
Immunogen	A synthetic peptide corresponding to a sequence within amino acids 723-822 of human AP1G1 (O43747)
Form	Liquid
Concentration	1 mg/mL
Purification	Affinity chromatography
Storage buffer	PBS, pH 7.3, with 50% glycerol, 0.05% BSA
Contains	0.02% sodium azide
Storage conditions	-20° C, Avoid Freeze/Thaw Cycles
RRID	AB_2897816

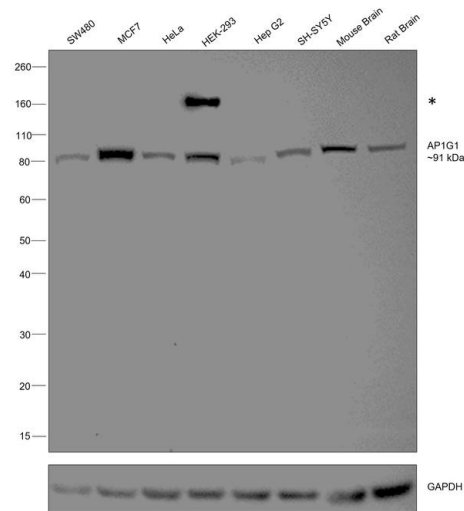
Applications	Tested Dilution	Publications
Western Blot (WB)	1:500-1:2,000	-
Immunohistochemistry (Paraffin) (IHC (P))	1:50-1:200	-
Immunocytochemistry (ICC/IF)	1:100	-

## Product Specific Information

Positive Samples: HeLa, 293T, HepG2, Mouse liver, Mouse brain, Rat liver, Rat brain

Immunogen sequence: RSNTNPSVTV ITIQASNSTE LDMTDFVFQA AVPKTFQLQL LSPSSSIVPA FNTGTITQVI  
KVLNPQKQQL RMRIKLTYNH KGSAMQDLAE VNNFPPQSWQ

Product Images For gamma Adaptin Recombinant Rabbit Monoclonal Antibody (ARC2440)

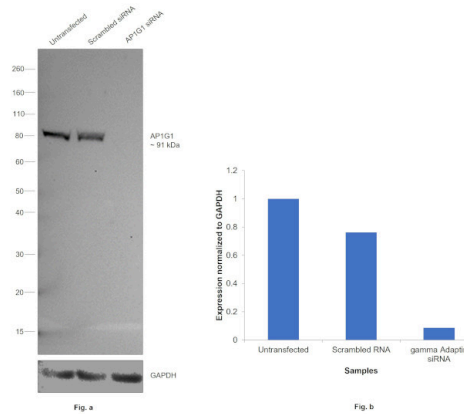


gamma Adaptin Antibody (MA5-37896) in WB

Western blot was performed using Anti-gamma Adaptin Recombinant Rabbit Monoclonal Antibody (ARC2440) (Product # MA5-37896) and a ~91 kDa band corresponding to AP1G1 was observed across all cell and tissue lysates tested. Whole cell extracts (30 µg lysate) of SW480 (Lane 1), MCF7 (Lane 2), HeLa (Lane 3), HEK-293 (Lane 4), Hep G2 (Lane 5), SH-SY5Y (Lane 6), Mouse Brain (Lane 7), Rat Brain (Lane 8) were electrophoresed using NuPAGE™ 4-12% Bis-Tris Protein Gel (Product # NP0322BOX). Resolved proteins were then transferred onto a nitrocellulose membrane (Product # IB23001) by iBlot® 2 Dry Blotting System (Product # IB21001). The blot was probed with the primary antibody (1:1000 dilution) and detected by chemiluminescence with Goat anti-Rabbit IgG (Heavy Chain) Superclonal™ Recombinant Secondary Antibody, HRP (Product # A27036, 1:20000 dilution) using the iBright™ FL1500 Imaging System (Product # A44115). Chemiluminescent detection was performed using SuperSignal™ West Pico PLUS Chemiluminescent Substrate (Product # 34580). An uncharacterized band (\*) was observed at ~200 kDa in HEK-293 lysate.

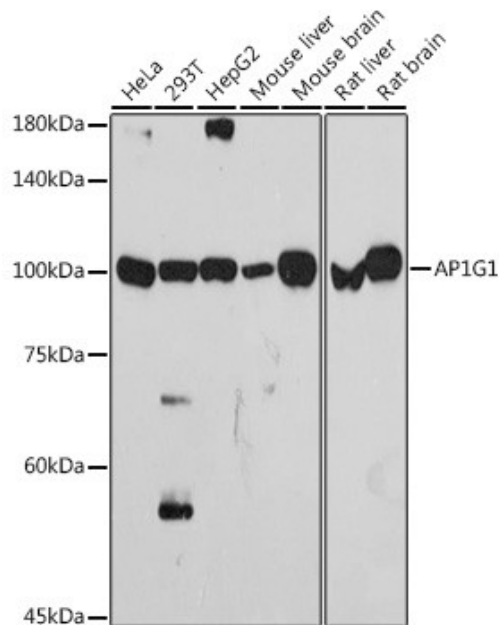
gamma Adaptin Antibody (MA5-37896)

Antibody specificity was demonstrated by siRNA mediated knockdown of target protein. HCT 116 cells were transfected with AA409002; adapter-related protein complex 1 subunit gamma-1; adaptor protein complex AP-1 gamma 1 subunit; adaptor protein complex AP-1 subunit gamma-1; adaptor protein complex AP-1, gamma 1 subunit; adaptor related protein complex 1 gamma 1 subunit; adaptor related protein complex 1 subunit gamma 1; adaptor-related protein complex 1 gamma 1 subunit; adaptor-related protein complex 1 subunit gamma-1; adaptor-related protein complex 1, gamma 1 subunit; ADTG; AP-1 complex subunit gamma-1; Ap1g1; AU041323; AW551707; CLAPG1; clathrin assembly protein complex 1 gamma large chain; clathrin assembly protein complex 1 gamma-1 large chain; clathrin-associated/assembly/adaptor protein, large, gamma 1; D8Etd374e; gamma adaptin; Gamma1-adaptin; gamma-adaptin; golgi adaptor HA1/AP1 adaptin gamma subunit; golgi adaptor HA1/AP1 adaptin subunit gamma-1; MGC18255; testicular tissue protein Li 21 siRNA and decrease in signal intensity was observed in Western Blot application using Anti-gamma Adaptin Recombinant Rabbit Monoclonal Antibody (ARC2440) (Product # MA5-37896). {KD}



gamma Adaptin Antibody (MA5-37896) in WB

Western blot analysis of gamma Adaptin in extracts of various cell lines. Samples were incubated with gamma Adaptin Monoclonal antibody (Product # MA5-37896) using a dilution of 1:1,000, followed by HRP Goat Anti-Rabbit IgG (H+L) at a dilution of 1:10,000. Lysates/proteins: 25 µg per lane. Blocking buffer: 3% nonfat dry milk in TBST. Detection: ECL Basic Kit. Exposure time: 90s.



View more figures on [thermofisher.cn](https://thermofisher.cn)

For Research Use Only. Not for use in diagnostic procedures. Not for resale without express authorization. Products are warranted to operate or perform substantially in conformance with published Product specifications in effect at the time of sale, as set forth in the Production documentation, specifications and/or accompanying package inserts ("Documentation"). No claim of suitability for use in applications regulated by FDA is made. The warranty provided herein is valid only when used by properly trained individuals. Unless otherwise stated in the Documentation, this warranty is limited to one year from date of shipment when the Product is subjected to normal, proper and intended usage. This warranty does not extend to anyone other than the Buyer. Any model or sample furnished to Buyer is merely illustrative of the general type and quality of goods and does not represent that any Product will conform to such model or sample. NO OTHER WARRANTIES, EXPRESS OR IMPLIED, ARE GRANTED INCLUDING WITHOUT LIMITATION, IMPLIED WARRANTIES OF MERCHANTABILITY, FITNESS FOR ANY PARTICULAR PURPOSE, OR NON INFRINGEMENT. BUYER'S EXCLUSIVE REMEDY FOR NON-CONFORMING PRODUCTS DURING THE WARRANTY PERIOD IS LIMITED TO REPAIR, REPLACEMENT OF OR REFUND FOR THE NON-CONFORMING PRODUCT(S) AT SELLER'S SOLE OPTION. THERE IS NO OBLIGATION TO REPAIR, REPLACE OR REFUND FOR PRODUCTS AS THE RESULT OF (I) ACCIDENT, DISASTER OR EVENT OF FORCE MAJEURE, (II) MISUSE, FAULT OR NEGLIGENCE OF OR BY BUYER, (III) USE OF THE PRODUCTS IN A MANNER FOR WHICH THEY WERE NOT DESIGNED, OR (IV) IMPROPER STORAGE AND HANDLING OF THE PRODUCTS. Unless otherwise expressly stated on the Product or in the documentation accompanying the Product, the Product is intended for research only and is not to be used for any other purpose, including without limitation, unauthorized commercial uses, in vitro diagnostic uses, ex vivo or in vivo therapeutic uses, or any type of consumption by or application to human or animals.