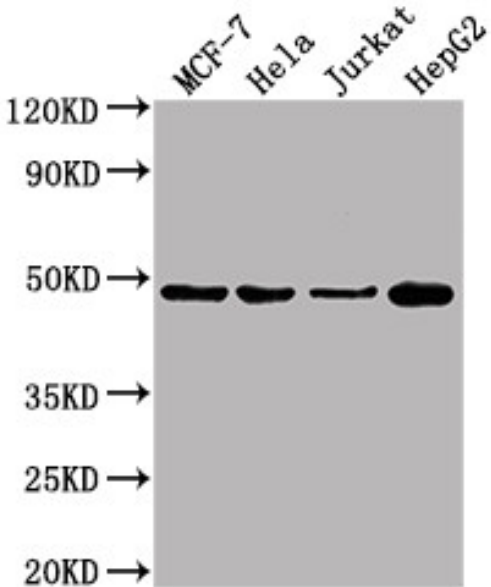


ENO1 Monoclonal Antibody (4D11F5)

Product Details	
Size	100 µL
Species Reactivity	Human, Mouse, Rabbit
Host/Isotype	Mouse / IgG1
Class	Monoclonal
Type	Antibody
Clone	4D11F5
Conjugate	Unconjugated
Immunogen	Recombinant Human Alpha-enolase protein (2-434AA)
Form	Liquid
Concentration	2.765 mg/mL
Purification	Protein G
Storage buffer	PBS, pH 7.4, with 50% glycerol
Contains	0.03% Proclin 300
Storage conditions	-20°C or -80°C if preferred

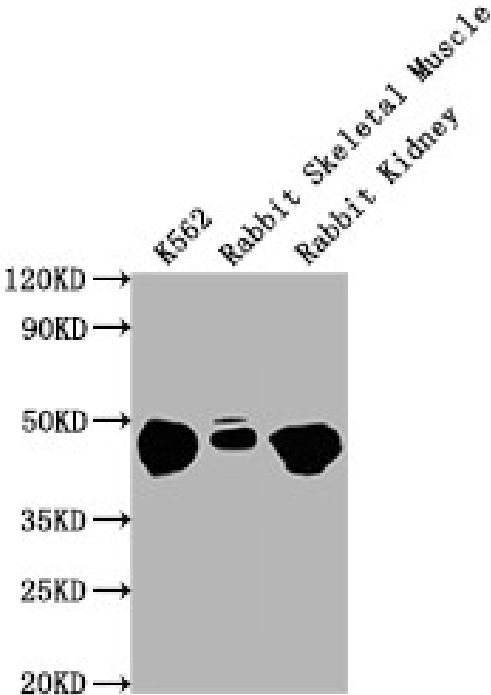
Applications	Tested Dilution	Publications
Western Blot (WB)	1:5,000-1:640,000	-
Immunocytochemistry (ICC/IF)	1:50-1:300	-
Flow Cytometry (Flow)	1:100-1:600	-
ELISA (ELISA)	Assay-dependent	-
Immunoprecipitation (IP)	1-4 µL	-

Product Images For ENO1 Monoclonal Antibody (4D11F5)



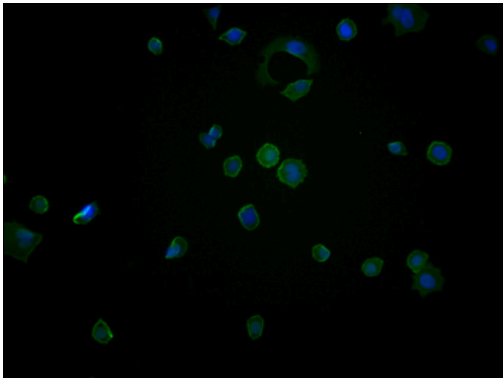
ENO1 Antibody (MA5-50266) in WB

Western blot analysis of ENO1 in MCF-7 whole cell lysate, HeLa whole cell lysate, Jurkat whole cell lysate, HepG2 whole cell lysate using a dilution of 1:10,000. Samples were incubated with ENO1 monoclonal antibody (Product # MA5-50266). Secondary: Goat polyclonal to mouse IgG at 0.261 µg/mL. Predicted band size: 47 KDa. Observed band size: 47 KDa. Exposure time: 10s.



ENO1 Antibody (MA5-50266) in WB

Western blot analysis of ENO1 in K562 whole cell lysate, Rabbit Skeletal Muscle tissue, Rabbit Kidney lysate using a dilution of 1:10,000. Samples were incubated with ENO1 monoclonal antibody (Product # MA5-50266). Secondary: Goat polyclonal to mouse IgG at 0.261 µg/mL. Predicted band size: 47 KDa. Observed band size: 47 KDa. Exposure time: 1 min.



ENO1 Antibody (MA5-50266) in ICC/IF

Immunocytochemistry analysis of MCF-7 cells with ENO1 monoclonal antibody (Product # MA5-50266) using a dilution of 1:270 and counter-stained with DAPI. The cells were blocked in 10% normal Goat Serum and then incubated with the primary antibody overnight at 4°C. The secondary antibody was Alexa Fluor 488-conjugated AffiniPure Goat Anti-Mouse IgG (H+L).

View more figures on thermofisher.cn

For Research Use Only. Not for use in diagnostic procedures. Not for resale without express authorization. Products are warranted to operate or perform substantially in conformance with published Product specifications in effect at the time of sale, as set forth in the Production documentation, specifications and/or accompanying package inserts ("Documentation"). No claim of suitability for use in applications regulated by FDA is made. The warranty provided herein is valid only when used by properly trained individuals. Unless otherwise stated in the Documentation, this warranty is limited to one year from date of shipment when the Product is subjected to normal, proper and intended usage. This warranty does not extend to anyone other than the Buyer. Any model or sample furnished to Buyer is merely illustrative of the general type and quality of goods and does not represent that any Product will conform to such model or sample. NO OTHER WARRANTIES, EXPRESS OR IMPLIED, ARE GRANTED INCLUDING WITHOUT LIMITATION, IMPLIED WARRANTIES OF MERCHANTABILITY, FITNESS FOR ANY PARTICULAR PURPOSE, OR NON INFRINGEMENT. BUYER'S EXCLUSIVE REMEDY FOR NON-CONFORMING PRODUCTS DURING THE WARRANTY PERIOD IS LIMITED TO REPAIR, REPLACEMENT OF OR REFUND FOR THE NON-CONFORMING PRODUCT(S) AT SELLER'S SOLE OPTION. THERE IS NO OBLIGATION TO REPAIR, REPLACE OR REFUND FOR PRODUCTS AS THE RESULT OF (I) ACCIDENT, DISASTER OR EVENT OF FORCE MAJEURE, (II) MISUSE, FAULT OR NEGLIGENCE OF OR BY BUYER, (III) USE OF THE PRODUCTS IN A MANNER FOR WHICH THEY WERE NOT DESIGNED, OR (IV) IMPROPER STORAGE AND HANDLING OF THE PRODUCTS. Unless otherwise expressly stated on the Product or in the documentation accompanying the Product, the Product is intended for research only and is not to be used for any other purpose, including without limitation, unauthorized commercial uses, in vitro diagnostic uses, ex vivo or in vivo therapeutic uses, or any type of consumption by or application to human or animals.