

PSMD2 Polyclonal Antibody

Product Details

Size	100 µL
Species Reactivity	Human
Published Species	Mouse, Human
Host/Isotype	Rabbit / IgG
Class	Polyclonal
Type	Antibody
Conjugate	Unconjugated
Immunogen	Human recombinant proteasome 19S subunit S2.
Form	Liquid
Concentration	1 mg/mL
Purification	Protein G
Storage buffer	PBS with 1mg/mL BSA
Contains	0.05% sodium azide
Storage conditions	-20° C, Avoid Freeze/Thaw Cycles
RRID	AB_325947

Applications	Tested Dilution	Publications
Western Blot (WB)	1:250	3 Publications
Immunocytochemistry (ICC/IF)	1:250	-
Immunoprecipitation (IP)	Assay-dependent	1 Publication
Miscellaneous PubMed (Misc)	-	1 Publication

Product Specific Information

PA1-964 detects proteasome 19S subunit S2 from human cells.

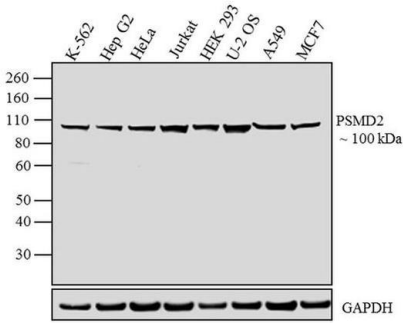
PA1-964 has been successfully used in Western blot and immunoprecipitation procedures. By Western blot, this antibody detects a 100 kDa protein representing proteasome 19S subunit S2 in HeLa cell lysate. This antibody detects, to a lesser extent an ~50-kDa protein which could correspond to subunit degradation product.

PA1-964 antigen is recombinant human proteasome 19S subunit S2.

Product Images For PSMD2 Polyclonal Antibody

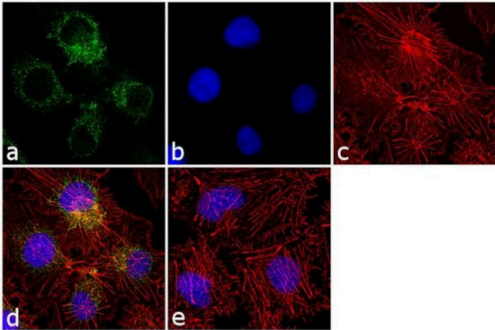
PSMD2 Antibody (PA1-964) in WB

Western blot analysis was performed on whole-cell extracts (30 µg lysate) of K-562 (Lane 1), Hep G2 (Lane 2), HeLa (Lane 3), Jurkat (Lane 4), HEK-293 (Lane 5), U-2 OS (Lane 6), A549 (Lane 7), and MCF7 (Lane 8). The blot was probed with Rabbit Anti-PSMD2 Polyclonal Antibody (Product # PA1-964, 1:500 dilution) and detected by chemiluminescence using Goat anti-Rabbit IgG (Heavy Chain) Superclonal™ Secondary Antibody, HRP conjugate (Product # A27036, 0.25 µg /mL, 1:4000 dilution). A 100 kDa band corresponding to PSMD2 was observed across the cell lines tested. Known quantity of protein samples were electrophoresed using Novex® NuPAGE® 4-12 % Bis-Tris gel (Product # NP0321BOX), XCell SureLock™ Electrophoresis System (Product # EI0002) and Novex® Sharp Pre-Stained Protein Standard (Product # LC5800). Resolved proteins were then transferred onto a nitrocellulose membrane with iBlot® 2 Dry Blotting System (Product # IB21001). The membrane was probed with the relevant primary and secondary Antibody following blocking with 5 % skimmed milk. Chemiluminescent detection was performed using Pierce™ ECL Western Blotting Substrate (Product # 32106).



PSMD2 Antibody (PA1-964) in ICC/IF

Immunofluorescence analysis of PSMD2 was performed using 70% confluent log phase Hep G2 cells. The cells were fixed with 4% paraformaldehyde for 10 minutes, permeabilized with 0.1% Triton™ X-100 for 10 minutes, and blocked with 1% BSA for 1 hour at room temperature. The cells were labeled with PSMD2 Rabbit Polyclonal Antibody (Product # PA1-964) at 1:250 dilution in 0.1% BSA and incubated for 3 hours at room temperature and then labeled with Goat anti-Rabbit IgG (Heavy Chain) Superclonal™ Secondary Antibody, Alexa Fluor® 488 conjugate (Product # A27034) at a dilution of 1:2000 for 45 minutes at room temperature (Panel a: green). Nuclei (Panel b: blue) were stained with SlowFade® Gold Antifade Mountant with DAPI (Product # S36938). F-actin (Panel c: red) was stained with Rhodamine Phalloidin (Product # R415, 1:300). Panel d represents the merged image showing cytosolic localization. Panel e shows the control without primary antibody. The images were captured at 60X magnification.



PSMD2 Antibody (PA1-964) in WB

Western blot of proteasome 19S subunit S2 on HeLa cell lysate using Product # PA1-964.

Fig. 1

105 kDa

75 kDa



View more figures on thermofisher.cn

Western Blot (3)

<p>iScience</p> <p>COP I and II dependent trafficking controls ER-associated degradation in mammalian cells.</p> <p>"PA1-964 was used in Western Blot to suggest that targeting of misfolded proteins to ERAD involves COPII-dependent transport to the ERQC and that they can be retrieved to the peripheral ER in a COPI-dependent manner."</p> <p>Authors: Ogen-Shtern N,Chang C,Saad H,Mazkereth N,Patel C,Shenkman M,Lederkremer GZ</p>	<p>Year 2023</p> <p>Species Mouse</p>
<p>Nature</p> <p>Landscape of the PARKIN-dependent ubiquitylome in response to mitochondrial depolarization.</p> <p>"PA1-964 was used in western blot to use a proteomics approach to identify the range of PARKIN substrates during mitochondrial depolarization"</p> <p>Authors: Sarraf SA,Raman M,Guarani-Pereira V,Sowa ME,Huttlin EL,Gygi SP,Harper JW</p>	<p>Year 2013</p> <p>Species Human</p>

[View more WB references on thermofisher.cn](#)

Immunoprecipitation (1)

<p>Analytical biochemistry</p> <p>The capture proteasome assay: A method to measure proteasome activity in vitro.</p> <p>"PA1-964 was used in immunoprecipitation to develop the capture proteasome assay to assess proteasome activity in vitro using cell lysates."</p> <p>Authors: Vigneron N,Abi Habib J, Van den Eynde BJ</p>	<p>Year 2015</p> <p>Species Human</p>
--	---

Miscellaneous PubMed (1)

<p>The Journal of biological chemistry</p> <p>The Proteasome Ubiquitin Receptor hRpn13 and Its Interacting Deubiquitinating Enzyme Uch37 Are Required for Proper Cell Cycle Progression.</p> <p>"PA1-964 was used in western blot to elucidate the roles of hRpn13 and Uch37 in cell cycle progression"</p> <p>Authors: Randles L,Anchoori RK,Roden RB,Walters KJ</p>	<p>Year 2016</p> <p>Species Human</p>
---	---

More applications with references on thermofisher.cn

For Research Use Only. Not for use in diagnostic procedures. Not for resale without express authorization. Products are warranted to operate or perform substantially in conformance with published Product specifications in effect at the time of sale, as set forth in the Production documentation, specifications and/or accompanying package inserts ("Documentation"). No claim of suitability for use in applications regulated by FDA is made. The warranty provided herein is valid only when used by properly trained individuals. Unless otherwise stated in the Documentation, this warranty is limited to one year from date of shipment when the Product is subjected to normal, proper and intended usage. This warranty does not extend to anyone other than the Buyer. Any model or sample furnished to Buyer is merely illustrative of the general type and quality of goods and does not represent that any Product will conform to such model or sample. NO OTHER WARRANTIES, EXPRESS OR IMPLIED, ARE GRANTED INCLUDING WITHOUT LIMITATION, IMPLIED WARRANTIES OF MERCHANTABILITY, FITNESS FOR ANY PARTICULAR PURPOSE, OR NON INFRINGEMENT. BUYER'S EXCLUSIVE REMEDY FOR NON-CONFORMING PRODUCTS DURING THE WARRANTY PERIOD IS LIMITED TO REPAIR, REPLACEMENT OF OR REFUND FOR THE NON-CONFORMING PRODUCT(S) AT SELLER'S SOLE OPTION. THERE IS NO OBLIGATION TO REPAIR, REPLACE OR REFUND FOR PRODUCTS AS THE RESULT OF (i) ACCIDENT, DISASTER OR EVENT OF FORCE MAJEURE, (ii) MISUSE, FAULT OR NEGLIGENCE OF OR BY BUYER, (iii) USE OF THE PRODUCTS IN A MANNER FOR WHICH THEY WERE NOT DESIGNED, OR (iv) IMPROPER STORAGE AND HANDLING OF THE PRODUCTS. Unless otherwise expressly stated on the Product or in the documentation accompanying the Product, the Product is intended for research only and is not to be used for any other purpose, including without limitation, unauthorized commercial uses, in vitro diagnostic uses, ex vivo or in vivo therapeutic uses, or any type of consumption by or application to human or animals.