

LSD1 Polyclonal Antibody

Product Details	
Size	100 µL
Species Reactivity	Human, Mouse, Non-human primate, Rat
Published Species	Human
Host/Isotype	Rabbit / IgG
Class	Polyclonal
Type	Antibody
Conjugate	Unconjugated
Immunogen	Synthetic peptide corresponding to residues near the amino-terminus of human LSD1 protein
Form	Liquid
Concentration	19.6 µg/mL
Purification	Antigen affinity chromatography
Storage buffer	0.01M HEPES, pH 7.5, with 0.15M NaCl, 100µg/mL BSA, 50% glycerol
Contains	no preservative
Storage conditions	-20°C
RRID	AB_10982296

Applications	Tested Dilution	Publications
Western Blot (WB)	1:1,000	2 Publications
Immunohistochemistry (IHC)	-	1 Publication
Immunocytochemistry (ICC/IF)	1:100-1:400	-
Flow Cytometry (Flow)	1:400	-
Immunoprecipitation (IP)	1:50	-
ChIP assay (ChIP)	5 µg	-

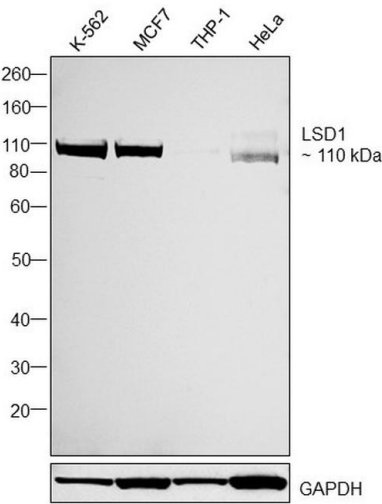
Product Specific Information

It is not recommended to aliquot this antibody.

Product Images For LSD1 Polyclonal Antibody

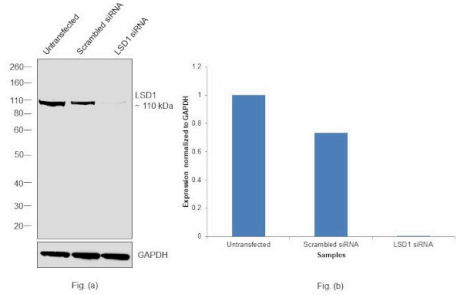
LSD1 Antibody (PA5-17361) in WB

Western blot was performed using Anti-LSD1 Polyclonal Antibody (Product # PA5-17361) and a 110 kDa band corresponding to LSD1 was observed across all tested cell lines. Nuclear enriched extracts (40 µg lysate) of K-562 (Lane 1), MCF7 (Lane 2), THP-1 (Lane 3), HeLa (Lane 4) were electrophoresed using NuPAGE™ 4-12% Bis-Tris Protein Gel (Product # NP0321BOX). Resolved proteins were then transferred onto a nitrocellulose membrane (Product # IB23001) by iBlot® 2 Dry Blotting System (Product # IB21001). The blot was probed with the primary antibody (1:1000 dilution) and detected by chemiluminescence with Goat anti-Rabbit IgG (H+L) Superclonal™ Recombinant Secondary Antibody, HRP (Product # 27036, 1:20000 dilution) using the iBright™ FL1500 Imaging System (Product # A44115). Chemiluminescent detection was performed using SuperSignal™ West Pico PLUS Chemiluminescent Substrate (Product # 34580).



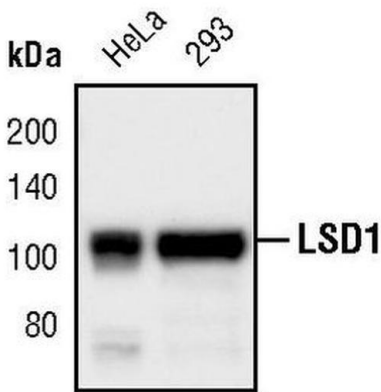
LSD1 Antibody (PA5-17361)

Antibody specificity was demonstrated by siRNA mediated knockdown of target protein. MCF7 cells were transfected with LSD1 siRNA and decrease in signal intensity was observed in Western Blot application using Anti-LSD1 Polyclonal Antibody (Product # PA5-17361). {KD}



LSD1 Antibody (PA5-17361) in WB

Western blot analysis of LSD1 in cell lysates from HeLa and 293 cell lines using LSD1 polyclonal antibody (Product # PA5-17361).



View more figures on thermofisher.cn

Western Blot (2)

Open medicine (Warsaw, Poland) CircRANBP17 modulated KDM1A to regulate neuroblastoma progression by sponging miR-27b-3p. "Published figure using LSD1 polyclonal antibody (Product # PA5-17361) in Western Blot" Authors: Zhao L,Fan J,Zhang C,Zhang Z,Dong J	Year 2023
Bioorganic & medicinal chemistry Towards the development of activity-based probes for detection of lysine-specific demethylase-1 activity. "PA517361 was used in western blot to analyze activity-based probes for the LSD1 enzyme." Authors: Ourailidou ME,Lenoci A,Zwergel C,Rotili D,Mai A,Dekker FJ	Year 2017 Species Human

Immunohistochemistry (1)

Open medicine (Warsaw, Poland) CircRANBP17 modulated KDM1A to regulate neuroblastoma progression by sponging miR-27b-3p. "Published figure using LSD1 polyclonal antibody (Product # PA5-17361) in Western Blot" Authors: Zhao L,Fan J,Zhang C,Zhang Z,Dong J	Year 2023
---	--------------

For Research Use Only. Not for use in diagnostic procedures. Not for resale without express authorization. Products are warranted to operate or perform substantially in conformance with published Product specifications in effect at the time of sale, as set forth in the Production documentation, specifications and/or accompanying package inserts ("Documentation"). No claim of suitability for use in applications regulated by FDA is made. The warranty provided herein is valid only when used by properly trained individuals. Unless otherwise stated in the Documentation, this warranty is limited to one year from date of shipment when the Product is subjected to normal, proper and intended usage. This warranty does not extend to anyone other than the Buyer. Any model or sample furnished to Buyer is merely illustrative of the general type and quality of goods and does not represent that any Product will conform to such model or sample. NO OTHER WARRANTIES, EXPRESS OR IMPLIED, ARE GRANTED INCLUDING WITHOUT LIMITATION, IMPLIED WARRANTIES OF MERCHANTABILITY, FITNESS FOR ANY PARTICULAR PURPOSE, OR NON INFRINGEMENT. BUYER'S EXCLUSIVE REMEDY FOR NON-CONFORMING PRODUCTS DURING THE WARRANTY PERIOD IS LIMITED TO REPAIR, REPLACEMENT OF OR REFUND FOR THE NON-CONFORMING PRODUCT(S) AT SELLER'S SOLE OPTION. THERE IS NO OBLIGATION TO REPAIR, REPLACE OR REFUND FOR PRODUCTS AS THE RESULT OF (i) ACCIDENT, DISASTER OR EVENT OF FORCE MAJEURE, (ii) MISUSE, FAULT OR NEGLIGENCE OF OR BY BUYER, (iii) USE OF THE PRODUCTS IN A MANNER FOR WHICH THEY WERE NOT DESIGNED, OR (iv) IMPROPER STORAGE AND HANDLING OF THE PRODUCTS. Unless otherwise expressly stated on the Product or in the documentation accompanying the Product, the Product is intended for research only and is not to be used for any other purpose, including without limitation, unauthorized commercial uses, in vitro diagnostic uses, ex vivo or in vivo therapeutic uses, or any type of consumption by or application to human or animals.