

# ENO1 Polyclonal Antibody

Product Details	
Size	100 µL
Species Reactivity	Human, Mouse
Published Species	Mouse
Host/Isotype	Rabbit / IgG
Class	Polyclonal
Type	Antibody
Conjugate	Unconjugated
Immunogen	Recombinant fragment corresponding to a region within amino acids 199 and 434 of ENO1 (Uniprot ID#P06733)
Form	Liquid
Concentration	1 mg/mL
Purification	Antigen affinity chromatography
Storage buffer	0.1M tris glycine, pH 7, with 10% glycerol
Contains	0.01% thimerosal
Storage conditions	Store at 4°C short term. For long term storage, store at -20°C, avoiding freeze/thaw cycles.
RRID	AB_11154109

Applications	Tested Dilution	Publications
Western Blot (WB)	1:500-1:20,000	2 Publications
Immunohistochemistry (IHC)	-	1 Publication
Immunohistochemistry (Paraffin) (IHC (P))	1:100-1:1,000	-
Immunocytochemistry (ICC/IF)	1:100-1:1,000	-
Dot blot (DB)	Assay-dependent	-

## Product Specific Information

Recommended positive controls: 293T, A431, H1299, HeLa, HepG2, Molt-4, Raji, mouse brain.

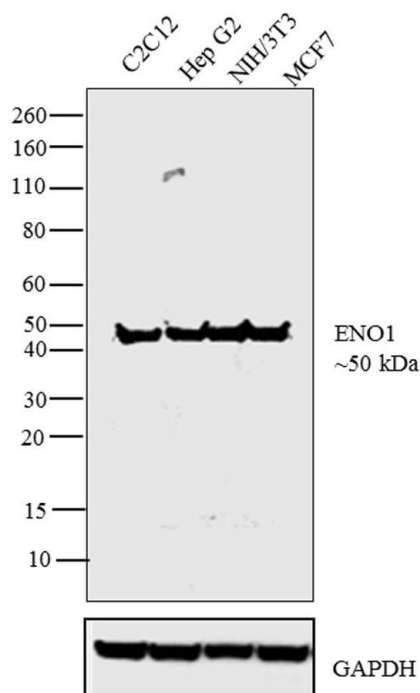
Predicted reactivity: Mouse (94%), Rat (93%), Xenopus laevis (90%), Chicken (93%), Rhesus Monkey (100%), Chimpanzee (100%), Bovine (93%), Guinea pig (95%).

Store product as a concentrated solution. Centrifuge briefly prior to opening the vial.

## Product Images For ENO1 Polyclonal Antibody

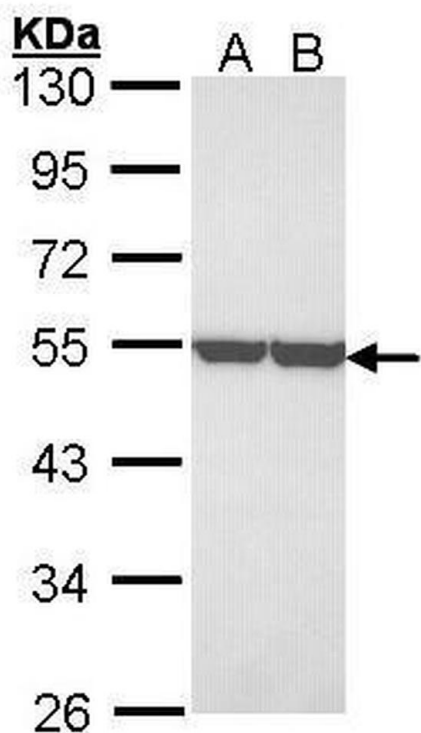
### ENO1 Antibody (PA5-21387) in WB

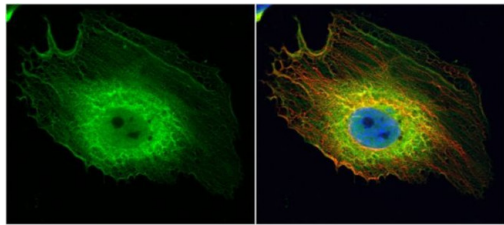
Western blot analysis was performed on whole cell extracts (30 µg lysate) of C2C12 (Lane 1), Hep G2 (Lane 2), NIH/3T3 (Lane 3) and MCF7 (Lane 4). The blot was probed with Anti-ENO1 Polyclonal Antibody (Product # PA5-21387, 1 µg/mL) and detected by chemiluminescence using Goat anti-Rabbit IgG (Heavy Chain) Superclonal™ Secondary Antibody, HRP conjugate (Product # A27036, 0.25 µg/mL, 1:4000 dilution). A 50 kDa band corresponding to ENO1 was observed across the cell lines tested.



### ENO1 Antibody (PA5-21387) in WB

Western Blot using ENO1 Polyclonal Antibody (Product # PA5-21387). Sample (30 µg of whole cell lysate). Lane A: A431. Lane B: H1299. 10% SDS PAGE. ENO1 Polyclonal Antibody (Product # PA5-21387) diluted at 1:3,000. The HRP-conjugated anti-rabbit IgG antibody was used to detect the primary antibody.





## ENO1 Antibody (PA5-21387) in ICC/IF

Immunocytochemistry-Immunofluorescence analysis of ENO1 was performed in HeLa cells fixed in 4% paraformaldehyde at RT for 15 min. Green: ENO1 Polyclonal Antibody (Product # PA5-21387) diluted at 1:200. Red: alpha Tubulin, a cytoskeleton marker. Blue: Hoechst 33342 staining.

[View more figures on thermofisher.cn](#)

## 3 References

### Western Blot (2)

PloS one

#### Proteomic analysis of the effects of aged garlic extract and its FruArg component on lipopolysaccharide-induced neuroinflammatory response in microglial cells.

"PA5-21387 was used in western blot to study the effects of aged garlic extract and its FruArg component by proteomic analysis and lipopolysaccharide-induced neuroinflammatory response in microglial cells"

Authors: Zhou H,Qu Z,Mossine VV,Nknolise DL,Li J,Chen Z,Cheng J,Greenlief CM,Mawhinney TP,Brown PN,Fritsche KL,Hannink M,Lubahn DB,Sun GY,Gu Z

Year  
2016

Species  
Mouse

Pancreas

#### Quantitative Proteomic Analysis of Differentially Expressed Protein Profiles Involved in Pancreatic Ductal Adenocarcinoma.

"Published figure using ENO1 polyclonal antibody (Product # PA5-21387) in Immunohistochemistry"

Authors: Kuo KK,Kuo CJ,Chiu CY,Liang SS,Huang CH,Chi SW,Tsai KB,Chen CY,Hsi E,Cheng KH,Chiou SH

Year  
2016

### Immunohistochemistry (1)

Pancreas

#### Quantitative Proteomic Analysis of Differentially Expressed Protein Profiles Involved in Pancreatic Ductal Adenocarcinoma.

"Published figure using ENO1 polyclonal antibody (Product # PA5-21387) in Immunohistochemistry"

Authors: Kuo KK,Kuo CJ,Chiu CY,Liang SS,Huang CH,Chi SW,Tsai KB,Chen CY,Hsi E,Cheng KH,Chiou SH

Year  
2016

For Research Use Only. Not for use in diagnostic procedures. Not for resale without express authorization. Products are warranted to operate or perform substantially in conformance with published Product specifications in effect at the time of sale, as set forth in the Production documentation, specifications and/or accompanying package inserts ("Documentation"). No claim of suitability for use in applications regulated by FDA is made. The warranty provided herein is valid only when used by properly trained individuals. Unless otherwise stated in the Documentation, this warranty is limited to one year from date of shipment when the Product is subjected to normal, proper and intended usage. This warranty does not extend to anyone other than the Buyer. Any model or sample furnished to Buyer is merely illustrative of the general type and quality of goods and does not represent that any Product will conform to such model or sample. NO OTHER WARRANTIES, EXPRESS OR IMPLIED, ARE GRANTED INCLUDING WITHOUT LIMITATION, IMPLIED WARRANTIES OF MERCHANTABILITY, FITNESS FOR ANY PARTICULAR PURPOSE, OR NON-INFRINGEMENT. BUYER'S EXCLUSIVE REMEDY FOR NON-CONFORMING PRODUCTS DURING THE WARRANTY PERIOD IS LIMITED TO REPAIR, REPLACEMENT OF OR REFUND FOR THE NON-CONFORMING PRODUCT(S) AT SELLER'S SOLE OPTION. THERE IS NO OBLIGATION TO REPAIR, REPLACE OR REFUND FOR PRODUCTS AS THE RESULT OF (I) ACCIDENT, DISASTER OR EVENT OF FORCE MAJEURE, (II) MISUSE, FAULT OR NEGLIGENCE OF OR BY BUYER, (III) USE OF THE PRODUCTS IN A MANNER FOR WHICH THEY WERE NOT DESIGNED, OR (IV) IMPROPER STORAGE AND HANDLING OF THE PRODUCTS. Unless otherwise expressly stated on the Product or in the documentation accompanying the Product, the Product is intended for research only and is not to be used for any other purpose, including without limitation, unauthorized commercial uses, in vitro diagnostic uses, ex vivo or in vivo therapeutic uses, or any type of consumption by or application to human or animals.