

alpha Actinin 2 Polyclonal Antibody

Product Details	
Size	100 µL
Species Reactivity	Human, Mouse, Pig, Rat
Published Species	Human
Host/Isotype	Rabbit / IgG
Class	Polyclonal
Type	Antibody
Conjugate	Unconjugated
Immunogen	Recombinant fragment corresponding to a region within amino acids 1 and 377 of Human alpha Actinin 2
Form	Liquid
Concentration	0.18 mg/mL
Purification	Antigen affinity chromatography
Storage buffer	PBS, pH 7, with 20% glycerol, 1% BSA
Contains	0.025% ProClin 300
Storage conditions	Store at 4°C short term. For long term storage, store at -20°C, avoiding freeze/thaw cycles.
RRID	AB_2545339

Applications	Tested Dilution	Publications
Western Blot (WB)	1:500-1:10,000	2 Publications
Immunohistochemistry (Paraffin) (IHC (P))	1:100-1:1,000	-
Immunocytochemistry (ICC/IF)	1:100-1:1,000	-

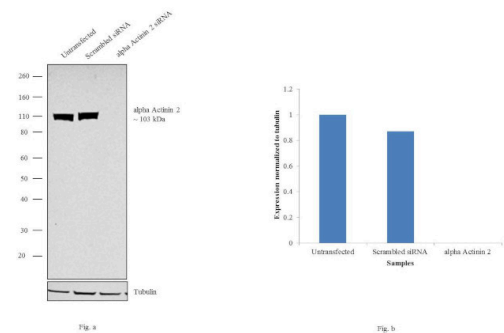
Product Specific Information

Recommended positive controls: 293T, A431, HeLa, HepG2, Neuro2A, GL261, C8D30, NIH-3T3, Rat heart.

Predicted reactivity: Mouse (100%), Rat (100%), Xenopus laevis (94%), Pig (99%), Chicken (98%), Bovine (99%).

Store product as a concentrated solution. Centrifuge briefly prior to opening the vial.

Product Images For alpha Actinin 2 Polyclonal Antibody

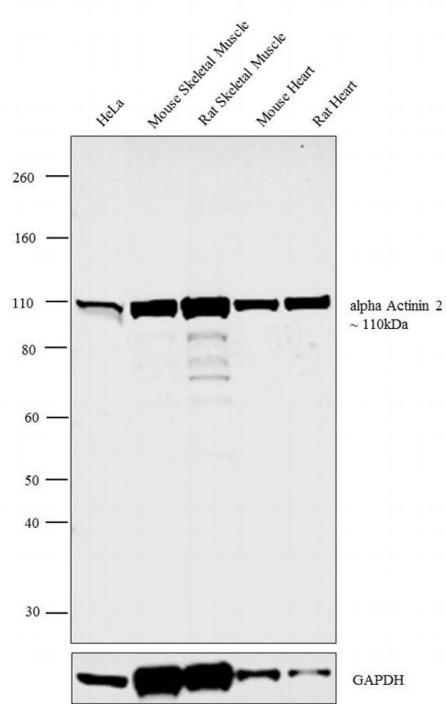


alpha Actinin 2 Antibody (PA5-27863)

Antibody specificity was demonstrated by siRNA mediated knockdown of target protein. HeLa cells were transfected with alpha Actinin 2 siRNA and reduction of signal was observed in Western Blot using alpha Actinin 2 Polyclonal Antibody (Product # PA5-27863). {KD}

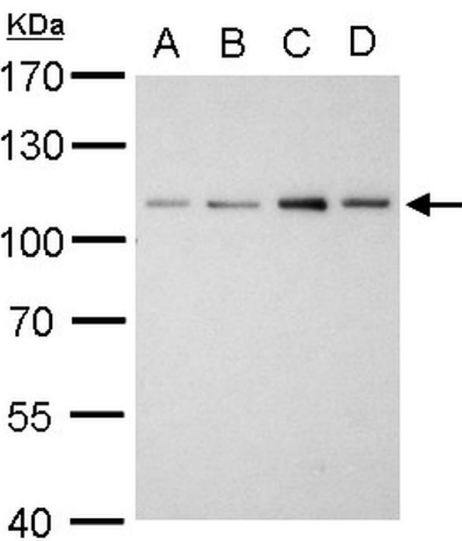
alpha Actinin 2 Antibody (PA5-27863) in WB

Western blot analysis was performed on whole cell extract (30 µg lysate) of HeLa (Lane 1), tissue extracts (30 µg lysate) of Mouse Skeletal Muscle (Lane 2), Rat Skeletal Muscle (Lane 3), Mouse Heart (Lane 4) and Rat Heart (Lane 5). The blot was probed with Anti-alpha Actinin 2 Polyclonal Antibody (Product # PA5-27863, 1:500 dilution) and detected by chemiluminescence using Goat anti-Rabbit IgG (Heavy Chain) Superclonal™ Secondary Antibody, HRP conjugate (Product # A27036, 0.25 µg/mL, 1:4000 dilution). A 110 kDa band corresponding to alpha Actinin 2 was detected across the cell line and tissues tested.



alpha Actinin 2 Antibody (PA5-27863) in WB

alpha Actinin 2 Polyclonal Antibody detects ACTN2 protein by western blot analysis. A. 30 µg Neuro2A whole cell lysate/extract. B. 30 µg GL261 whole cell lysate/extract. C. 30 µg C8D30 whole cell lysate/extract. D. 30 µg NIH-3T3 whole cell lysate/extract. 7.5% SDS-PAGE. Alpha Actinin 2 Polyclonal Antibody (Product # PA5-27863) dilution: 1:1,000. The HRP-conjugated anti-rabbit IgG antibody was used to detect the primary antibody.



View more figures on thermofisher.cn

Western Blot (2)

<p>Frontiers in genetics</p> <p>Identification of Ferroptosis-Associated Genes in Prostate Cancer by Bioinformatics Analysis.</p> <p>"PA5-27863 was used in Western Blotting to research the influence of ferroptosis on gene mutations, various cellular signaling pathways, biochemical recurrence, and drug resistance in both FPI-high and FPI-low groups."</p> <p>Authors: Wo Q,Liu Z,Hu L</p>	<p>Year 2022</p> <p>Species Human</p>
<p>Scientific reports</p> <p>Alterations in the host transcriptome in vitro following Rift Valley fever virus infection.</p> <p>"PA5-27863 was used in Western Blotting to analyze the host transcriptome in response to RVFV infection."</p> <p>Authors: Pinkham C,Dahal B,de la Fuente CL,Bracci N,Beitzel B,Lindquist M,Garrison A,Schmaljohn C,Palacios G,Narayanan A,Campbell CE,Kehn-Hall K</p>	<p>Year 2017</p> <p>Species Human</p>

For Research Use Only. Not for use in diagnostic procedures. Not for resale without express authorization. Products are warranted to operate or perform substantially in conformance with published Product specifications in effect at the time of sale, as set forth in the Production documentation, specifications and/or accompanying package inserts ("Documentation"). No claim of suitability for use in applications regulated by FDA is made. The warranty provided herein is valid only when used by properly trained individuals. Unless otherwise stated in the Documentation, this warranty is limited to one year from date of shipment when the Product is subjected to normal, proper and intended usage. This warranty does not extend to anyone other than the Buyer. Any model or sample furnished to Buyer is merely illustrative of the general type and quality of goods and does not represent that any Product will conform to such model or sample. NO OTHER WARRANTIES, EXPRESS OR IMPLIED, ARE GRANTED INCLUDING WITHOUT LIMITATION, IMPLIED WARRANTIES OF MERCHANTABILITY, FITNESS FOR ANY PARTICULAR PURPOSE, OR NON INFRINGEMENT. BUYER'S EXCLUSIVE REMEDY FOR NON-CONFORMING PRODUCTS DURING THE WARRANTY PERIOD IS LIMITED TO REPAIR, REPLACEMENT OF OR REFUND FOR THE NON-CONFORMING PRODUCT(S) AT SELLER'S SOLE OPTION. THERE IS NO OBLIGATION TO REPAIR, REPLACE OR REFUND FOR PRODUCTS AS THE RESULT OF (I) ACCIDENT, DISASTER OR EVENT OF FORCE MAJEURE, (II) MISUSE, FAULT OR NEGLIGENCE OF OR BY BUYER, (III) USE OF THE PRODUCTS IN A MANNER FOR WHICH THEY WERE NOT DESIGNED, OR (IV) IMPROPER STORAGE AND HANDLING OF THE PRODUCTS. Unless otherwise expressly stated on the Product or in the documentation accompanying the Product, the Product is intended for research only and is not to be used for any other purpose, including without limitation, unauthorized commercial uses, in vitro diagnostic uses, ex vivo or in vivo therapeutic uses, or any type of consumption by or application to human or animals.