

MTHFD2 Polyclonal Antibody

| Product Details | |
|--------------------|--|
| Size | 100 µL |
| Species Reactivity | Human |
| Published Species | Human, Mouse |
| Host/Isotype | Rabbit / IgG |
| Class | Polyclonal |
| Type | Antibody |
| Conjugate | Unconjugated |
| Immunogen | Recombinant fragment corresponding to a region within amino acids 30 and 304 of Human MTHFD2 |
| Form | Liquid |
| Concentration | 0.13 mg/mL |
| Purification | Antigen affinity chromatography |
| Storage buffer | PBS, pH 7, with 20% glycerol, 1% BSA |
| Contains | 0.025% ProClin 300 |
| Storage conditions | Store at 4°C short term. For long term storage, store at -20°C, avoiding freeze/thaw cycles. |
| RRID | AB_2545645 |

| Applications | Tested Dilution | Publications |
|---|-----------------|----------------|
| Western Blot (WB) | 1:500-1:3,000 | 2 Publications |
| Immunohistochemistry (IHC) | - | 1 Publication |
| Immunohistochemistry (Paraffin) (IHC (P)) | 1:100-1:1,000 | - |
| Immunocytochemistry (ICC/IF) | 1:100-1:1,000 | - |
| Immunoprecipitation (IP) | 1:100-1:500 | - |

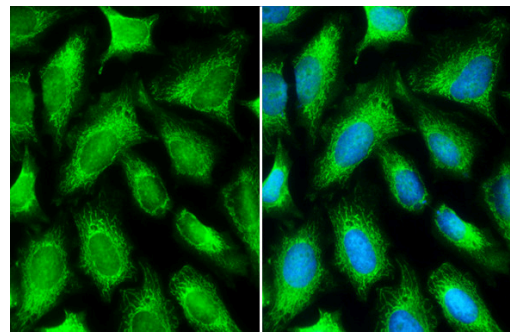
Product Specific Information

Recommended positive controls: 293T, A431, H1299, HeLa, HepG2, Molt-4, Raji, SK-N-DZ, SK-N-SH.

Predicted reactivity: Mouse (95%), Rat (93%), Zebrafish (86%), Xenopus laevis (90%), Chicken (92%), Bovine (95%).

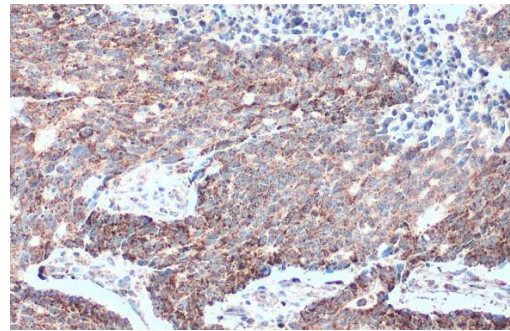
Store product as a concentrated solution. Centrifuge briefly prior to opening the vial.

Product Images For MTHFD2 Polyclonal Antibody



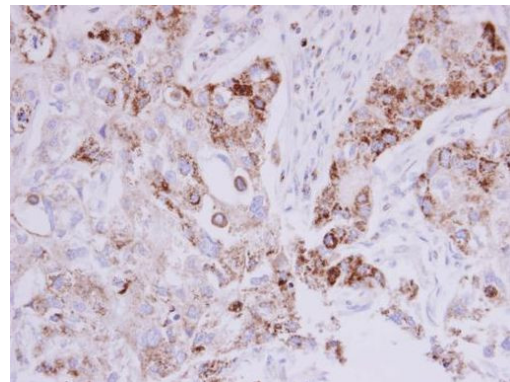
MTHFD2 Antibody (PA5-28169) in ICC/IF

MTHFD2 Polyclonal Antibody detects MTHFD2 protein at mitochondria by immunofluorescent analysis. Sample: HeLa cells were fixed in 4% paraformaldehyde at RT for 15 min. Green: MTHFD2 stained by MTHFD2 Polyclonal Antibody (Product # PA5-28169) diluted at 1:500. Blue: Fluoroshield with DAPI .



MTHFD2 Antibody (PA5-28169) in IHC (P)

MTHFD2 Polyclonal Antibody detects MTHFD2 protein at mitochondria by immunohistochemical analysis. Sample: Paraffin-embedded human colon cancer. MTHFD2 stained by MTHFD2 Polyclonal Antibody (Product # PA5-28169) diluted at 1:500. Antigen Retrieval: Citrate buffer, pH 6.0, 15 min.



MTHFD2 Antibody (PA5-28169) in IHC (P)

Immunohistochemistry (Paraffin) analysis of MTHFD2 was performed in paraffin-embedded human breast carcinoma tissue using MTHFD2 Polyclonal Antibody (Product # PA5-28169) at a dilution of 1:500.

[View more figures on thermofisher.cn](https://thermofisher.cn)

Western Blot (2)

| | |
|---|--------------------|
| Experimental and therapeutic medicine | Year 2021 |
| MTHFD2 facilitates breast cancer cell proliferation via the AKT signaling pathway. | Species Human |
| "PA5-28169 was used in Western Blot to provide an alternative theoretical foundation that could help the development of MTHFD2-targeted breast cancer treatment." | Dilution 1:1000 |
| Authors: Huang J,Qin Y,Lin C,Huang X,Zhang F | |

Immunohistochemistry (1)

| | |
|---|--------------------|
| PloS one | Year 2016 |
| Cardiac metabolic pathways affected in the mouse model of barth syndrome. | Species Mouse |
| "PA5-28169 was used in immunohistochemistry - frozen section and western blot to study the effect of Taz-knockdown on the mitochondrial processes in cardiac tissues" | Dilution 1:1000 |
| Authors: Huang Y,Powers C,Madala SK,Greis KD,Haffey WD,Towbin JA,Purevjav E,Javadov S,Strauss AW,Khuchua Z | |

For Research Use Only. Not for use in diagnostic procedures. Not for resale without express authorization. Products are warranted to operate or perform substantially in conformance with published Product specifications in effect at the time of sale, as set forth in the Production documentation, specifications and/or accompanying package inserts ("Documentation"). No claim of suitability for use in applications regulated by FDA is made. The warranty provided herein is valid only when used by properly trained individuals. Unless otherwise stated in the Documentation, this warranty is limited to one year from date of shipment when the Product is subjected to normal, proper and intended usage. This warranty does not extend to anyone other than the Buyer. Any model or sample furnished to Buyer is merely illustrative of the general type and quality of goods and does not represent that any Product will conform to such model or sample. NO OTHER WARRANTIES, EXPRESS OR IMPLIED, ARE GRANTED INCLUDING WITHOUT LIMITATION, IMPLIED WARRANTIES OF MERCHANTABILITY, FITNESS FOR ANY PARTICULAR PURPOSE, OR NON INFRINGEMENT. BUYER'S EXCLUSIVE REMEDY FOR NON-CONFORMING PRODUCTS DURING THE WARRANTY PERIOD IS LIMITED TO REPAIR, REPLACEMENT OF OR REFUND FOR THE NON-CONFORMING PRODUCT(S) AT SELLER'S SOLE OPTION. THERE IS NO OBLIGATION TO REPAIR, REPLACE OR REFUND FOR PRODUCTS AS THE RESULT OF (I) ACCIDENT, DISASTER OR EVENT OF FORCE MAJEURE, (II) MISUSE, FAULT OR NEGLIGENCE OF OR BY BUYER, (III) USE OF THE PRODUCTS IN A MANNER FOR WHICH THEY WERE NOT DESIGNED, OR (IV) IMPROPER STORAGE AND HANDLING OF THE PRODUCTS. Unless otherwise expressly stated on the Product or in the documentation accompanying the Product, the Product is intended for research only and is not to be used for any other purpose, including without limitation, unauthorized commercial uses, in vitro diagnostic uses, ex vivo or in vivo therapeutic uses, or any type of consumption by or application to human or animals.