

Folate Receptor alpha Polyclonal Antibody

Product Details

Size	100 µL
Species Reactivity	Human
Published Species	Rat, Hamster, Mouse, Human
Host/Isotype	Rabbit / IgG
Class	Polyclonal
Type	Antibody
Conjugate	Unconjugated
Immunogen	Synthetic peptide directed towards the middle region of human FOLR1
Form	Liquid
Concentration	0.5 mg/mL
Purification	Affinity Chromatography
Storage buffer	PBS with 2% sucrose
Contains	0.09% sodium azide
Storage conditions	-20° C, Avoid Freeze/Thaw Cycles
RRID	AB_2609391

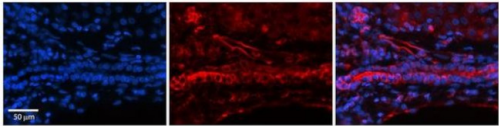
Applications	Tested Dilution	Publications
Western Blot (WB)	0.2-1 µg/mL	1 Publication
Immunohistochemistry (IHC)	-	3 Publications
Immunohistochemistry (Paraffin) (IHC (P))	1:100-1:600	1 Publication
Immunocytochemistry (ICC/IF)	-	1 Publication

Product Specific Information

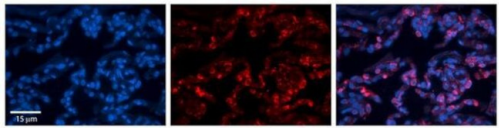
Peptide sequence: HFYFPTPTVL CNEIWTHSYK VSNYSRGSGR CIQMWFDPAQ GNPNEEVARF

Sequence homology: Cow: 93%; Dog: 100%; Guinea Pig: 93%; Horse: 100%; Human: 100%; Mouse: 100%; Rabbit: 100%; Rat: 100%

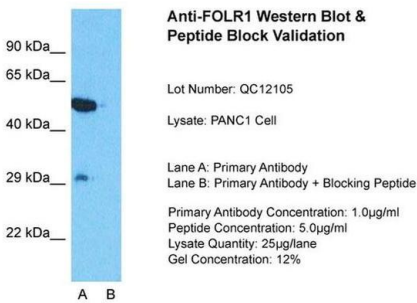
Product Images For Folate Receptor alpha Polyclonal Antibody



Folate Receptor alpha Antibody (PA5-42004) in IHC (P)
Immunohistochemistry (paraffin-embedded) analysis of human adult liver tissue using an anti-FOLR1 polyclonal antibody (Product # PA5-42004).



Folate Receptor alpha Antibody (PA5-42004) in IHC (P)
Immunohistochemistry (paraffin-embedded) analysis of human lung tissue using an anti-FOLR1 polyclonal antibody (Product # PA5-42004).



Folate Receptor alpha Antibody (PA5-42004) in WB
Western blot analysis of PANC1 whole cell lysate using an anti-FOLR1 polyclonal antibody (Product # PA5-42004). Lane 1) Primary Antibody; Lane 2) Primary Antibody + Blocking Peptide.

[View more figures on thermofisher.cn](https://thermofisher.cn)

Western Blot (1)

Journal of nuclear medicine : official publication, Society of Nuclear Medicine	Year 2021
Identification of a PET Radiotracer for Imaging of the Folate Receptor-: A Potential Tool to Select Patients for Targeted Tumor Therapy.	Species Mouse Hamster
"PA5-42004 was used in Western Blot, Immunohistochemistry (Paraffin), Immunohistochemistry to identify a folate receptor- (FR)-selective PET agent potentially suitable for the selection of patients who might profit from FR-targeted therapies."	Dilution 1:625 1:625
Authors: Guzik P,Fang HY,Deberle LM,Benešová M,Cohrs S,Boss SD,Ametamey SM,Schibli R,Müller C	

Immunohistochemistry (3)

Frontiers in pharmacology	Year 2022
Luteolin Enhances Choroid Plexus 5-MTHF Brain Transport to Promote Hippocampal Neurogenesis in LOD Rats.	Species Rat
"PA5-42004 was used in Immunohistochemistry-immunofluorescence to suggest that luteolin could ameliorate CUMS-induced LOD-like behaviors by enhancing the folate brain transport."	Dilution 1:200
Authors: Li HZ,Liu KG,Zeng NX,Wu XF,Lu WJ,Xu HF,Yan C,Wu LL	

Diabetologia	Year 2021
Characterisation of Ppy-lineage cells clarifies the functional heterogeneity of pancreatic beta cells in mice.	Species Mouse
"PA5-42004 was used in Immunohistochemistry to investigate the association between Ppy-lineage cells and beta cells, using Ppy-Cre driver mice and a PP-specific monoclonal antibody."	
Authors: Fukaishi T,Nakagawa Y,Fukunaka A,Sato T,Hara A,Nakao K,Saito M,Kohno K,Miyatsuka T,Tamaki M,Matsuhisa M,Matsuoka TA,Yamada T,Watada H,Fujitani Y	

[View more IHC references on thermofisher.cn](#)

Immunohistochemistry (Paraffin) (1)

Journal of nuclear medicine : official publication, Society of Nuclear Medicine	Year 2021
Identification of a PET Radiotracer for Imaging of the Folate Receptor-: A Potential Tool to Select Patients for Targeted Tumor Therapy.	Species Mouse Hamster
"PA5-42004 was used in Western Blot, Immunohistochemistry (Paraffin), Immunohistochemistry to identify a folate receptor- (FR)-selective PET agent potentially suitable for the selection of patients who might profit from FR-targeted therapies."	Dilution 1:625 1:625
Authors: Guzik P,Fang HY,Deberle LM,Benešová M,Cohrs S,Boss SD,Ametamey SM,Schibli R,Müller C	

More applications with references on thermofisher.cn

ICC/IF (1)

For Research Use Only. Not for use in diagnostic procedures. Not for resale without express authorization. Products are warranted to operate or perform substantially in conformance with published Product specifications in effect at the time of sale, as set forth in the Production documentation, specifications and/or accompanying package inserts ("Documentation"). No claim of suitability for use in applications regulated by FDA is made. The warranty provided herein is valid only when used by properly trained individuals. Unless otherwise stated in the Documentation, this warranty is limited to one year from date of shipment when the Product is subjected to normal, proper and intended usage. This warranty does not extend to anyone other than the Buyer. Any model or sample furnished to Buyer is merely illustrative of the general type and quality of goods and does not represent that any Product will conform to such model or sample. NO OTHER WARRANTIES, EXPRESS OR IMPLIED, ARE GRANTED INCLUDING WITHOUT LIMITATION, IMPLIED WARRANTIES OF MERCHANTABILITY, FITNESS FOR ANY PARTICULAR PURPOSE, OR NON-INFRINGEMENT. BUYER'S EXCLUSIVE REMEDY FOR NON-CONFORMING PRODUCTS DURING THE WARRANTY PERIOD IS LIMITED TO REPAIR, REPLACEMENT OF OR REFUND FOR THE NON-CONFORMING PRODUCT(S) AT SELLER'S SOLE OPTION. THERE IS NO OBLIGATION TO REPAIR, REPLACE OR REFUND FOR PRODUCTS AS THE RESULT OF (I) ACCIDENT, DISASTER OR EVENT OF FORCE MAJEURE, (II) MISUSE, FAULT OR NEGLIGENCE OF OR BY BUYER, (III) USE OF THE PRODUCTS IN A MANNER FOR WHICH THEY WERE NOT DESIGNED, OR (IV) IMPROPER STORAGE AND HANDLING OF THE PRODUCTS. Unless otherwise expressly stated on the Product or in the documentation accompanying the Product, the Product is intended for research only and is not to be used for any other purpose, including without limitation, unauthorized commercial uses, in vitro diagnostic uses, ex vivo or in vivo therapeutic uses, or any type of consumption by or application to human or animals.