

# POLR1B Polyclonal Antibody

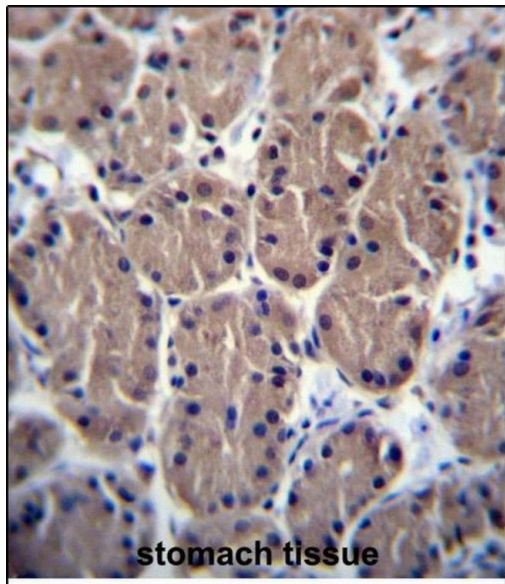
Product Details	
Size	400 µL
Species Reactivity	Human
Published Species	Human
Host/Isotype	Rabbit / IgG
Class	Polyclonal
Type	Antibody
Conjugate	Unconjugated
Immunogen	KLH conjugated synthetic peptide between 89-117 amino acids from the N-terminal region of human POLR1B.
Form	Liquid
Concentration	0.5 mg/mL
Purification	Protein A, Antigen affinity chromatography
Storage buffer	PBS
Contains	0.09% sodium azide
Storage conditions	-20° C, Avoid Freeze/Thaw Cycles
RRID	AB_2633840

Applications	Tested Dilution	Publications
Western Blot (WB)	1:1,000	1 Publication
Immunohistochemistry (IHC)	-	1 Publication
Immunohistochemistry (Paraffin) (IHC (P))	1:10-1:50	-
Immunocytochemistry (ICC/IF)	-	1 Publication
Flow Cytometry (Flow)	1:10-1:50	-

## Product Specific Information

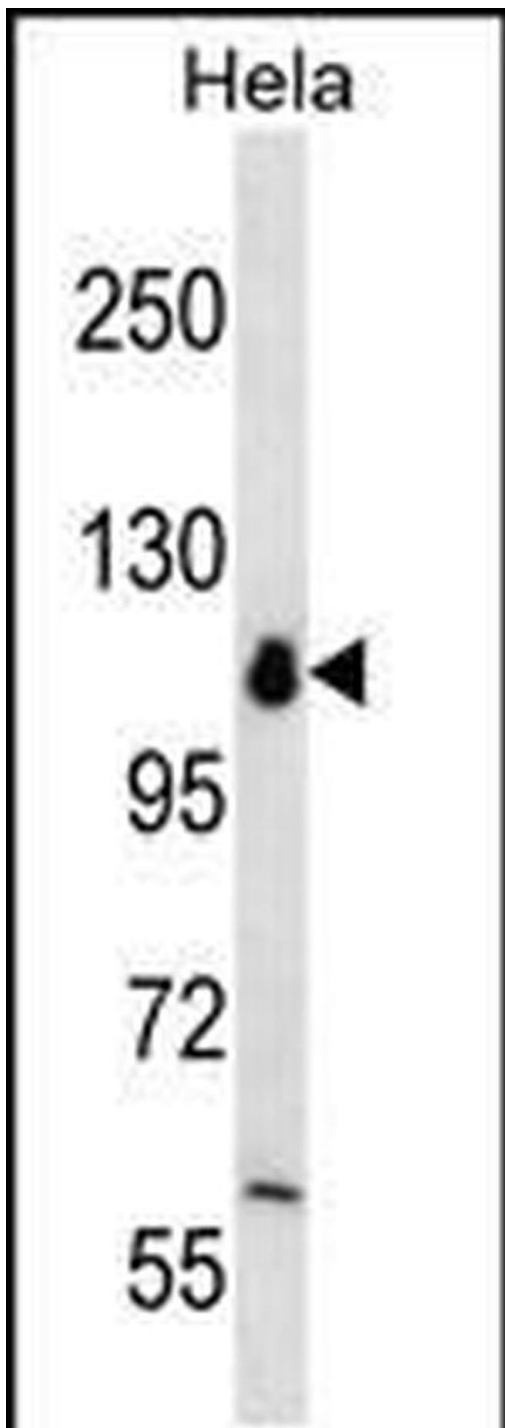
Predicted to react with rat based on sequence homology.

## Product Images For POLR1B Polyclonal Antibody



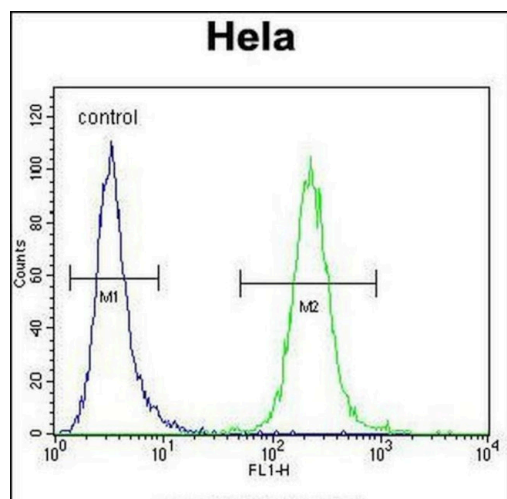
#### **POLR1B Antibody (PA5-48383) in IHC (P)**

Immunohistochemical analysis of POLR1B in formalin fixed and paraffin embedded human stomach tissue. Samples were probed with a POLR1B Antibody (N-term) (Product # PA5-48383) followed by peroxidase conjugation of the secondary antibody and DAB staining.



#### **POLR1B Antibody (PA5-48383) in WB**

Western blot analysis of POLR1B in HeLa cell line lysates (35 µg/lane). Lysates were probed with a POLR1B Antibody (N-term) (Product # PA5-48383).



#### **POLR1B Antibody (PA5-48383) in Flow**

Flow cytometric analysis of POLR1B in Hela cells (right histogram) compared to a negative control cell (left histogram). Samples were incubated with a POLR1B Antibody (N-term) (Product # PA5-48383) followed by incubation with a FITC-conjugated goat-anti-rabbit secondary antibody.

**View more figures on [thermofisher.cn](http://thermofisher.cn)**

Western Blot (1)

<p>Aging</p> <p><b>Long non-coding RNA ZFAS1 promotes colorectal cancer tumorigenesis and development through DDX21-POLR1B regulatory axis.</b></p> <p>"PA5-48383 was used in Western Blotting to identify POLR1B as the downstream target of DDX21 regulated by ZFAS1, which was also up-regulated in CRC cells and tissues and closely related to poor prognosis."</p> <p>Authors: Wang X,Wu Z,Qin W,Sun T,Lu S,Li Y,Wang Y,Hu X,Xu D,Wu Y,Chen Q,Yao W,Liu M,Wei M,Wu H</p>	<p>Year 2020</p> <p>Species Human</p> <p>Dilution 1:1000</p>
--	--

Immunohistochemistry (1)

<p>Aging</p> <p><b>Long non-coding RNA ZFAS1 promotes colorectal cancer tumorigenesis and development through DDX21-POLR1B regulatory axis.</b></p> <p>"PA5-48383 was used in Western Blotting to identify POLR1B as the downstream target of DDX21 regulated by ZFAS1, which was also up-regulated in CRC cells and tissues and closely related to poor prognosis."</p> <p>Authors: Wang X,Wu Z,Qin W,Sun T,Lu S,Li Y,Wang Y,Hu X,Xu D,Wu Y,Chen Q,Yao W,Liu M,Wei M,Wu H</p>	<p>Year 2020</p> <p>Species Human</p> <p>Dilution 1:1000</p>
--	--

Immunocytochemistry (1)

<p>Aging</p> <p><b>Long non-coding RNA ZFAS1 promotes colorectal cancer tumorigenesis and development through DDX21-POLR1B regulatory axis.</b></p> <p>"PA5-48383 was used in Western Blotting to identify POLR1B as the downstream target of DDX21 regulated by ZFAS1, which was also up-regulated in CRC cells and tissues and closely related to poor prognosis."</p> <p>Authors: Wang X,Wu Z,Qin W,Sun T,Lu S,Li Y,Wang Y,Hu X,Xu D,Wu Y,Chen Q,Yao W,Liu M,Wei M,Wu H</p>	<p>Year 2020</p> <p>Species Human</p> <p>Dilution 1:1000</p>
--	--

For Research Use Only. Not for use in diagnostic procedures. Not for resale without express authorization. Products are warranted to operate or perform substantially in conformance with published Product specifications in effect at the time of sale, as set forth in the Production documentation, specifications and/or accompanying package inserts ("Documentation"). No claim of suitability for use in applications regulated by FDA is made. The warranty provided herein is valid only when used by properly trained individuals. Unless otherwise stated in the Documentation, this warranty is limited to one year from date of shipment when the Product is subjected to normal, proper and intended usage. This warranty does not extend to anyone other than the Buyer. Any model or sample furnished to Buyer is merely illustrative of the general type and quality of goods and does not represent that any Product will conform to such model or sample. NO OTHER WARRANTIES, EXPRESS OR IMPLIED, ARE GRANTED INCLUDING WITHOUT LIMITATION, IMPLIED WARRANTIES OF MERCHANTABILITY, FITNESS FOR ANY PARTICULAR PURPOSE, OR NON-INFRINGEMENT. BUYER'S EXCLUSIVE REMEDY FOR NON-CONFORMING PRODUCTS DURING THE WARRANTY PERIOD IS LIMITED TO REPAIR, REPLACEMENT OF OR REFUND FOR THE NON-CONFORMING PRODUCT(S) AT SELLER'S SOLE OPTION. THERE IS NO OBLIGATION TO REPAIR, REPLACE OR REFUND FOR PRODUCTS AS THE RESULT OF (I) ACCIDENT, DISASTER OR EVENT OF FORCE MAJEURE, (II) MISUSE, FAULT OR NEGLIGENCE OF OR BY BUYER, (III) USE OF THE PRODUCTS IN A MANNER FOR WHICH THEY WERE NOT DESIGNED, OR (IV) IMPROPER STORAGE AND HANDLING OF THE PRODUCTS. Unless otherwise expressly stated on the Product or in the documentation accompanying the Product, the Product is intended for research only and is not to be used for any other purpose, including without limitation, unauthorized commercial uses, in vitro diagnostic uses, ex vivo or in vivo therapeutic uses, or any type of consumption by or application to human or animals.