

E2F7 Polyclonal Antibody

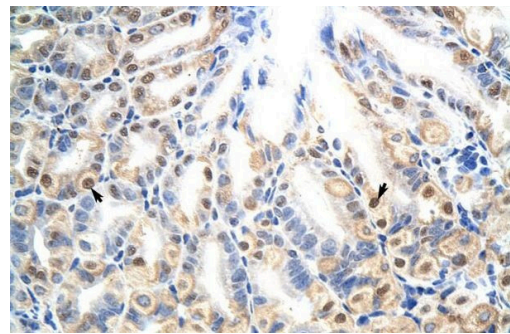
Product Details	
Size	100 µL
Species Reactivity	Human, Mouse
Published Species	Human
Host/Isotype	Rabbit / IgG
Class	Polyclonal
Type	Antibody
Conjugate	Unconjugated
Immunogen	synthetic peptide directed towards the N terminal region of mouse E2F7
Form	Liquid
Concentration	0.5 mg/mL
Purification	Affinity chromatography
Storage buffer	PBS with 2% sucrose
Contains	0.09% sodium azide
Storage conditions	-20° C, Avoid Freeze/Thaw Cycles
RRID	AB_2688627

Applications	Tested Dilution	Publications
Western Blot (WB)	0.2-1.0 µg/mL	2 Publications
Immunohistochemistry (IHC)	Assay-dependent	1 Publication

Product Specific Information

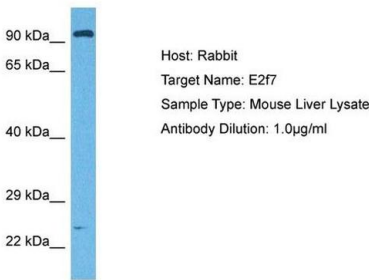
This target displays homology in the following species: Cow: 93%; Dog: 86%; Horse: 85%; Human: 86%; Mouse: 100%; Pig: 92%; Rabbit: 79%; Rat: 86%

Product Images For E2F7 Polyclonal Antibody



E2F7 Antibody (PA5-68911) in IHC

Immunohistochemistry was performed on mouse stomach tissue using a E2F7 polyclonal antibody (Product # PA5-68911).



E2F7 Antibody (PA5-68911) in WB

Western blot analysis of E2F7 on mouse liver tissue lysate. The sample was probed with a E2F7 polyclonal antibody (Product # PA5-68911) using a primary antibody dilution of 1.0 µg/mL.



E2F7 Antibody (PA5-68911) in WB

Western blot analysis of E2F7 on mouse SP2/0 cells. The sample was probed with a E2F7 polyclonal antibody (Product # PA5-68911) using a primary antibody dilution of 0.2-1.0 µg/mL.

View more figures on thermofisher.cn

Western Blot (2)

<p>Cell reports. Medicine</p> <p>Harnessing transcriptionally driven chromosomal instability adaptation to target therapy-refractory lethal prostate cancer.</p> <p>"PA5-68911 was used in Western Blotting and Immunohistochemistry to unveil a chromosomal instability (CIN) tolerance mechanism as a therapeutic vulnerability of therapy-refractory lethal prostate cancer."</p> <p>Authors: Dhital B,Santatusagna S,Kirthika P,Xu M,Li P,Carceles-Cordon M,Soni RK,Li Z,Hendrickson RC,Schiewer MJ,Kelly WK,Sternberg CN,Luo J,Lujambio A,Cordon-Cardo C,Alvarez-Fernandez M,Malumbres M,Huang H,Ertel A,Domingo-Domenech J,Rodriguez-Bravo V</p>	<p>Year 2023</p> <p>Species Human</p>
<p>Journal of experimental & clinical cancer research : CR</p> <p>MicroRNA-302a/d inhibits the self-renewal capability and cell cycle entry of liver cancer stem cells by targeting the E2F7/AKT axis.</p> <p>"PA5-68911 was used in Western Blotting to provide the first evidence that E2F7 is a direct target of miRNA-302a/d and miRNA-302a/d inhibits the stemness of LCSCs and proliferation of HCC cells by targeting the E2F7/AKT/-catenin /CCND1 signaling pathway."</p> <p>Authors: Ma YS,Lv ZW,Yu F,Chang ZY,Cong XL,Zhong XM,Lu GX,Zhu J,Fu D</p>	<p>Year 2018</p> <p>Species Human</p> <p>Dilution 1:1000</p>

Immunohistochemistry (1)

<p>Cell reports. Medicine</p> <p>Harnessing transcriptionally driven chromosomal instability adaptation to target therapy-refractory lethal prostate cancer.</p> <p>"PA5-68911 was used in Western Blotting and Immunohistochemistry to unveil a chromosomal instability (CIN) tolerance mechanism as a therapeutic vulnerability of therapy-refractory lethal prostate cancer."</p> <p>Authors: Dhital B,Santatusagna S,Kirthika P,Xu M,Li P,Carceles-Cordon M,Soni RK,Li Z,Hendrickson RC,Schiewer MJ,Kelly WK,Sternberg CN,Luo J,Lujambio A,Cordon-Cardo C,Alvarez-Fernandez M,Malumbres M,Huang H,Ertel A,Domingo-Domenech J,Rodriguez-Bravo V</p>	<p>Year 2023</p> <p>Species Human</p>
---	---

For Research Use Only. Not for use in diagnostic procedures. Not for resale without express authorization. Products are warranted to operate or perform substantially in conformance with published Product specifications in effect at the time of sale, as set forth in the Production documentation, specifications and/or accompanying package inserts ("Documentation"). No claim of suitability for use in applications regulated by FDA is made. The warranty provided herein is valid only when used by properly trained individuals. Unless otherwise stated in the Documentation, this warranty is limited to one year from date of shipment when the Product is subjected to normal, proper and intended usage. This warranty does not extend to anyone other than the Buyer. Any model or sample furnished to Buyer is merely illustrative of the general type and quality of goods and does not represent that any Product will conform to such model or sample. NO OTHER WARRANTIES, EXPRESS OR IMPLIED, ARE GRANTED INCLUDING WITHOUT LIMITATION, IMPLIED WARRANTIES OF MERCHANTABILITY, FITNESS FOR ANY PARTICULAR PURPOSE, OR NON-INFRINGEMENT. BUYER'S EXCLUSIVE REMEDY FOR NON-CONFORMING PRODUCTS DURING THE WARRANTY PERIOD IS LIMITED TO REPAIR, REPLACEMENT OF OR REFUND FOR THE NON-CONFORMING PRODUCT(S) AT SELLER'S SOLE OPTION. THERE IS NO OBLIGATION TO REPAIR, REPLACE OR REFUND FOR PRODUCTS AS THE RESULT OF (I) ACCIDENT, DISASTER OR EVENT OF FORCE MAJEURE, (II) MISUSE, FAULT OR NEGLIGENCE OF OR BY BUYER, (III) USE OF THE PRODUCTS IN A MANNER FOR WHICH THEY WERE NOT DESIGNED, OR (IV) IMPROPER STORAGE AND HANDLING OF THE PRODUCTS. Unless otherwise expressly stated on the Product or in the documentation accompanying the Product, the Product is intended for research only and is not to be used for any other purpose, including without limitation, unauthorized commercial uses, in vitro diagnostic uses, ex vivo or in vivo therapeutic uses, or any type of consumption by or application to human or animals.