

Bcl-10 Polyclonal Antibody

Product Details	
Size	100 µL
Species Reactivity	Human, Mouse, Rat
Published Species	Dog
Host/Isotype	Rabbit / IgG
Class	Polyclonal
Type	Antibody
Conjugate	Unconjugated
Immunogen	Recombinant protein encompassing a sequence within the center region of human BCL10.
Form	Liquid
Concentration	1 mg/mL
Purification	Antigen affinity chromatography
Storage buffer	PBS, pH 7, with 20% glycerol, 1% BSA
Contains	0.01% thimerosal
Storage conditions	Store at 4°C short term. For long term storage, store at -20°C, avoiding freeze/thaw cycles.
RRID	AB_2792501

Applications	Tested Dilution	Publications
Western Blot (WB)	1:500-1:3,000	1 Publication
Immunohistochemistry (Paraffin) (IHC (P))	1:100-1:1,000	-
Immunocytochemistry (ICC/IF)	1:100	-

Product Specific Information

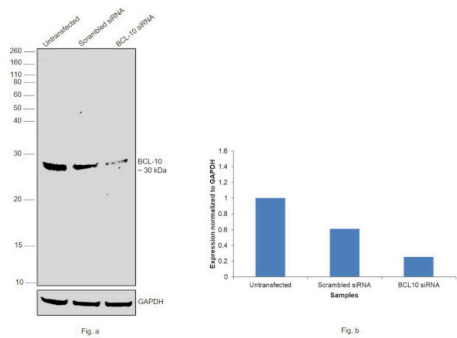
Keep as concentrated solution.

Predicted reactivity: Mouse (95%), Rat (96%), Pig (96%), Rhesus Monkey (99%), Bovine (99%).

Positive Control: Jurkat, Neuro2A, GL261, C8D30.

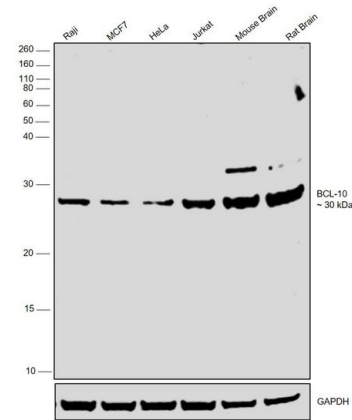
Store product as a concentrated solution. Centrifuge briefly prior to opening the vial.

Product Images For Bcl-10 Polyclonal Antibody



Bcl-10 Antibody (PA5-85359)

Antibody specificity was demonstrated by siRNA mediated knockdown of target protein. Raji cells were transfected with BCL-10 siRNA and decrease in signal intensity was observed in Western Blot application using Anti-Bcl-10 Polyclonal Antibody (Product # PA5-85359). {KD}

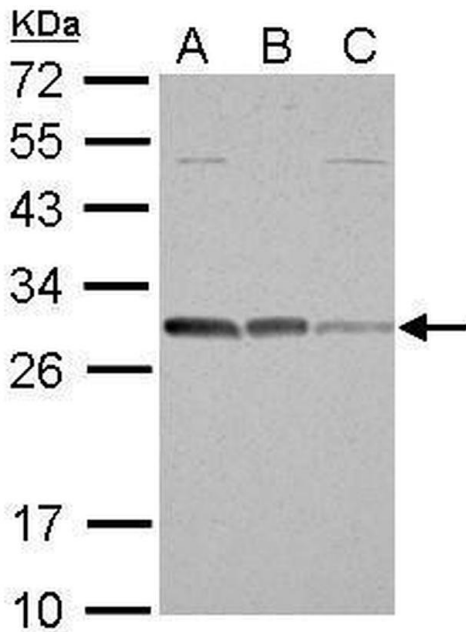


Bcl-10 Antibody (PA5-85359) in WB

Western blot was performed using Anti-Bcl-10 Polyclonal Antibody (Product # PA5-85359) and a 30 kDa band corresponding to BCL-10 (B-cell lymphoma /leukemia 10) was observed across cell lines and tissues tested. Whole cell extracts (40 µg lysate) of Raji (Lane 1), MCF7 (Lane 2), HeLa (Lane 3), Jurkat (Lane 4), Mouse Brain (Lane 5) and Rat Brain (Lane 6) were electrophoresed using NuPAGE™ 12% Bis-Tris Protein Gel (Product # NP0341BOX). Resolved proteins were then transferred onto a Nitrocellulose membrane (Product # IB23001) by iBlot® 2 Dry Blotting System (Product # IB21001). The blot was probed with the primary antibody (1:2750 dilution) and detected by chemiluminescence with Goat anti-Rabbit IgG (Heavy Chain) Superclonal™ Recombinant Secondary Antibody, HRP (Product # A27036, 1:10000 dilution) using the iBright FL 1000 (Product # A32752). Chemiluminescent detection was performed using Novex® ECL Reagent Kit (Product # WP20005).

Bcl-10 Antibody (PA5-85359) in WB

Western blot analysis of Bcl-10 in A) Neuro2A whole cell lysate, B) GL261 whole cell lysate, C) C8D30 whole cell lysate using Bcl-10 polyclonal antibody (Product # PA5-85359) using 30 µg of sample at a dilution of 1:1000. Prior to incubation with primary antibody, the sample was separated on 12% SDS-PAGE.



View more figures on thermofisher.cn

Western Blot (1)

International journal of molecular sciences	Year 2022
Age-Dependent Variations in Functional Quality and Proteomic Characteristics of Canine (<i>Canis lupus familiaris</i>) Epididymal Spermatozoa.	Species Dog
"PA5-85359 was used in Western Blot to investigate the relationship between the functional quality and proteome of epididymal spermatozoa of dogs that were differing in age."	Dilution 1:250
Authors: Zmudzinska A,Wisniewski J,Mlynarz P,Olejniak B,Mogielnicka-Brzozowska M	

For Research Use Only. Not for use in diagnostic procedures. Not for resale without express authorization. Products are warranted to operate or perform substantially in conformance with published Product specifications in effect at the time of sale, as set forth in the Production documentation, specifications and/or accompanying package inserts ("Documentation"). No claim of suitability for use in applications regulated by FDA is made. The warranty provided herein is valid only when used by properly trained individuals. Unless otherwise stated in the Documentation, this warranty is limited to one year from date of shipment when the Product is subjected to normal, proper and intended usage. This warranty does not extend to anyone other than the Buyer. Any model or sample furnished to Buyer is merely illustrative of the general type and quality of goods and does not represent that any Product will conform to such model or sample. NO OTHER WARRANTIES, EXPRESS OR IMPLIED, ARE GRANTED INCLUDING WITHOUT LIMITATION, IMPLIED WARRANTIES OF MERCHANTABILITY, FITNESS FOR ANY PARTICULAR PURPOSE, OR NON INFRINGEMENT. BUYER'S EXCLUSIVE REMEDY FOR NON-CONFORMING PRODUCTS DURING THE WARRANTY PERIOD IS LIMITED TO REPAIR, REPLACEMENT OF OR REFUND FOR THE NON-CONFORMING PRODUCT(S) AT SELLER'S SOLE OPTION. THERE IS NO OBLIGATION TO REPAIR, REPLACE OR REFUND FOR PRODUCTS AS THE RESULT OF (i) ACCIDENT, DISASTER OR EVENT OF FORCE MAJEURE, (ii) MISUSE, FAULT OR NEGLIGENCE OF OR BY BUYER, (iii) USE OF THE PRODUCTS IN A MANNER FOR WHICH THEY WERE NOT DESIGNED, OR (iv) IMPROPER STORAGE AND HANDLING OF THE PRODUCTS. Unless otherwise expressly stated on the Product or in the documentation accompanying the Product, the Product is intended for research only and is not to be used for any other purpose, including without limitation, unauthorized commercial uses, in vitro diagnostic uses, ex vivo or in vivo therapeutic uses, or any type of consumption by or application to human or animals.