

Goat anti-Human IgM Secondary Antibody, HRP

Product Details	
Size	1 mg
Species Reactivity	Human
Host/Isotype	Goat / IgG
Class	Polyclonal
Type	Secondary Antibody
Conjugate	HRP
Immunogen	Human IgM
Form	Liquid
Concentration	1.0 mg/mL
Purification	Antigen affinity chromatography
Storage buffer	50mM HEPES with proprietary stabilizer
Contains	0.002% thimerosal
Storage conditions	4° C
RRID	AB_2868341

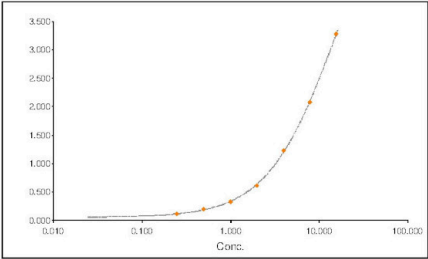
Applications	Tested Dilution	Publications
Western Blot (WB)	Assay-dependent	-
Immunohistochemistry (IHC)	Assay-dependent	-
ELISA (ELISA)	Assay-dependent	-
Immunoelectrophoresis (IE)	Assay-dependent	-

Product Specific Information

This antibody may cross react with IgM from other species.

Product Images For Goat anti-Human IgM Secondary Antibody, HRP

ELISA Raw Data		
Well Number	Concentration	A ₄₅₀
1	31.3 ng/mL	>3.8
2	15.7 ng/mL	3.270
3	7.9 ng/mL	2.074
4	4.0 ng/mL	1.222
5	2.0 ng/mL	0.610
6	1.0 ng/mL	0.318
7	0.5 ng/mL	0.186
8	0.25 ng/mL	0.109
9	0 ng/mL	0.040



Human IgM Secondary Antibody (SA5-10293) in ELISA

ELISA analysis was performed using Human IgM antigen (500 ng/well, 60 min). Samples were blocked for 60 min with 1% BSA, and incubated with HRP Goat anti-Human IgM (Product # SA5-10293) for 60 min. Development was done with TMB substrate (10 min) and the reaction was stopped with 0.3M H2SO4. Results were read on a microplate reader at OD450.

1 Reference

Can anti-PGL-I antibody isotypes differentiate leprosy contacts and leprosy patients? Pathog Glob Health (2022)

For Research Use Only. Not for use in diagnostic procedures. Not for resale without express authorization. Products are warranted to operate or perform substantially in conformance with published Product specifications in effect at the time of sale, as set forth in the Production documentation, specifications and/or accompanying package inserts ("Documentation"). No claim of suitability for use in applications regulated by FDA is made. The warranty provided herein is valid only when used by properly trained individuals. Unless otherwise stated in the Documentation, this warranty is limited to one year from date of shipment when the Product is subjected to normal, proper and intended usage. This warranty does not extend to anyone other than the Buyer. Any model or sample furnished to Buyer is merely illustrative of the general type and quality of goods and does not represent that any Product will conform to such model or sample. NO OTHER WARRANTIES, EXPRESS OR IMPLIED, ARE GRANTED INCLUDING WITHOUT LIMITATION, IMPLIED WARRANTIES OF MERCHANTABILITY, FITNESS FOR ANY PARTICULAR PURPOSE, OR NON-INFRINGEMENT. BUYER'S EXCLUSIVE REMEDY FOR NON-CONFORMING PRODUCTS DURING THE WARRANTY PERIOD IS LIMITED TO REPAIR, REPLACEMENT OF OR REFUND FOR THE NON-CONFORMING PRODUCT(S) AT SELLER'S SOLE OPTION. THERE IS NO OBLIGATION TO REPAIR, REPLACE OR REFUND FOR PRODUCTS AS THE RESULT OF (I) ACCIDENT, DISASTER OR EVENT OF FORCE MAJEURE, (II) MISUSE, FAULT OR NEGLIGENCE OF OR BY BUYER, (III) USE OF THE PRODUCTS IN A MANNER FOR WHICH THEY WERE NOT DESIGNED, OR (IV) IMPROPER STORAGE AND HANDLING OF THE PRODUCTS. Unless otherwise expressly stated on the Product or in the documentation accompanying the Product, the Product is intended for research only and is not to be used for any other purpose, including without limitation, unauthorized commercial uses, in vitro diagnostic uses, ex vivo or in vivo therapeutic uses, or any type of consumption by or application to human or animals.