

Mouse IgG2a Isotype Control (PPV-04)

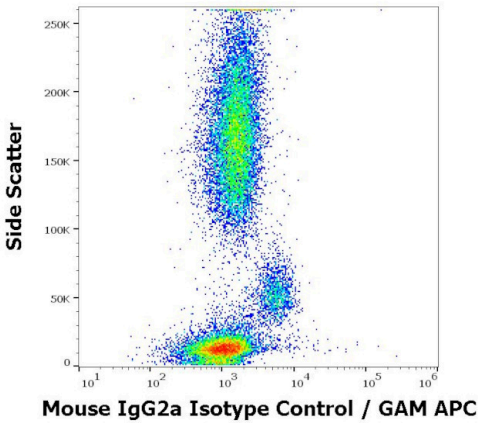
Product Details	
Size	100 µg
Host/Isotype	Mouse / IgG2a
Class	Control
Type	Isotype Control
Clone	PPV-04
Conjugate	Unconjugated
Immunogen	Plum pox virus
Form	Liquid
Concentration	1 mg/mL
Purification	Protein A
Storage buffer	PBS, pH 7.4
Contains	15mM sodium azide
Storage conditions	4° C, do not freeze
RRID	AB_2536787

Applications	Tested Dilution	Publications
Immunohistochemistry (Paraffin) (IHC (P))	Assay-dependent	-
Immunohistochemistry (Frozen) (IHC (F))	Assay-dependent	-
Immunocytochemistry (ICC/IF)	Assay-dependent	-
Flow Cytometry (Flow)	Assay-dependent	-
Immunoprecipitation (IP)	Assay-dependent	-
Control (Ctrl)	Assay-Dependent	-

Product Specific Information

MA1-10419 can be used as a negative control to measure the non-specific binding of Mouse IgG2a in human, porcine, mouse and rat tissues.

Product Images For Mouse IgG2a Isotype Control (PPV-04)



Mouse IgG2a Isotype Control (MA1-10419) in Flow
Flow cytometry surface nonspecific staining pattern of human peripheral whole blood stained using mouse IgG2a Isotype control (PPV-04) purified antibody (Product # MA1-10419) (concentration in sample 10 µg/mL, GAM APC).

2 References

The role of FYCO1-dependent autophagy in lens fiber cell differentiation. Autophagy (2022)

N-glycosylation in the protease domain of trypsin-like serine proteases mediates calnexin-assisted protein folding. Elife (2018)

For Research Use Only. Not for use in diagnostic procedures. Not for resale without express authorization. Products are warranted to operate or perform substantially in conformance with published Product specifications in effect at the time of sale, as set forth in the Production documentation, specifications and/or accompanying package inserts ("Documentation"). No claim of suitability for use in applications regulated by FDA is made. The warranty provided herein is valid only when used by properly trained individuals. Unless otherwise stated in the Documentation, this warranty is limited to one year from date of shipment when the Product is subjected to normal, proper and intended usage. This warranty does not extend to anyone other than the Buyer. Any model or sample furnished to Buyer is merely illustrative of the general type and quality of goods and does not represent that any Product will conform to such model or sample. NO OTHER WARRANTIES, EXPRESS OR IMPLIED, ARE GRANTED INCLUDING WITHOUT LIMITATION, IMPLIED WARRANTIES OF MERCHANTABILITY, FITNESS FOR ANY PARTICULAR PURPOSE, OR NON-INFRINGEMENT. BUYER'S EXCLUSIVE REMEDY FOR NON-CONFORMING PRODUCTS DURING THE WARRANTY PERIOD IS LIMITED TO REPAIR, REPLACEMENT OF OR REFUND FOR THE NON-CONFORMING PRODUCT(S) AT SELLER'S SOLE OPTION. THERE IS NO OBLIGATION TO REPAIR, REPLACE OR REFUND FOR PRODUCTS AS THE RESULT OF (i) ACCIDENT, DISASTER OR EVENT OF FORCE MAJEURE, (ii) MISUSE, FAULT OR NEGLIGENCE OF OR BY BUYER, (iii) USE OF THE PRODUCTS IN A MANNER FOR WHICH THEY WERE NOT DESIGNED, OR (iv) IMPROPER STORAGE AND HANDLING OF THE PRODUCTS. Unless otherwise expressly stated on the Product or in the documentation accompanying the Product, the Product is intended for research only and is not to be used for any other purpose, including without limitation, unauthorized commercial uses, in vitro diagnostic uses, ex vivo or in vivo therapeutic uses, or any type of consumption by or application to human or animals.