

# CD3 Monoclonal Antibody (UCHT1), FITC, eBioscience™

Product Details	
Size	100 Tests
Species Reactivity	Human
Published Species	Rat, Human, Mouse
Host/Isotype	Mouse / IgG1, kappa
Recommended Isotype Control	Mouse IgG1 kappa Isotype Control (P3.6.2.8.1), FITC, eBioscience™
Class	Monoclonal
Type	Antibody
Clone	UCHT1
Conjugate	FITC
Excitation/Emission Max	498/517 nm
Form	Liquid
Concentration	5 µL/Test
Purification	Affinity chromatography
Storage buffer	PBS, pH 7.2, with 0.2% BSA
Contains	0.09% sodium azide
Storage conditions	4° C, store in dark, DO NOT FREEZE!
RRID	AB_2043831

Applications	Tested Dilution	Publications
Immunohistochemistry (IHC)	-	3 Publications
Flow Cytometry (Flow)	5 µL (1 µg)/test	59 Publications

## Product Specific Information

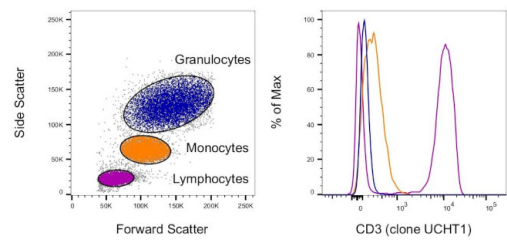
**Description:** The UCHT1 monoclonal antibody reacts with human CD3e, a 20 kDa subunit of the TCR complex. Along with the other CD3 subunits gamma and delta, the epsilon chain is required for proper assembly, trafficking and surface expression of the TCR complex. CD3 is expressed by thymocytes in a developmentally regulated manner and by all mature T cells. Crosslinking of TCR via immobilized UCHT1 initiates an intracellular biochemical pathway resulting in cellular activation and proliferation.

**Applications Reported:** The UCHT1 antibody has been reported for use in flow cytometric analysis.

**Applications Tested:** Has been pre-titrated and tested by flow cytometric analysis of normal human peripheral blood cells. This can be used at 5 µL (1 µg) per test. A test is defined as the amount (µg) of antibody that will stain a cell sample in a final volume of 100 µL. Cell number should be determined empirically but can range from 10<sup>5</sup> to 10<sup>8</sup> cells/test.

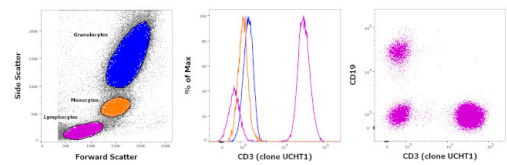
**Excitation:** 488 nm; **Emission:** 520 nm; **Laser:** Blue Laser.

**Filtration:** 0.2 µm post-manufacturing filtered.



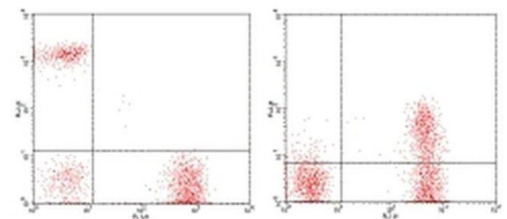
**CD3 Antibody (11-0038-42)**

Staining of human peripheral blood cells. As expected based on known relative expression patterns, CD3 clone UCHT1 stains a subset of lymphocytes (T cells) and does not stain monocytes and granulocytes. Details: Normal human whole blood was surface stained with CD3 (clone UCHT1). After staining, red blood cells were lysed using 1-step Fix/Lyse Buffer. Cells in the lymphocyte (purple histogram), monocyte (orange histogram), or granulocyte (blue histogram) gates were used for analysis. {RE}



**CD3 Antibody (11-0038-42) in Flow**

Staining of human peripheral blood mononuclear cells with CD45 Pacific Blue, CD19 APC and CD3 FITC. As expected based on known relative expression patterns, CD3 clone UCHT1 stains a subset of lymphocytes (pink), but not monocytes (orange) and granulocytes (blue).



**CD3 Antibody (11-0038-42) in Flow**

Staining of normal human peripheral blood cells with Anti-Human CD19 PE (Product # 12-0199-80) (y-axis, left) or Anti-Human CD150 PE (Product # 12-1509-42) (y-axis, right) and Anti-Human CD3 FITC (x-axis).

[View more figures on thermofisher.cn](https://thermofisher.cn)

Immunohistochemistry (3)

<p>PloS one</p> <p><b>Ulcerative colitis impairs the acylethanolamide-based anti-inflammatory system reversal by 5-aminosalicylic acid and glucocorticoids.</b></p> <p>"Published figure using CD3 monoclonal antibody (Product # 11-0038-42) in Immunofluorescence"</p> <p>Authors: Suárez J,Romero-Zerbo Y,Márquez L,Rivera P,Iglesias M,Bermúdez-Silva FJ,Andreu M,Rodríguez de Fonseca F</p>	<p>Year</p> <p>2012</p>
<p>Hepatology (Baltimore, Md.)</p> <p><b>Accumulation of natural killer T cells in progressive nonalcoholic fatty liver disease.</b></p> <p>"Published figure using CD3 monoclonal antibody (Product # 11-0038-42) in Immunohistochemistry"</p> <p>Authors: Syn WK,Oo YH,Pereira TA,Karaca GF,Jung Y,Omenetti A,Witek RP,Choi SS,Guy CD,Fearing CM,Teaberry V,Pereira FE,Adams DH,Diehl AM</p>	<p>Year</p> <p>2010</p>

View more IHC references on thermofisher.cn

Flow Cytometry (59)

<p>NPJ microgravity</p> <p><b>Endothelial dysfunction markers and immune response indices in cosmonauts' blood after long-duration space flights.</b></p> <p>"11-0038-42 was used in Flow cytometry/Cell sorting to investigat the markers of endothelial activation and damage (plasma concentrations of soluble thrombomodulin fraction (sTM), von Willebrand factor (vWF), highly sensitive C-reactive protein (hs-CRP)), as well as the level of D-dimer and compared them to the immunological parameters characterizing the state of human humoral and cellular immunity."</p> <p>Authors: Kuzichkin DS,Nichiporuk IA,Zhuravleva OA,Markin AA,Rykova MP,Zhuravleva TV,Sadova AA,Kutko OV,Shmarov VA,Ponomarev SA</p>	<p>Year</p> <p>2022</p> <p>Species</p> <p>Human</p>
<p>Frontiers in immunology</p> <p><b>Lower High-Density Lipoproteins Levels During Human Immunodeficiency Virus Type 1 Infection Are Associated With Increased Inflammatory Markers and Disease Progression.</b></p> <p>"11-0038 was used in Flow cytometry/Cell sorting to indicate that HDL might modulate the expression of several key components of the inflammasomes during HIV-1 infection, suggesting a novel role of HDL in modifying the inflammatory state and consequently, the progression of HIV-1 infection."</p> <p>Authors: Marín-Palma D,Castro GA,Cardona-Arias JA,Urcuqui-Inchima S,Hernandez JC</p>	<p>Year</p> <p>2022</p> <p>Species</p> <p>Human</p>

View more Flow references on thermofisher.cn

More applications with references on thermofisher.cn

For Research Use Only. Not for use in diagnostic procedures. Not for resale without express authorization. Products are warranted to operate or perform substantially in conformance with published Product specifications in effect at the time of sale, as set forth in the Production documentation, specifications and/or accompanying package inserts ("Documentation"). No claim of suitability for use in applications regulated by FDA is made. The warranty provided herein is valid only when used by properly trained individuals. Unless otherwise stated in the Documentation, this warranty is limited to one year from date of shipment when the Product is subjected to normal, proper and intended usage. This warranty does not extend to anyone other than the Buyer. Any model or sample furnished to Buyer is merely illustrative of the general type and quality of goods and does not represent that any Product will conform to such model or sample. NO OTHER WARRANTIES, EXPRESS OR IMPLIED, ARE GRANTED INCLUDING WITHOUT LIMITATION, IMPLIED WARRANTIES OF MERCHANTABILITY, FITNESS FOR ANY PARTICULAR PURPOSE, OR NON INFRINGEMENT. BUYER'S EXCLUSIVE REMEDY FOR NON-CONFORMING PRODUCTS DURING THE WARRANTY PERIOD IS LIMITED TO REPAIR, REPLACEMENT OF OR REFUND FOR THE NON-CONFORMING PRODUCT(S) AT SELLER'S SOLE OPTION. THERE IS NO OBLIGATION TO REPAIR, REPLACE OR REFUND FOR PRODUCTS AS THE RESULT OF (I) ACCIDENT, DISASTER OR EVENT OF FORCE MAJEURE, (II) MISUSE, FAULT OR NEGLIGENCE OF OR BY BUYER, (III) USE OF THE PRODUCTS IN A MANNER FOR WHICH THEY WERE NOT DESIGNED, OR (IV) IMPROPER STORAGE AND HANDLING OF THE PRODUCTS. Unless otherwise expressly stated on the Product or in the documentation accompanying the Product, the Product is intended for research only and is not to be used for any other purpose, including without limitation, unauthorized commercial uses, in vitro diagnostic uses, ex vivo or in vivo therapeutic uses, or any type of consumption by or application to human or animals.