

CD122 Monoclonal Antibody (TM-b1 (TM-beta1)), FITC, eBioscience™

Product Details	
Size	100 µg
Species Reactivity	Mouse
Published Species	Mouse
Host/Isotype	Rat / IgG2b, kappa
Recommended Isotype Control	Rat IgG2b kappa Isotype Control (eB149/10H5), FITC, eBioscience™
Class	Monoclonal
Type	Antibody
Clone	TM-b1 (TM-beta1)
Conjugate	FITC
Excitation/Emission Max	498/517 nm
Form	Liquid
Concentration	0.5 mg/mL
Purification	Affinity chromatography
Storage buffer	PBS, pH 7.2
Contains	0.09% sodium azide
Storage conditions	4° C, store in dark, DO NOT FREEZE!
RRID	AB_465189

Applications	Tested Dilution	Publications
Flow Cytometry (Flow)	0.5 µg/test	4 Publications

Product Specific Information

Description: The TM-b1 monoclonal antibody reacts with mouse CD122, the 90-110 kDa interleukin-2 receptor beta chain (IL-2R beta). CD122 is expressed by NK cells and some T cells in the periphery, and is upregulated by activation. CD122 associates with CD25 and CD132 (common gamma chain) to form the high affinity IL-2 receptor. High affinity binding of IL-2 to the IL-2 receptor is inhibited by the TM-b1 antibody.

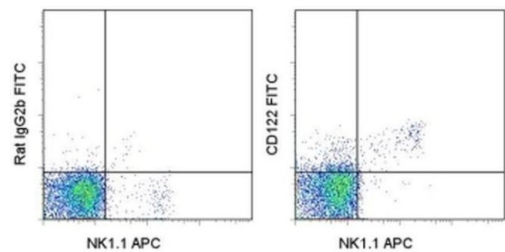
Applications Reported: This TM-b1 (TM-beta1) antibody has been reported for use in flow cytometric analysis.

Applications Tested: This TM-b1 (TM-beta1) antibody has been tested by flow cytometric analysis of mouse splenocytes. This can be used at less than or equal to 0.5 µg per test. A test is defined as the amount (µg) of antibody that will stain a cell sample in a final volume of 100 µL. Cell number should be determined empirically but can range from 10⁵ to 10⁸ cells/test. It is recommended that the antibody be carefully titrated for optimal performance in the assay of interest.

Excitation: 488 nm; **Emission:** 520 nm; **Laser:** Blue Laser.

Filtration: 0.2 µm post-manufacturing filtered.

Product Images For CD122 Monoclonal Antibody (TM-b1 (TM-beta1)), FITC, eBioscience™



CD122 Antibody (11-1222-82) in Flow
Staining of C57Bl/6 splenocytes with Anti-Mouse NK1-1 APC (Product # 17-5941-82) and 0.25 µg of Rat IgG2b K Isotype Control FITC (Product # 11-4031-82) (left) or 0.25 µg of Anti-Mouse CD122 FITC (right). Total viable cells were used for analysis.

4 References

Flow Cytometry (4)

<p>Immunity</p> <p>An Integrated Epigenomic and Transcriptomic Map of Mouse and Human T Cell Development.</p> <p>"11-1222-82 was used in Flow Cytometry to identify mouse and human thymocyte developmental trajectories."</p> <p>Authors: Chopp LB,Gopalan V,Ciucci T,Ruchinskas A,Rae Z,Lagarde M,Gao Y,Li C,Bosticardo M,Pala F,Livak F,Kelly MC,Hannenhalli S,Bosselut R</p>	<p>Year</p> <p>2020</p> <p>Species</p> <p>Mouse</p>
<p>Developmental cell</p> <p>Potently Cytotoxic Natural Killer Cells Initially Emerge from Erythro-Myeloid Progenitors during Mammalian Development.</p> <p>"11-1222-82 was used in Flow Cytometry to identify an extra-embryonic origin of potentially cytotoxic NK cells, suggesting that ontogenic origin is a relevant factor in designing hPSC-derived adoptive immunotherapies."</p> <p>Authors: Dege C,Fegan KH,Creamer JP,Berrien-Elliott MM,Luff SA,Kim D,Wagner JA,Kingsley PD,McGrath KE,Fehniger TA,Palis J,Sturgeon CM</p>	<p>Year</p> <p>2020</p> <p>Species</p> <p>Mouse</p>

[View more Flow references on thermofisher.cn](#)

For Research Use Only. Not for use in diagnostic procedures. Not for resale without express authorization. Products are warranted to operate or perform substantially in conformance with published Product specifications in effect at the time of sale, as set forth in the Production documentation, specifications and/or accompanying package inserts ("Documentation"). No claim of suitability for use in applications regulated by FDA is made. The warranty provided herein is valid only when used by properly trained individuals. Unless otherwise stated in the Documentation, this warranty is limited to one year from date of shipment when the Product is subjected to normal, proper and intended usage. This warranty does not extend to anyone other than the Buyer. Any model or sample furnished to Buyer is merely illustrative of the general type and quality of goods and does not represent that any Product will conform to such model or sample. NO OTHER WARRANTIES, EXPRESS OR IMPLIED, ARE GRANTED INCLUDING WITHOUT LIMITATION, IMPLIED WARRANTIES OF MERCHANTABILITY, FITNESS FOR ANY PARTICULAR PURPOSE, OR NON INFRINGEMENT. BUYER'S EXCLUSIVE REMEDY FOR NON-CONFORMING PRODUCTS DURING THE WARRANTY PERIOD IS LIMITED TO REPAIR, REPLACEMENT OF OR REFUND FOR THE NON-CONFORMING PRODUCT(S) AT SELLER'S SOLE OPTION. THERE IS NO OBLIGATION TO REPAIR, REPLACE OR REFUND FOR PRODUCTS AS THE RESULT OF (I) ACCIDENT, DISASTER OR EVENT OF FORCE MAJEURE, (II) MISUSE, FAULT OR NEGLIGENCE OF OR BY BUYER, (III) USE OF THE PRODUCTS IN A MANNER FOR WHICH THEY WERE NOT DESIGNED, OR (IV) IMPROPER STORAGE AND HANDLING OF THE PRODUCTS. Unless otherwise expressly stated on the Product or in the documentation accompanying the Product, the Product is intended for research only and is not to be used for any other purpose, including without limitation, unauthorized commercial uses, in vitro diagnostic uses, ex vivo or in vivo therapeutic uses, or any type of consumption by or application to human or animals.