

CD122 Monoclonal Antibody (TU27), FITC, eBioscience™

Product Details	
Size	100 Tests
Species Reactivity	Human
Published Species	Human
Host/Isotype	Mouse / IgG1, kappa
Recommended Isotype Control	Mouse IgG1 kappa Isotype Control (P3.6.2.8.1), FITC, eBioscience™
Class	Monoclonal
Type	Antibody
Clone	TU27
Conjugate	FITC
Excitation/Emission Max	498/517 nm
Form	Liquid
Concentration	5 µL/Test
Purification	Affinity chromatography
Storage buffer	PBS, pH 7.2, with 0.2% BSA
Contains	0.09% sodium azide
Storage conditions	4° C, store in dark, DO NOT FREEZE!
RRID	AB_2572474

Applications	Tested Dilution	Publications
Flow Cytometry (Flow)	5 µL (0.5 µg)/test	2 Publications

Product Specific Information

Description: This TU27 monoclonal antibody reacts with human CD122, which is also known as interleukin-2 receptor beta (IL-2R beta). This receptor is expressed on NK cells, activated T cells, some B cells, monocytes, and T cell leukemias. CD122 can also be detected during early NK cell commitment. IL-2R beta associates with the IL-2R alpha (CD25) or IL-15R alpha and common gamma chain (CD132) to form the high affinity IL-2 and IL-15 receptors, respectively. By itself, this membrane receptor can bind IL-2, but with intermediate affinity. The binding of IL-2 results in internalization of the cytokine, tyrosine phosphorylation of IL-2Rbeta, and activation of signaling cascades such as the JAK/STAT pathway.

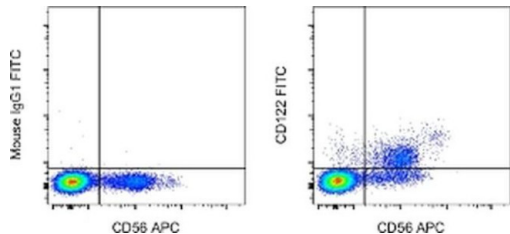
Applications Reported: This TU27 antibody has been reported for use in flow cytometric analysis.

Applications Tested: This TU27 antibody has been pre-titrated and tested by flow cytometric analysis of normal human peripheral blood cells. This can be used at 5 µL (0.5 µg) per test. A test is defined as the amount (µg) of antibody that will stain a cell sample in a final volume of 100 µL. Cell number should be determined empirically but can range from 10^5 to 10^8 cells /test.

Excitation: 488 nm; Emission: 520 nm; Laser: Blue Laser.

Filtration: 0.2 µm post-manufacturing filtered.

Product Images For CD122 Monoclonal Antibody (TU27), FITC, eBioscience™



CD122 Antibody (11-1228-42) in Flow
Staining of normal human peripheral blood cells with Anti-Human CD56 (NCAM) APC (Product # 17-0567-42) and Mouse IgG1 K Isotype Control FITC (Product # 11-4714-42) (left) or Anti-Human CD122 FITC (right). Cells in the lymphocyte gate were used for analysis.

2 References

Flow Cytometry (2)

Retrovirology		Year 2020
Longitudinal analysis of subtype C envelope tropism for memory CD4⁺ T cell subsets over the first 3 years of untreated HIV-1 infection.		
"Published figure using CD122 monoclonal antibody (Product # 11-1228-42) in Flow Cytometry"		
Authors: Gartner MJ,Gorry PR,Tumpach C,Zhou J,Dantanarayana A,Chang JJ,Angelovich TA,Ellenberg P,Laumaea AE,Nonyane M,Moore PL,Lewin SR,Churchill MJ,Flynn JK,Roche M		
The Journal of experimental medicine		Year 2019
A novel human <i>IL2RB</i> mutation results in T and NK cell-driven immune dysregulation.		Species Human
"11-1228 was used in Flow cytometry/Cell sorting to investigate the clinical and immunological phenotypes of two siblings with the first described human IL-2R defect."		
Authors: Fernandez IZ,Baxter RM,Garcia-Perez JE,Vendrame E,Ranganath T,Kong DS,Lundquist K,Nguyen T,Ogolla S,Black J,Galampos C,Gumbart JC,Dawany N,Kelsen JR,de Zoeten EF,Quinones R,Eissa H,Verneris MR,Sullivan KE,Rochford R,Blish CA,Kedl RM,Dutmer CM,Hsieh EWY		

For Research Use Only. Not for use in diagnostic procedures. Not for resale without express authorization. Products are warranted to operate or perform substantially in conformance with published Product specifications in effect at the time of sale, as set forth in the Production documentation, specifications and/or accompanying package inserts ("Documentation"). No claim of suitability for use in applications regulated by FDA is made. The warranty provided herein is valid only when used by properly trained individuals. Unless otherwise stated in the Documentation, this warranty is limited to one year from date of shipment when the Product is subjected to normal, proper and intended usage. This warranty does not extend to anyone other than the Buyer. Any model or sample furnished to Buyer is merely illustrative of the general type and quality of goods and does not represent that any Product will conform to such model or sample. NO OTHER WARRANTIES, EXPRESS OR IMPLIED, ARE GRANTED INCLUDING WITHOUT LIMITATION, IMPLIED WARRANTIES OF MERCHANTABILITY, FITNESS FOR ANY PARTICULAR PURPOSE, OR NON INFRINGEMENT. BUYER'S EXCLUSIVE REMEDY FOR NON-CONFORMING PRODUCTS DURING THE WARRANTY PERIOD IS LIMITED TO REPAIR, REPLACEMENT OF OR REFUND FOR THE NON-CONFORMING PRODUCT(S) AT SELLER'S SOLE OPTION. THERE IS NO OBLIGATION TO REPAIR, REPLACE OR REFUND FOR PRODUCTS AS THE RESULT OF (i) ACCIDENT, DISASTER OR EVENT OF FORCE MAJEURE, (ii) MISUSE, FAULT OR NEGLIGENCE OF OR BY BUYER, (iii) USE OF THE PRODUCTS IN A MANNER FOR WHICH THEY WERE NOT DESIGNED, OR (iv) IMPROPER STORAGE AND HANDLING OF THE PRODUCTS. Unless otherwise expressly stated on the Product or in the documentation accompanying the Product, the Product is intended for research only and is not to be used for any other purpose, including without limitation, unauthorized commercial uses, in vitro diagnostic uses, ex vivo or in vivo therapeutic uses, or any type of consumption by or application to human or animals.