

Kappa Light Chain Monoclonal Antibody (TB28-2), FITC, eBioscience™

Product Details	
Size	100 Tests
Species Reactivity	Human
Published Species	Human
Host/Isotype	Mouse / IgG1, kappa
Recommended Isotype Control	Mouse IgG1 kappa Isotype Control (P3.6.2.8.1), FITC, eBioscience™
Class	Monoclonal
Type	Antibody
Clone	TB28-2
Conjugate	FITC
Excitation/Emission Max	498/517 nm
Form	Liquid
Concentration	5 µL/Test
Purification	Affinity chromatography
Storage buffer	PBS, pH 7.2, with 0.2% BSA
Contains	0.09% sodium azide
Storage conditions	4° C, store in dark, DO NOT FREEZE!
RRID	AB_1724129

Applications	Tested Dilution	Publications
Flow Cytometry (Flow)	5 µL (0.5 µg)/test	1 Publication
ELISA (ELISA)	-	1 Publication

Product Specific Information

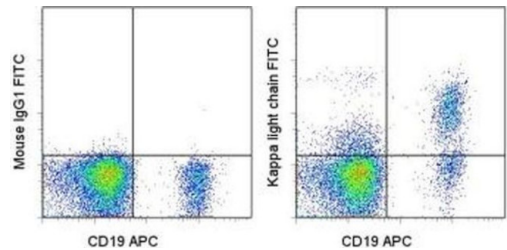
Description: The monoclonal antibody TB28-2 recognizes the kappa light chain of human immunoglobulin. Approximately 22-kDa, the Ig kappa chain is comprised of one variable and one constant region. Two kappa chains together with the heavy chain comprise the whole Ig structure. Expression of Ig kappa is typically found on more than half of B lymphocytes.

Applications Reported: This TB28-2 antibody has been reported for use in flow cytometric analysis.

Applications Tested: This TB28-2 antibody has been pre-titrated and tested by flow cytometric analysis of normal peripheral blood cells. This can be used at 5 µL (0.5 µg) per test. A test is defined as the amount (µg) of antibody that will stain a cell sample in a final volume of 100 µL. Cell number should be determined empirically but can range from 10⁵ to 10⁸ cells/test.

Excitation: 488 nm; **Emission:** 520 nm; **Laser:** Blue Laser.

Filtration: 0.2 µm post-manufacturing filtered.



Kappa Light Chain Antibody (11-9970-42) in Flow
Normal human peripheral blood cells with stained Anti-Human CD19 APC (Product # 17-0199-42) and Mouse IgG1 k Isotype Control FITC (Product # 11-4714-42) (left) or Anti-Human Ig kappa Light Chain FITC (right). Cells in the lymphocyte gate were used for analysis.

2 References

Flow Cytometry (1)

<p>PloS one</p> <p>Reformatting Rituximab into Human IgG2 and IgG4 Isotypes Dramatically Improves Apoptosis Induction In Vitro.</p> <p>"11-9970 was used in Flow cytometry/Cell sorting to investigate the impact on the apoptotic ability of Rituximab when the IgG isotype is switched."</p> <p>Authors: Könitzer JD,Sieron A,Wacker A,Enenkel B</p>	<p>Year 2016</p> <p>Species Human</p>
---	---

ELISA (1)

<p>Nature communications</p> <p>Sensing and responding to allergic response cytokines through a genetically encoded circuit.</p> <p>"11-9970 was used in an ELISA assay to assess the therapeutic potential of sensing and responding to disease-associated cytokines through a genetically encoded circuit in the treatment of allergies."</p> <p>Authors: Chassin H,Geering B,Schukur L,Ausländer D,Lang B,Fussenegger M</p>	<p>Year 2017</p> <p>Species Human</p>
---	---

For Research Use Only. Not for use in diagnostic procedures. Not for resale without express authorization. Products are warranted to operate or perform substantially in conformance with published Product specifications in effect at the time of sale, as set forth in the Production documentation, specifications and/or accompanying package inserts ("Documentation"). No claim of suitability for use in applications regulated by FDA is made. The warranty provided herein is valid only when used by properly trained individuals. Unless otherwise stated in the Documentation, this warranty is limited to one year from date of shipment when the Product is subjected to normal, proper and intended usage. This warranty does not extend to anyone other than the Buyer. Any model or sample furnished to Buyer is merely illustrative of the general type and quality of goods and does not represent that any Product will conform to such model or sample. NO OTHER WARRANTIES, EXPRESS OR IMPLIED, ARE GRANTED INCLUDING WITHOUT LIMITATION, IMPLIED WARRANTIES OF MERCHANTABILITY, FITNESS FOR ANY PARTICULAR PURPOSE, OR NON INFRINGEMENT. BUYER'S EXCLUSIVE REMEDY FOR NON-CONFORMING PRODUCTS DURING THE WARRANTY PERIOD IS LIMITED TO REPAIR, REPLACEMENT OF OR REFUND FOR THE NON-CONFORMING PRODUCT(S) AT SELLER'S SOLE OPTION. THERE IS NO OBLIGATION TO REPAIR, REPLACE OR REFUND FOR PRODUCTS AS THE RESULT OF (I) ACCIDENT, DISASTER OR EVENT OF FORCE MAJEURE, (II) MISUSE, FAULT OR NEGLIGENCE OF OR BY BUYER, (III) USE OF THE PRODUCTS IN A MANNER FOR WHICH THEY WERE NOT DESIGNED, OR (IV) IMPROPER STORAGE AND HANDLING OF THE PRODUCTS. Unless otherwise expressly stated on the Product or in the documentation accompanying the Product, the Product is intended for research only and is not to be used for any other purpose, including without limitation, unauthorized commercial uses, in vitro diagnostic uses, ex vivo or in vivo therapeutic uses, or any type of consumption by or application to human or animals.