

CD2 Monoclonal Antibody (RM2-5), PE, eBioscience™

Product Details	
Size	100 µg
Species Reactivity	Mouse
Published Species	Mouse
Host/Isotype	Rat / IgG2b, lambda
Recommended Isotype Control	Rat IgG2b kappa Isotype Control (eB149/10H5), PE, eBioscience™
Class	Monoclonal
Type	Antibody
Clone	RM2-5
Conjugate	PE
Excitation/Emission Max	565/576 nm
Form	Liquid
Concentration	0.2 mg/mL
Purification	Affinity chromatography
Storage buffer	PBS, pH 7.2
Contains	0.09% sodium azide
Storage conditions	4° C, store in dark, DO NOT FREEZE!
RRID	AB_465488

Applications	Tested Dilution	Publications
Flow Cytometry (Flow)	0.25 µg/test	5 Publications

Product Specific Information

Description: The RM2-5 monoclonal antibody reacts with the mouse CD2 molecule, an approximately 50-55 kDa cell surface receptor expressed by all mouse lymphocytes. Expression of the CD2 antigen in the mouse differs from that of the human in that B lineage cells in the mouse from the pre-B cell stage to mature B cells express CD2. CD2 is a ligand for CD48 in the mouse and is involved in adhesion and activation of T cells.

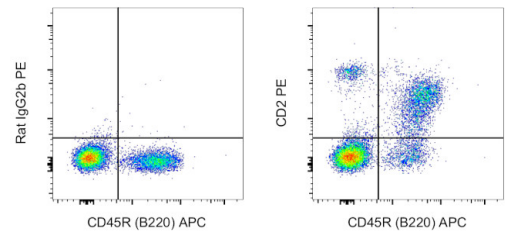
Applications Reported: The RM2-5 antibody has been reported for use in flow cytometric analysis.

Applications Tested: This RM2-5 antibody has been tested by flow cytometric analysis of mouse splenocytes and bone marrow cells. This can be used at less than or equal to 0.25 µg per test. A test is defined as the amount (µg) of antibody that will stain a cell sample in a final volume of 100 µL. Cell number should be determined empirically but can range from 10⁵ to 10⁸ cells /test. It is recommended that the antibody be carefully titrated for optimal performance in the assay of interest.

Excitation: 488-561 nm; **Emission:** 578 nm; **Laser:** Blue Laser, Green Laser, Yellow-Green Laser.

Filtration: 0.2 µm post-manufacturing filtered.

Product Images For CD2 Monoclonal Antibody (RM2-5), PE, eBioscience™



CD2 Antibody (12-0021-82) in Flow
Mouse splenocytes were stained with CD45R (B220) Monoclonal Antibody, APC (Product # 17-0452-82) and 0.125 µg of Rat IgG2b kappa Isotype Control, PE (Product # 12-4031-83) (left) or 0.125 µg of CD2 Monoclonal Antibody, PE (right). Total viable cells were used for analysis, as determined by 7-AAD (Product # 00-6993-50).

5 References

Flow Cytometry (5)

<p>eLife</p> <p>Clec11a/osteolectin is an osteogenic growth factor that promotes the maintenance of the adult skeleton.</p> <p>"12-0021 was used in Flow cytometry/Cell sorting to study how Clec11a/Osteolectin maintains the adult skeleton by promoting the differentiation of mesenchymal progenitors into mature osteoblasts."</p> <p>Authors: Yue R,Shen B,Morrison SJ</p>	<p>Year 2016</p> <p>Species Mouse</p> <p>Dilution 1:200</p>
<p>Journal of immunology (Baltimore, Md. : 1950)</p> <p>Enhancing T lineage production in aged mice: a novel function of Foxn1 in the bone marrow niche.</p> <p>"12-0021 was used in Flow cytometry/Cell sorting to report that Foxn1 is expressed in wild-type BM and overexpressed in Foxn1Tg."</p> <p>Authors: Zook EC,Zhang S,Gerstein RM,Witte PL,Le PT</p>	<p>Year 2013</p> <p>Species Mouse</p>

[View more Flow references on thermofisher.cn](#)

More applications with references on thermofisher.cn

For Research Use Only. Not for use in diagnostic procedures. Not for resale without express authorization. Products are warranted to operate or perform substantially in conformance with published Product specifications in effect at the time of sale, as set forth in the Production documentation, specifications and/or accompanying package inserts ("Documentation"). No claim of suitability for use in applications regulated by FDA is made. The warranty provided herein is valid only when used by properly trained individuals. Unless otherwise stated in the Documentation, this warranty is limited to one year from date of shipment when the Product is subjected to normal, proper and intended usage. This warranty does not extend to anyone other than the Buyer. Any model or sample furnished to Buyer is merely illustrative of the general type and quality of goods and does not represent that any Product will conform to such model or sample. NO OTHER WARRANTIES, EXPRESS OR IMPLIED, ARE GRANTED INCLUDING WITHOUT LIMITATION, IMPLIED WARRANTIES OF MERCHANTABILITY, FITNESS FOR ANY PARTICULAR PURPOSE, OR NON INFRINGEMENT. BUYER'S EXCLUSIVE REMEDY FOR NON-CONFORMING PRODUCTS DURING THE WARRANTY PERIOD IS LIMITED TO REPAIR, REPLACEMENT OF OR REFUND FOR THE NON-CONFORMING PRODUCT(S) AT SELLER'S SOLE OPTION. THERE IS NO OBLIGATION TO REPAIR, REPLACE OR REFUND FOR PRODUCTS AS THE RESULT OF (I) ACCIDENT, DISASTER OR EVENT OF FORCE MAJEURE, (II) MISUSE, FAULT OR NEGLIGENCE OF OR BY BUYER, (III) USE OF THE PRODUCTS IN A MANNER FOR WHICH THEY WERE NOT DESIGNED, OR (IV) IMPROPER STORAGE AND HANDLING OF THE PRODUCTS. Unless otherwise expressly stated on the Product or in the documentation accompanying the Product, the Product is intended for research only and is not to be used for any other purpose, including without limitation, unauthorized commercial uses, in vitro diagnostic uses, ex vivo or in vivo therapeutic uses, or any type of consumption by or application to human or animals.