

CD14 Monoclonal Antibody (Sa2-8), PE, eBioscience™

Product Details	
Size	100 µg
Species Reactivity	Mouse
Published Species	Mouse, Human
Host/Isotype	Rat / IgG2a, kappa
Recommended Isotype Control	Rat IgG2a kappa Isotype Control (eBR2a), PE, eBioscience™
Class	Monoclonal
Type	Antibody
Clone	Sa2-8
Conjugate	PE
Excitation/Emission Max	565/576 nm
Form	Liquid
Concentration	0.2 mg/mL
Purification	Affinity chromatography
Storage buffer	PBS, pH 7.2
Contains	0.09% sodium azide
Storage conditions	4° C, store in dark, DO NOT FREEZE!
RRID	AB_465563

Applications	Tested Dilution	Publications
Immunocytochemistry (ICC/IF)	-	2 Publications
Flow Cytometry (Flow)	0.5 µg/test	31 Publications

Product Specific Information

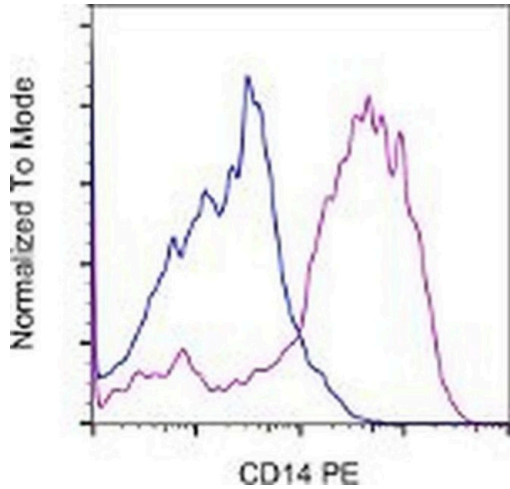
Description: The Sa2-8 monoclonal antibody reacts with mouse CD14, a 53-55 kDa GPI-linked glycoprotein. CD14 is a receptor for the complexes of LPS and LBP (LPS-Binding Protein) and is shown to associate with Toll-Like Receptor 4 (TLR4) and participate in the signaling and cellular response to bacterial LPS. In mouse, CD14 is expressed on the surface of macrophages and under certain conditions is also found in the serum in a secreted form. Sa2-8 has weak antagonistic activity (in NF-kappaB activation or TNF alpha production with LPS stimulation).

Applications Reported: The Sa2-8 antibody has been reported for use in flow cytometric analysis.

Applications Tested: This Sa2-8 antibody has been tested by flow cytometric analysis of mouse thioglycolate-elicited peritoneal exudate cells. This can be used at less than or equal to 0.5 µg per test. A test is defined as the amount (µg) of antibody that will stain a cell sample in a final volume of 100 µL. Cell number should be determined empirically but can range from 10⁵ to 10⁸ cells/test. It is recommended that the antibody be carefully titrated for optimal performance in the assay of interest.

Excitation: 488-561 nm; **Emission:** 578 nm; **Laser:** Blue Laser, Green Laser, Yellow-Green Laser.

Filtration: 0.2 µm post-manufacturing filtered.



CD14 Antibody (12-0141-82) in Flow
Staining of mouse thioglycolate-elicited peritoneal exudate cells with 0.25 µg of Rat IgG2a K Isotype Control PE (Product # 12-4321-80) (blue histogram) or 0.25 µg of Anti-Mouse CD14 PE (purple histogram). Total viable cells were used for analysis.

[View more figures on thermofisher.cn](https://thermofisher.cn)

Immunocytochemistry (2)

<p>The Journal of clinical investigation</p> <p>Alternatively activated macrophages determine repair of the infarcted adult murine heart.</p> <p>"12-0141 was used in Immunocytochemistry to study repair of the infarcted adult murine heart determined by alternatively activated macrophages."</p> <p>Authors: Shiraishi M, Shintani Y, Shintani Y, Ishida H, Saba R, Yamaguchi A, Adachi H, Yashiro K, Suzuki K</p>	<p>Year 2016</p> <p>Species Mouse</p> <p>Dilution 1:20</p>
---	---

<p>Biomaterials</p> <p>Multinucleated giant cells from fibroblast cultures.</p> <p>"12-0141 was used in Immunofluorescence to investigate giant multinucleated cells."</p> <p>Authors: Holt DJ, Grainger DW</p>	<p>Year 2011</p> <p>Species Mouse</p> <p>Dilution 1:100</p>
---	--

Flow Cytometry (31)

<p>Acta biochimica et biophysica Sinica</p> <p>Macrophage polarization is involved in liver fibrosis induced by α_1-adrenoceptor autoantibody.</p> <p>"Published figure using CD14 monoclonal antibody (Product # 12-0141-82) in Flow Cytometry"</p> <p>Authors: Wu Y, Fan X, Yu H, Liu J, Duan Y, Zhang S, Yan L, Du Y, Liu H</p>	<p>Year 2022</p>
--	-----------------------------

<p>Scientific reports</p> <p>Early activation of the cardiac CX3CL1/CX3CR1 axis delays -adrenergic-induced heart failure.</p> <p>"Published figure using CD14 monoclonal antibody (Product # 12-0141-82) in Flow Cytometry"</p> <p>Authors: Flamant M, Mougenot N, Balse E, Le Fèvre L, Atassi F, Gautier EL, Le Goff W, Keck M, Nadaud S, Combadière C, Boissonnas A, Pavoine C</p>	<p>Year 2021</p>
--	-----------------------------

[View more Flow references on thermofisher.cn](#)

More applications with references on thermofisher.cn

For Research Use Only. Not for use in diagnostic procedures. Not for resale without express authorization. Products are warranted to operate or perform substantially in conformance with published Product specifications in effect at the time of sale, as set forth in the Production documentation, specifications and/or accompanying package inserts ("Documentation"). No claim of suitability for use in applications regulated by FDA is made. The warranty provided herein is valid only when used by properly trained individuals. Unless otherwise stated in the Documentation, this warranty is limited to one year from date of shipment when the Product is subjected to normal, proper and intended usage. This warranty does not extend to anyone other than the Buyer. Any model or sample furnished to Buyer is merely illustrative of the general type and quality of goods and does not represent that any Product will conform to such model or sample. NO OTHER WARRANTIES, EXPRESS OR IMPLIED, ARE GRANTED INCLUDING WITHOUT LIMITATION, IMPLIED WARRANTIES OF MERCHANTABILITY, FITNESS FOR ANY PARTICULAR PURPOSE, OR NON INFRINGEMENT. BUYER'S EXCLUSIVE REMEDY FOR NON-CONFORMING PRODUCTS DURING THE WARRANTY PERIOD IS LIMITED TO REPAIR, REPLACEMENT OF OR REFUND FOR THE NON-CONFORMING PRODUCT(S) AT SELLER'S SOLE OPTION. THERE IS NO OBLIGATION TO REPAIR, REPLACE OR REFUND FOR PRODUCTS AS THE RESULT OF (I) ACCIDENT, DISASTER OR EVENT OF FORCE MAJEURE, (II) MISUSE, FAULT OR NEGLIGENCE OF OR BY BUYER, (III) USE OF THE PRODUCTS IN A MANNER FOR WHICH THEY WERE NOT DESIGNED, OR (IV) IMPROPER STORAGE AND HANDLING OF THE PRODUCTS. Unless otherwise expressly stated on the Product or in the documentation accompanying the Product, the Product is intended for research only and is not to be used for any other purpose, including without limitation, unauthorized commercial uses, in vitro diagnostic uses, ex vivo or in vivo therapeutic uses, or any type of consumption by or application to human or animals.