

CD135 (Flt3) Monoclonal Antibody (BV10A4H2), PE, eBioscience™

Product Details	
Size	100 Tests
Species Reactivity	Human
Published Species	Human
Host/Isotype	Mouse / IgG1
Recommended Isotype Control	Mouse IgG1 kappa Isotype Control (P3.6.2.8.1), PE, eBioscience™
Class	Monoclonal
Type	Antibody
Clone	BV10A4H2
Conjugate	PE
Excitation/Emission Max	565/576 nm
Immunogen	BV-173 leukemic cell line
Form	Liquid
Concentration	5 µL/Test
Purification	Affinity chromatography
Storage buffer	PBS, pH 7.2, with 0.2% BSA
Contains	0.09% sodium azide
Storage conditions	4° C, store in dark, DO NOT FREEZE!
RRID	AB_10596974

Applications	Tested Dilution	Publications
Flow Cytometry (Flow)	5 µL (0.5 µg)/test	2 Publications

Product Specific Information

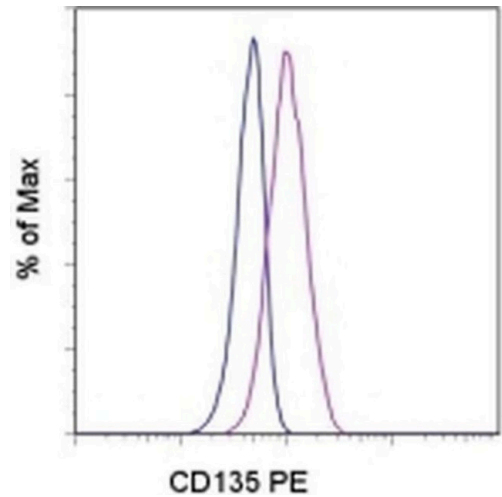
Description: The BV10A4H2 monoclonal antibody reacts with Human CD135, also known as Flk2 or Flt3. A member of the tyrosine kinase receptor family, this 135-150 kDa molecule is expressed by multipotential progenitor cells including primitive B cell and myelomonocytic progenitors in fetal liver and adult bone marrow.

Applications Reported: The BV10A4H2 antibody has been reported for use in flow cytometric analysis.

Applications Tested: This BV10A4H2 antibody has been pre-titrated and tested by flow cytometric analysis of REH cell line. This can be used at 5 µL (0.5 µg) per test. A test is defined as the amount (µg) of antibody that will stain a cell sample in a final volume of 100 µL. Cell number should be determined empirically but can range from 10^5 to 10^8 cells/test.

Excitation: 488-561 nm; Emission: 578 nm; Laser: Blue Laser, Green Laser, Yellow-Green Laser.

Filtration: 0.2 µm post-manufacturing filtered.



CD135 (Flt3) Antibody (12-1357-42) in Flow
Staining of REH cell line with Mouse IgG1 kappa Isotype Control PE (Product # 12-4714-81) (blue histogram) or Anti-Human CD135 (Flt3) PE (purple histogram). Total viable cells were used for analysis.

2 References

Flow Cytometry (2)

<p>The Journal of experimental medicine</p> <p>IL1RAP potentiates multiple oncogenic signaling pathways in AML.</p> <p>"12-1357 was used in Flow cytometry/Cell sorting to show that targeting of interleukin-1 receptor accessory protein via RNA interference, genetic deletion, or antibodies inhibits acute myeloid leukaemia pathogenesis in vitro and in vivo."</p> <p>Authors: Mitchell K,Barreyro L,Todorova TI,Taylor SJ,Antony-Debré I,Narayanagari SR,Carvajal LA,Leite J,Piperdi Z, Pendurti G,Mantzaris I,Paietta E,Verma A,Gritsman K,Steidl U</p>	<p>Year 2018</p> <p>Species Human</p>
<p>Nature communications</p> <p>SF3B1 mutant MDS-initiating cells may arise from the haematopoietic stem cell compartment.</p> <p>"12-1357 was used in Flow cytometry/Cell sorting to demonstrate that mutations to SF3B1 can arise from CD34(+)CD38 (-)CD45RA(-)CD90(+)CD49f(+) haematopoietic stem cells and is an initiating event in myelodysplastic syndrome patients."</p> <p>Authors: Mian SA,Rouault-Pierre K,Smith AE,Seidl T,Pizzitola I,Kizilors A,Kulasekararaj AG,Bonnet D,Mufti GJ</p>	<p>Year 2015</p> <p>Species Human</p>

For Research Use Only. Not for use in diagnostic procedures. Not for resale without express authorization. Products are warranted to operate or perform substantially in conformance with published Product specifications in effect at the time of sale, as set forth in the Production documentation, specifications and/or accompanying package inserts ("Documentation"). No claim of suitability for use in applications regulated by FDA is made. The warranty provided herein is valid only when used by properly trained individuals. Unless otherwise stated in the Documentation, this warranty is limited to one year from date of shipment when the Product is subjected to normal, proper and intended usage. This warranty does not extend to anyone other than the Buyer. Any model or sample furnished to Buyer is merely illustrative of the general type and quality of goods and does not represent that any Product will conform to such model or sample. NO OTHER WARRANTIES, EXPRESS OR IMPLIED, ARE GRANTED INCLUDING WITHOUT LIMITATION, IMPLIED WARRANTIES OF MERCHANTABILITY, FITNESS FOR ANY PARTICULAR PURPOSE, OR NON-INFRINGEMENT. BUYER'S EXCLUSIVE REMEDY FOR NON-CONFORMING PRODUCTS DURING THE WARRANTY PERIOD IS LIMITED TO REPAIR, REPLACEMENT OF OR REFUND FOR THE NON-CONFORMING PRODUCT(S) AT SELLER'S SOLE OPTION. THERE IS NO OBLIGATION TO REPAIR, REPLACE OR REFUND FOR PRODUCTS AS THE RESULT OF (i) ACCIDENT, DISASTER OR EVENT OF FORCE MAJEURE, (ii) MISUSE, FAULT OR NEGLIGENCE OF OR BY BUYER, (iii) USE OF THE PRODUCTS IN A MANNER FOR WHICH THEY WERE NOT DESIGNED, OR (iv) IMPROPER STORAGE AND HANDLING OF THE PRODUCTS. Unless otherwise expressly stated on the Product or in the documentation accompanying the Product, the Product is intended for research only and is not to be used for any other purpose, including without limitation, unauthorized commercial uses, in vitro diagnostic uses, ex vivo or in vivo therapeutic uses, or any type of consumption by or application to human or animals.