

CD203c Monoclonal Antibody (NP4D6), PE, eBioscience™

Product Details	
Size	100 Tests
Species Reactivity	Human
Published Species	Human
Host/Isotype	Mouse / IgG1, kappa
Recommended Isotype Control	Mouse IgG1 kappa Isotype Control (P3.6.2.8.1), PE, eBioscience™
Class	Monoclonal
Type	Antibody
Clone	NP4D6
Conjugate	PE
Excitation/Emission Max	565/576 nm
Form	Liquid
Concentration	5 µL/Test
Purification	Affinity chromatography
Storage buffer	PBS, pH 7.2, with 0.2% BSA
Contains	0.09% sodium azide
Storage conditions	4° C, store in dark, DO NOT FREEZE!
RRID	AB_11219482

Applications	Tested Dilution	Publications
Flow Cytometry (Flow)	5 µL (0.06 µg)/test	2 Publications

Product Specific Information

Description: This NP4D6 monoclonal antibody reacts with human CD203c, which is also known as ectonucleotide pyrophosphatase/phosphodiesterase 3 (E-NPP3). ENPP family members catalyze the hydrolysis of pyrophosphate and phosphodiester bonds to nucleoside 5-monophosphates. A type II transmembrane protein, CD203c is expressed on basophils and mast cells. CD203c expression is upregulated on basophils activated by allergen or IgE crosslinking. Therefore, CD203c is used as an indicator of basophil activation in various IgE-mediated allergic responses.

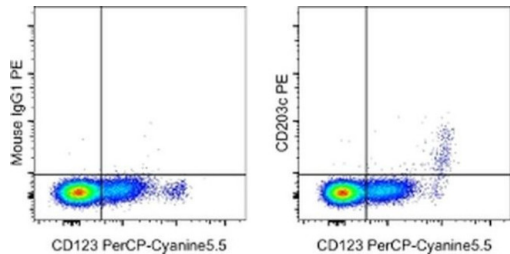
Applications Reported: This NP4D6 antibody has been reported for use in flow cytometric analysis.

Applications Tested: This NP4D6 antibody has been pre-titrated and tested by flow cytometric analysis of normal human peripheral blood cells. This can be used at 5 µL (0.06 µg) per test. A test is defined as the amount (µg) of antibody that will stain a cell sample in a final volume of 100 µL. Cell number should be determined empirically but can range from 10⁵ to 10⁸ cells/test.

Excitation: 488-561 nm; **Emission:** 578 nm; **Laser:** Blue Laser, Green Laser, Yellow-Green Laser.

Filtration: 0.2 µm post-manufacturing filtered.

Product Images For CD203c Monoclonal Antibody (NP4D6), PE, eBioscience™



CD203c Antibody (12-2039-42) in Flow
Staining of normal human peripheral blood cells with Anti-Human CD123 PerCP-Cyanine5-5 (Product # 45-1239-42) and Mouse IgG1 K Isotype Control PE (Product # 12-4714-81) (left) or Anti-Human CD203c PE (right). Cells in the lymphocyte gate were used for analysis.

2 References

Flow Cytometry (2)

Immunity	
Human Mast Cell Proteome Reveals Unique Lineage, Putative Functions, and Structural Basis for Cell Ablation.	Year 2020
"12-2039 was used in Flow cytometry/Cell sorting to identify a mast-cell-specific proteome signature, indicative of a unique lineage, only distantly related to other immune cell types, including innate immune cells."	Species Human
Authors: Plum T,Wang X,Rettel M,Krijgsveld J,Feyerabend TB,Rodewald HR	
The Journal of allergy and clinical immunology	
Suppression of the immunologic response to peanut during immunotherapy is often transient.	Year 2015
"12-2039 was used in Flow cytometry/Cell sorting to show that OIT and SLIT for peanut allergy induce rapid suppression of many arms of the immune response, but these effects are often transient."	Species Human
Authors: Gorelik M,Narisety SD,Guerrero AL,Chichester KL,Keet CA,Bieneman AP,Hamilton RG,Wood RA,Schroeder JT,Frischmeyer-Guerrero PA	

For Research Use Only. Not for use in diagnostic procedures. Not for resale without express authorization. Products are warranted to operate or perform substantially in conformance with published Product specifications in effect at the time of sale, as set forth in the Production documentation, specifications and/or accompanying package inserts ("Documentation"). No claim of suitability for use in applications regulated by FDA is made. The warranty provided herein is valid only when used by properly trained individuals. Unless otherwise stated in the Documentation, this warranty is limited to one year from date of shipment when the Product is subjected to normal, proper and intended usage. This warranty does not extend to anyone other than the Buyer. Any model or sample furnished to Buyer is merely illustrative of the general type and quality of goods and does not represent that any Product will conform to such model or sample. NO OTHER WARRANTIES, EXPRESS OR IMPLIED, ARE GRANTED INCLUDING WITHOUT LIMITATION, IMPLIED WARRANTIES OF MERCHANTABILITY, FITNESS FOR ANY PARTICULAR PURPOSE, OR NON-INFRINGEMENT. BUYER'S EXCLUSIVE REMEDY FOR NON-CONFORMING PRODUCTS DURING THE WARRANTY PERIOD IS LIMITED TO REPAIR, REPLACEMENT OF OR REFUND FOR THE NON-CONFORMING PRODUCT(S) AT SELLER'S SOLE OPTION. THERE IS NO OBLIGATION TO REPAIR, REPLACE OR REFUND FOR PRODUCTS AS THE RESULT OF (I) ACCIDENT, DISASTER OR EVENT OF FORCE MAJEURE, (II) MISUSE, FAULT OR NEGLIGENCE OF OR BY BUYER, (III) USE OF THE PRODUCTS IN A MANNER FOR WHICH THEY WERE NOT DESIGNED, OR (IV) IMPROPER STORAGE AND HANDLING OF THE PRODUCTS. Unless otherwise expressly stated on the Product or in the documentation accompanying the Product, the Product is intended for research only and is not to be used for any other purpose, including without limitation, unauthorized commercial uses, in vitro diagnostic uses, ex vivo or in vivo therapeutic uses, or any type of consumption by or application to human or animals.