

TCR V delta 1 Monoclonal Antibody (TS8.2), PE, eBioscience™

Product Details

Size	100 Tests
Species Reactivity	Human
Host/Isotype	Mouse / IgG1, kappa
Recommended Isotype Control	Mouse IgG1 kappa Isotype Control (P3.6.2.8.1), PE, eBioscience™
Class	Monoclonal
Type	Antibody
Clone	TS8.2
Conjugate	PE
Excitation/Emission Max	565/576 nm
Immunogen	Full length protein of Human TCR delta v1
Form	Liquid
Concentration	5 µL/Test
Purification	Affinity chromatography
Storage buffer	PBS, pH 7.2, with 0.2% BSA
Contains	0.09% sodium azide
Storage conditions	4° C, store in dark, DO NOT FREEZE!
RRID	AB_2762432

Applications

Tested Dilution

Publications

Flow Cytometry (Flow)	5 µL (0.25 µg)/test	1 Publication
-----------------------	---------------------	---------------

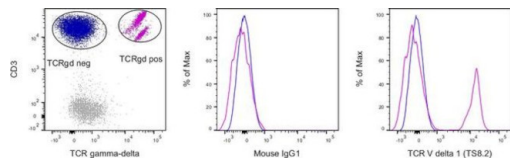
Product Specific Information

Description: This TS8.2 monoclonal antibody recognizes human TCR V delta 1, a common framework determinant on the delta-subunit of the T cell receptor. Gamma-delta T cells are primarily found within the epithelium. They show less TCR diversity and recognize antigens differently than alpha-beta T cells. Subsets of gamma-delta T cells have shown antitumor and immunoregulatory activity. TCR V delta 1 Monoclonal Antibody (TS8.2) has been validated for the following applications: Flow Cytometry.

Applications Reported: This TS8.2 antibody has been reported for use in flow cytometric analysis.

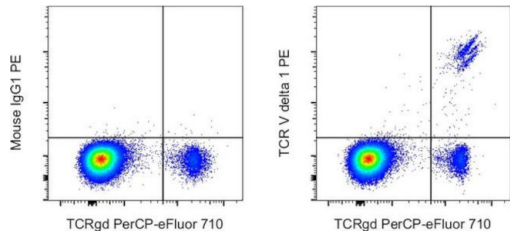
Applications Tested: This TS8.2 antibody has been pre-diluted and tested by flow cytometric analysis of normal human peripheral blood cells. This may be used at 5 µL (0.25 µg) per test. A test is defined as the amount (µg) of antibody that will stain a cell sample in a final volume of 100 µL. Cell number should be determined empirically but can range from 10⁵ to 10⁸ cells/test.

Excitation: 488-561 nm; Emission: 578 nm; Laser: Blue Laser, Green Laser, Yellow-Green Laser



TCR V delta 1 Antibody (12-5679-42)

A subpopulation of TCR gamma-delta positive CD3+ cells (purple) but none of TCR gamma-delta negative CD3+ cells (blue) stain positive for TCR V delta 1. Details: Normal human peripheral blood cells were stained with CD3 Monoclonal Antibody (clone UCHT1) and TCR gamma-delta Monoclonal Antibody (clone B1.1) followed by intracellular staining with Mouse IgG1 kappa Isotype Control (clone P3.6.2.8.1, middle plot) or TCR V delta 1 Monoclonal Antibody (clone TS8.2, right plot). Viable cells in the lymphocyte gate were used for analysis. {RE}



TCR V delta 1 Antibody (12-5679-42) in Flow

Normal human peripheral blood cells were stained with CD3 Monoclonal Antibody, APC (Product # 17-0038-42), TCR gamma-delta Monoclonal Antibody, PerCP-eFluor 710 (Product # 46-9959-42) and either Mouse IgG1 kappa Isotype Control, PE (Product # 12-4714-82) (left) or TCR beta Monoclonal Antibody, PE (right). Viable CD3 positive lymphocytes were used for analysis.

1 Reference

Flow Cytometry (1)

Nature communications	Year
Cellular origins and genetic landscape of cutaneous gamma delta T cell lymphomas.	2020
"Published figure using TCR V delta 1 monoclonal antibody (Product # 12-5679-42) in Flow Cytometry"	
Authors: Daniels J,Doukas PG,Escala MEM,Ringbloom KG,Shih DJH,Yang J,Tegtmeyer K,Park J,Thomas JJ,Selli ME, Altunbulakli C,Gowthaman R,Mo SH,Jothishankar B,Pease DR,Pro B,Abdulla FR,Shea C,Sahni N,Gru AA,Pierce BG, Louissaint A,Guitart J,Choi J	

For Research Use Only. Not for use in diagnostic procedures. Not for resale without express authorization. Products are warranted to operate or perform substantially in conformance with published Product specifications in effect at the time of sale, as set forth in the Production documentation, specifications and/or accompanying package inserts ("Documentation"). No claim of suitability for use in applications regulated by FDA is made. The warranty provided herein is valid only when used by properly trained individuals. Unless otherwise stated in the Documentation, this warranty is limited to one year from date of shipment when the Product is subjected to normal, proper and intended usage. This warranty does not extend to anyone other than the Buyer. Any model or sample furnished to Buyer is merely illustrative of the general type and quality of goods and does not represent that any Product will conform to such model or sample. NO OTHER WARRANTIES, EXPRESS OR IMPLIED, ARE GRANTED INCLUDING WITHOUT LIMITATION, IMPLIED WARRANTIES OF MERCHANTABILITY, FITNESS FOR ANY PARTICULAR PURPOSE, OR NON INFRINGEMENT. BUYER'S EXCLUSIVE REMEDY FOR NON-CONFORMING PRODUCTS DURING THE WARRANTY PERIOD IS LIMITED TO REPAIR, REPLACEMENT OF OR REFUND FOR THE NON-CONFORMING PRODUCT(S) AT SELLER'S SOLE OPTION. THERE IS NO OBLIGATION TO REPAIR, REPLACE OR REFUND FOR PRODUCTS AS THE RESULT OF (I) ACCIDENT, DISASTER OR EVENT OF FORCE MAJEURE, (II) MISUSE, FAULT OR NEGLIGENCE OF OR BY BUYER, (III) USE OF THE PRODUCTS IN A MANNER FOR WHICH THEY WERE NOT DESIGNED, OR (IV) IMPROPER STORAGE AND HANDLING OF THE PRODUCTS. Unless otherwise expressly stated on the Product or in the documentation accompanying the Product, the Product is intended for research only and is not to be used for any other purpose, including without limitation, unauthorized commercial uses, in vitro diagnostic uses, ex vivo or in vivo therapeutic uses, or any type of consumption by or application to human or animals.