

Integrin beta 7 Monoclonal Antibody (FIB504), PE, eBioscience™

Product Details	
Size	100 Tests
Species Reactivity	Human, Mouse
Published Species	Human, Rhesus monkey
Host/Isotype	Rat / IgG2a, kappa
Recommended Isotype Control	Rat IgG2a kappa Isotype Control (eBR2a), PE, eBioscience™
Class	Monoclonal
Type	Antibody
Clone	FIB504
Conjugate	PE
Excitation/Emission Max	565/576 nm
Form	Liquid
Concentration	5 µL/Test
Purification	Affinity chromatography
Storage buffer	PBS, pH 7.2, with 0.2% BSA
Contains	0.09% sodium azide
Storage conditions	4° C, store in dark, DO NOT FREEZE!
RRID	AB_10853335

Applications	Tested Dilution	Publications
Flow Cytometry (Flow)	5 µL (0.125 µg)/test	4 Publications

Product Specific Information

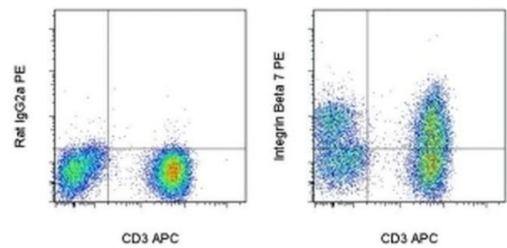
Description: The FIB504 monoclonal antibody reacts with human and mouse integrin beta 7. Integrin beta 7 is a 130 kD glycoprotein which associates with integrin alpha 4 (CD49d) to form the alpha 4 beta 7 integrin LPAM-1, expressed on intraepithelial lymphocytes. It also associates with alpha E (CD103) to form the alpha E beta 7 integrin HML-1, expressed on T cells adjacent to mucosal epithelium and intraepithelial lymphocytes. Main ligands for integrin alpha 4 beta 7 include VCAM-1 (CD106), MAdCAM-1 and fibronectin, while the main ligand of integrin alpha E beta 7 is E-cadherin (CD324). Integrin beta 7 plays an important role in the adhesion of leukocytes to endothelial cells promoting the transmigration of leukocytes to extravascular spaces during the inflammatory response. The FIB504 antibody has been reported to have blocking activity.

Applications Reported: This FIB504 antibody has been reported for use in flow cytometric analysis.

Applications Tested: This FIB504 antibody has been pre-titrated and tested by flow cytometric analysis of human peripheral blood cells. This can be used at 5 µL (0.125 µg) per test. A test is defined as the amount (µg) of antibody that will stain a cell sample in a final volume of 100 µL. Cell number should be determined empirically but can range from 10⁵ to 10⁸ cells/test.

Excitation: 488-561 nm; **Emission:** 578 nm; **Laser:** Blue Laser, Green Laser, Yellow-Green Laser.

Filtration: 0.2 µm post-manufacturing filtered.



Integrin beta 7 Antibody (12-5867-42) in Flow
Staining of normal human peripheral blood cells with Anti-Human CD3 APC (Product # 17-0037-42) and Rat IgG2a K Isotype Control PE (Product # 12-4321-80) (left) or Anti-Human/Mouse Integrin beta 7 PE (right). Cells in the lymphocyte gate were used for analysis.

4 References

Flow Cytometry (4)

<p>Journal of immunology (Baltimore, Md. : 1950)</p> <p>Species-specific differences in the expression and regulation of 47 integrin in various nonhuman primates.</p> <p>"12586742 was used in flow cytometry to analyze the expression of alpha4beta7-integrin in primate lymphocytes."</p> <p>Authors: Byraredddy SN,Sidell N,Arthos J,Cicala C,Zhao C,Little DM,Dunbar P,Yang GX,Pierzchalski K,Kane MA,Mayne AE,Song B,Soares MA,Villinger F,Fauci AS,Ansari AA</p>	<p>Year</p> <p>2015</p>
<p>PLoS pathogens</p> <p>Maintenance of intestinal Th17 cells and reduced microbial translocation in SIV-infected rhesus macaques treated with interleukin (IL)-21.</p> <p>"12-5867 was used in Flow cytometry/Cell sorting to discover whether IL-21 administration improves mucosal function in the context of pathogenic HIV/SIV infections."</p> <p>Authors: Pallikkuth S,Micci L,Ende ZS,Iriele RI,Cervasi B,Lawson B,McGary CS,Rogers KA,Else JG,Silvestri G,Easley K,Estes JD,Villinger F,Pahwa S,Paiardini M</p>	<p>Year</p> <p>2014</p> <p>Species</p> <p>Rhesus monkey</p>

[View more Flow references on thermofisher.cn](#)

For Research Use Only. Not for use in diagnostic procedures. Not for resale without express authorization. Products are warranted to operate or perform substantially in conformance with published Product specifications in effect at the time of sale, as set forth in the Production documentation, specifications and/or accompanying package inserts ("Documentation"). No claim of suitability for use in applications regulated by FDA is made. The warranty provided herein is valid only when used by properly trained individuals. Unless otherwise stated in the Documentation, this warranty is limited to one year from date of shipment when the Product is subjected to normal, proper and intended usage. This warranty does not extend to anyone other than the Buyer. Any model or sample furnished to Buyer is merely illustrative of the general type and quality of goods and does not represent that any Product will conform to such model or sample. NO OTHER WARRANTIES, EXPRESS OR IMPLIED, ARE GRANTED INCLUDING WITHOUT LIMITATION, IMPLIED WARRANTIES OF MERCHANTABILITY, FITNESS FOR ANY PARTICULAR PURPOSE, OR NON-INFRINGEMENT. BUYER'S EXCLUSIVE REMEDY FOR NON-CONFORMING PRODUCTS DURING THE WARRANTY PERIOD IS LIMITED TO REPAIR, REPLACEMENT OF OR REFUND FOR THE NON-CONFORMING PRODUCT(S) AT SELLER'S SOLE OPTION. THERE IS NO OBLIGATION TO REPAIR, REPLACE OR REFUND FOR PRODUCTS AS THE RESULT OF (i) ACCIDENT, DISASTER OR EVENT OF FORCE MAJEURE, (ii) MISUSE, FAULT OR NEGLIGENCE OF OR BY BUYER, (iii) USE OF THE PRODUCTS IN A MANNER FOR WHICH THEY WERE NOT DESIGNED, OR (iv) IMPROPER STORAGE AND HANDLING OF THE PRODUCTS. Unless otherwise expressly stated on the Product or in the documentation accompanying the Product, the Product is intended for research only and is not to be used for any other purpose, including without limitation, unauthorized commercial uses, in vitro diagnostic uses, ex vivo or in vivo therapeutic uses, or any type of consumption by or application to human or animals.