

# CD49e (Integrin alpha 5) Monoclonal Antibody (eBioSAM-1 (SAM-1, SAM1)), Biotin, eBioscience™

Product Details	
Size	25 µg
Species Reactivity	Human
Published Species	Human
Host/Isotype	Mouse / IgG2b
Recommended Isotype Control	Mouse IgG2b kappa Isotype Control (eBMG2b), Biotin, eBioscience™
Class	Monoclonal
Type	Antibody
Clone	eBioSAM-1 (SAM-1, SAM1)
Conjugate	Biotin
Form	Liquid
Concentration	0.5 mg/mL
Purification	Affinity chromatography
Storage buffer	PBS, pH 7.2
Contains	0.09% sodium azide
Storage conditions	4° C, store in dark, DO NOT FREEZE!
RRID	AB_763503

Applications	Tested Dilution	Publications
Flow Cytometry (Flow)	0.5 µg/test	2 Publications

## Product Specific Information

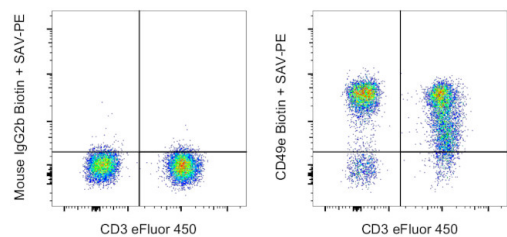
**Description:** The eBioSAM-1 monoclonal antibody reacts with human integrin alpha 5, also known as fibronectin receptor alpha chain, very late activation antigen 5 alpha, and CD49e. Integrins are composed of an alpha chain and a beta chain, which non-covalently associate to form the functional integrin. Integrin heterodimers participate in cell surface-mediated signaling and adhesion functions. Integrin alpha 5 undergoes post-translational cleavage in its extracellular domain to yield disulfide linked light and heavy chains that join with Integrin beta 1 (CD29) to form the fibronectin receptor, also known as the very late activation antigen-5 (VLA-5) complex. Integrin alpha 5 is expressed on thymocytes, T cells, monocytes, platelets, early B cells, and activated B cells.

**Applications Reported:** This eBioSAM-1 (SAM-1, SAM1) antibody has been reported for use in flow cytometric analysis.

**Applications Tested:** This eBioSAM-1 (SAM-1, SAM1) antibody has been tested by flow cytometric analysis of normal human peripheral blood cells. This can be used at less than or equal to 0.5 µg per test. A test is defined as the amount (µg) of antibody that will stain a cell sample in a final volume of 100 µL. Cell number should be determined empirically but can range from 10<sup>5</sup> to 10<sup>8</sup> cells/test. It is recommended that the antibody be carefully titrated for optimal performance in the assay of interest.

**Filtration:** 0.2 µm post-manufacturing filtered.

Product Images For CD49e (Integrin alpha 5) Monoclonal Antibody (eBioSAM-1 (SAM-1, SAM1)), Biotin, eBioscience™



**CD49e (Integrin alpha 5) Antibody (13-0496-80) in Flow**  
Normal human peripheral blood cells were stained with CD3 Monoclonal Antibody, eFluor 450 (Product # 48-0038-42) and Mouse IgG2b kappa Isotype Control, Biotin (Product # 13-4732-85) (left) or CD49e Monoclonal Antibody, Biotin (right) followed by Streptavidin PE (Product # 12-4317-87). Cells in the lymphocyte gate were used for analysis.

2 References

Flow Cytometry (2)

<p><b>Journal of extracellular vesicles</b></p> <p><b>Label-free characterization of an extracellular vesicle-based therapeutic.</b></p> <p>"13-0496-80 was used in Flow Cytometry to provide a robust multi-marker approach to the characterization of clinically approved EV therapeutics and opens the door to improved quality control."</p> <p>Authors: Priglinger E,Strasser J,Buchroithner B,Weber F,Wolbank S,Auer D,Grasmann E,Arzt C,Sivun D,Grillari J, Jacak J,Preiner J,Gimona M</p>	<p><b>Year</b> 2021</p> <p><b>Species</b> Human</p>
<p><b>FEBS letters</b></p> <p><b>Human SND2 mediates ER targeting of GPI-anchored proteins with low hydrophobic GPI attachment signals.</b></p> <p>"Published figure using CD49e (Integrin alpha 5) monoclonal antibody (Product # 13-0496-80) in Flow Cytometry"</p> <p>Authors: Yang J,Hirata T,Liu YS,Guo XY,Gao XD,Kinoshita T,Fujita M</p>	<p><b>Year</b> 2021</p>

For Research Use Only. Not for use in diagnostic procedures. Not for resale without express authorization. Products are warranted to operate or perform substantially in conformance with published Product specifications in effect at the time of sale, as set forth in the Production documentation, specifications and/or accompanying package inserts ("Documentation"). No claim of suitability for use in applications regulated by FDA is made. The warranty provided herein is valid only when used by properly trained individuals. Unless otherwise stated in the Documentation, this warranty is limited to one year from date of shipment when the Product is subjected to normal, proper and intended usage. This warranty does not extend to anyone other than the Buyer. Any model or sample furnished to Buyer is merely illustrative of the general type and quality of goods and does not represent that any Product will conform to such model or sample. NO OTHER WARRANTIES, EXPRESS OR IMPLIED, ARE GRANTED INCLUDING WITHOUT LIMITATION, IMPLIED WARRANTIES OF MERCHANTABILITY, FITNESS FOR ANY PARTICULAR PURPOSE, OR NON-INFRINGEMENT. BUYER'S EXCLUSIVE REMEDY FOR NON-CONFORMING PRODUCTS DURING THE WARRANTY PERIOD IS LIMITED TO REPAIR, REPLACEMENT OF OR REFUND FOR THE NON-CONFORMING PRODUCT(S) AT SELLER'S SOLE OPTION. THERE IS NO OBLIGATION TO REPAIR, REPLACE OR REFUND FOR PRODUCTS AS THE RESULT OF (i) ACCIDENT, DISASTER OR EVENT OF FORCE MAJEURE, (ii) MISUSE, FAULT OR NEGLIGENCE OF OR BY BUYER, (iii) USE OF THE PRODUCTS IN A MANNER FOR WHICH THEY WERE NOT DESIGNED, OR (iv) IMPROPER STORAGE AND HANDLING OF THE PRODUCTS. Unless otherwise expressly stated on the Product or in the documentation accompanying the Product, the Product is intended for research only and is not to be used for any other purpose, including without limitation, unauthorized commercial uses, in vitro diagnostic uses, ex vivo or in vivo therapeutic uses, or any type of consumption by or application to human or animals.