

FGFR1 Monoclonal Antibody (VBS-7)

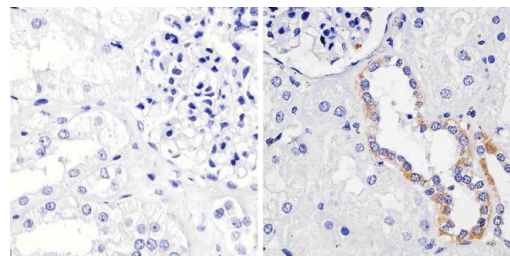
Product Details	
Size	100 µg
Species Reactivity	Bovine, Chicken, Guinea pig, Human, Mouse, Rat
Published Species	Rabbit, Human
Host/Isotype	Mouse / IgG1
Class	Monoclonal
Type	Antibody
Clone	VBS-7
Conjugate	Unconjugated
Immunogen	Bovine FGF Receptor 1 (flg) purified from bovine Coronary Venular Endothelial Cells (CVEC).
Form	Liquid
Concentration	0.5 mg/mL
Purification	purified
Storage buffer	PBS
Contains	0.1% sodium azide
Storage conditions	-20°C
RRID	AB_2533011

Applications	Tested Dilution	Publications
Western Blot (WB)	2 µg/mL	2 Publications
Immunohistochemistry (IHC)	-	1 Publication
Immunohistochemistry (Paraffin) (IHC (P))	1:20-1:200	-
Immunocytochemistry (ICC/IF)	-	1 Publication
Flow Cytometry (Flow)	-	1 Publication
ELISA (ELISA)	0.1-1.0 µg/mL	-
Immunoprecipitation (IP)	2-5 µg	-

Product Images For FGFR1 Monoclonal Antibody (VBS-7)

FGFR1 Antibody (13-3100) in IHC (P)

Immunohistochemistry analysis of FGFR1/CD331 showing staining in the cytoplasm and membrane of paraffin-embedded human kidney tissue (right) compared to a negative control without primary antibody (left). To expose target proteins, antigen retrieval was performed using 10mM sodium citrate (pH 6.0), microwaved for 8-15 min. Following antigen retrieval, tissues were blocked in 3% H2O2-methanol for 15 min at room temperature, washed with ddH2O and PBS, and then probed with a FGFR1/CD331 monoclonal antibody (Product # 13-3100) diluted in 3% BSA-PBS at a dilution of 1:100 overnight at 4°C in a humidified chamber. Tissues were washed extensively in PBST and detection was performed using an HRP-conjugated secondary antibody followed by colorimetric detection using a DAB kit. Tissues were counterstained with hematoxylin and dehydrated with ethanol and xylene to prep for mounting.



Western Blot (2)

<p>PloS one</p> <p>A quantitative proteomic analysis uncovers the relevance of CUL3 in bladder cancer aggressiveness.</p> <p>"13-3100 was used in Western Blotting to perform a proteomic analysis comparing an invasive T24 and an aggressive metastatic derived T24T bladder cancer cell line."</p> <p>Authors: Grau L,Luque-Garcia JL,González-Peramato P,Theodorescu D,Palou J,Fernandez-Gomez JM,Sánchez-Carbayo M</p>	<p>Year 2013</p> <p>Species Human</p> <p>Dilution 1:100</p>
<p>Clinical & experimental metastasis</p> <p>L1CAM stimulates glioma cell motility and proliferation through the fibroblast growth factor receptor.</p> <p>"13-3100 was used in western blot to elucidate the relationship between LCAM cell adhesion/recognition molecule and fibroblast growth factor receptor in high-grade glioma cells."</p> <p>Authors: Mohanan V,Temburni MK,Kappes JC,Galileo DS</p>	<p>Year 2013</p> <p>Species Human</p>

Immunohistochemistry (1)

<p>Clinical orthopaedics and related research</p> <p>Fibroblast growth factor and epidermal growth factor receptors in ligament healing.</p> <p>Authors: Panossian V,Liu SH,Lane JM,Finerman GA</p>	<p>Year 1997</p> <p>Species Rabbit</p>
---	--

Immunocytochemistry (1)

<p>The Journal of experimental medicine</p> <p>Acidic fibroblast growth factor underlies microenvironmental regulation of MYC in pancreatic cancer.</p> <p>"Published figure using FGFR1 monoclonal antibody (Product # 13-3100) in Immunocytochemistry"</p> <p>Authors: Bhattacharyya S,Oon C,Kothari A,Horton W,Link J,Sears RC,Sherman MH</p>	<p>Year 2020</p> <p>Species Human</p>
--	---

More applications with references on thermofisher.cn

Flow (1)

For Research Use Only. Not for use in diagnostic procedures. Not for resale without express authorization. Products are warranted to operate or perform substantially in conformance with published Product specifications in effect at the time of sale, as set forth in the Production documentation, specifications and/or accompanying package inserts ("Documentation"). No claim of suitability for use in applications regulated by FDA is made. The warranty provided herein is valid only when used by properly trained individuals. Unless otherwise stated in the Documentation, this warranty is limited to one year from date of shipment when the Product is subjected to normal, proper and intended usage. This warranty does not extend to anyone other than the Buyer. Any model or sample furnished to Buyer is merely illustrative of the general type and quality of goods and does not represent that any Product will conform to such model or sample. NO OTHER WARRANTIES, EXPRESS OR IMPLIED, ARE GRANTED INCLUDING WITHOUT LIMITATION, IMPLIED WARRANTIES OF MERCHANTABILITY, FITNESS FOR ANY PARTICULAR PURPOSE, OR NON INFRINGEMENT. BUYER'S EXCLUSIVE REMEDY FOR NON-CONFORMING PRODUCTS DURING THE WARRANTY PERIOD IS LIMITED TO REPAIR, REPLACEMENT OF OR REFUND FOR THE NON-CONFORMING PRODUCT(S) AT SELLER'S SOLE OPTION. THERE IS NO OBLIGATION TO REPAIR, REPLACE OR REFUND FOR PRODUCTS AS THE RESULT OF (I) ACCIDENT, DISASTER OR EVENT OF FORCE MAJEURE, (II) MISUSE, FAULT OR NEGLIGENCE OF OR BY BUYER, (III) USE OF THE PRODUCTS IN A MANNER FOR WHICH THEY WERE NOT DESIGNED, OR (IV) IMPROPER STORAGE AND HANDLING OF THE PRODUCTS. Unless otherwise expressly stated on the Product or in the documentation accompanying the Product, the Product is intended for research only and is not to be used for any other purpose, including without limitation, unauthorized commercial uses, in vitro diagnostic uses, ex vivo or in vivo therapeutic uses, or any type of consumption by or application to human or animals.